



How to change hand
brake cable on **ALFA
ROMEO GTV (916C_)** –
replacement guide

SIMILAR VIDEO TUTORIAL



This video shows the replacement procedure of a similar car part on another vehicle

Important!

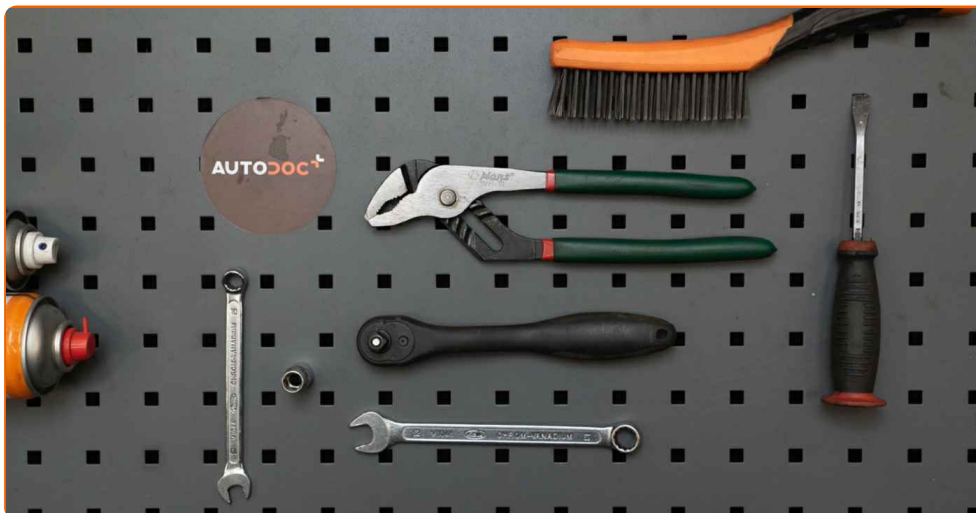
This replacement procedure can be used for:

ALFA ROMEO GTV (916C_) 2.0 T.SPARK 16V, ALFA ROMEO GTV (916C_) 3.0 V6 24V,
ALFA ROMEO GTV (916C_) 1.8 16V, ALFA ROMEO GTV (916C_) 2.0 JTS, ALFA
ROMEO GTV (916C_) 3.2 V6 24V

The steps may slightly vary depending on the car design.

This tutorial was created based on the replacement procedure for a similar car part on: ALFA ROMEO 147 (937) 1.6 16V T.SPARK

REPLACEMENT: HAND BRAKE CABLE – ALFA ROMEO GTV (916C_). LIST OF THE TOOLS YOU'LL NEED:



- Wire brush
- WD-40 spray
- All-purpose cleaning spray
- Torque wrench
- Combination spanner #10
- Combination spanner #13
- Drive socket # 10
- Hammer
- Water pump pliers
- Crow bar
- Wheel chock

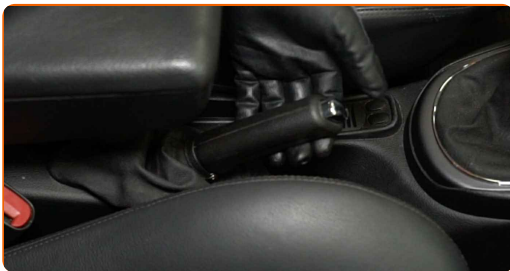
Buy tools

Replacement: hand brake cable – ALFA ROMEO GTV (916C_). AUTODOC recommends:

- Replace the parking brake cables in pairs.
- Please note: all work on the car – ALFA ROMEO GTV (916C_) – should be done with the engine switched off.

CARRY OUT REPLACEMENT IN THE FOLLOWING ORDER:

1 Press the parking brake actuator lever on the brake caliper.



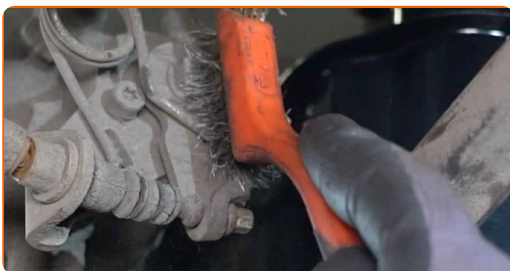
2 Loosen the parking brake cable. Use a combination spanner #13.



3 Secure the wheels with chocks.

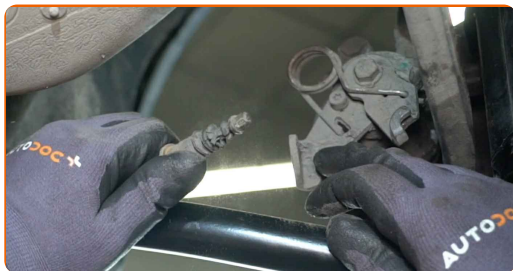
4 Raise the rear of the car and secure on supports.

5 Clean the fastener of the parking brake cable. Use a wire brush. Use all-purpose cleaning spray.



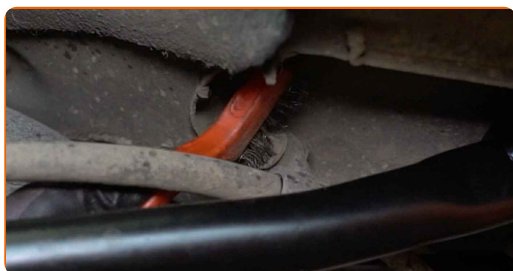
6

Disconnect the parking brake cable from the brake caliper. Use a crowbar. Use water pump pliers.



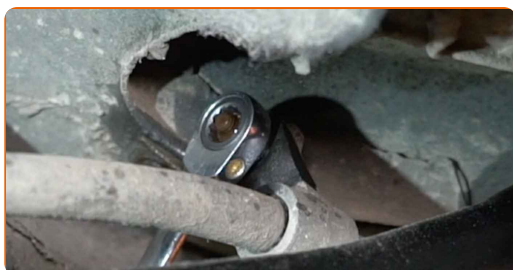
7

Clean the fastener of the parking brake cable. Use a wire brush. Use WD-40 spray.



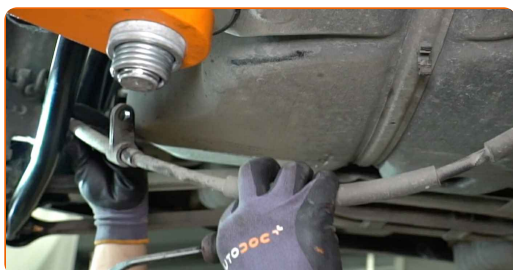
8

Unscrew the parking brake cable fastener. Use a combination spanner #10.

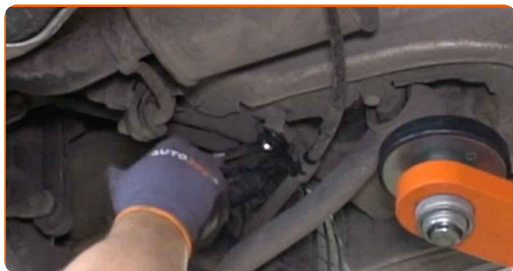


9

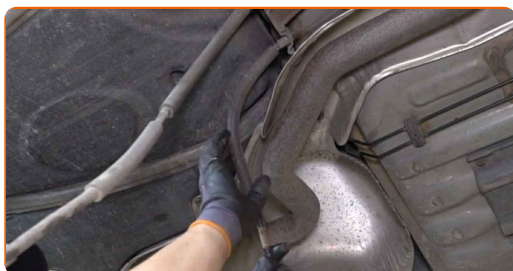
Detach the parking brake cable from the car body. Use a crowbar.



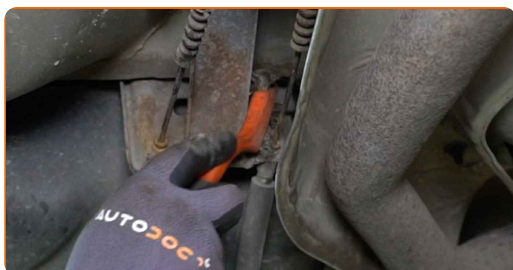
10 Unscrew the parking brake cable fastener. Use a combination spanner #10.



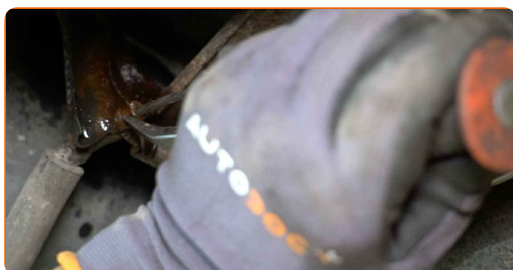
11 Detach the parking brake cable from the car body. Use a crowbar.



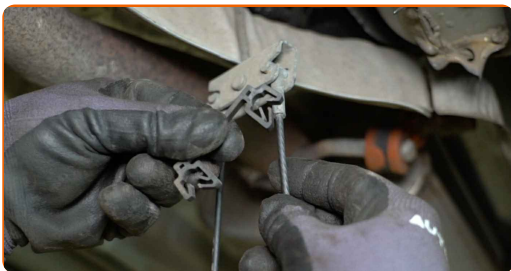
12 Clean the fastener of the parking brake cable. Use a wire brush. Use WD-40 spray.



13 Remove the retaining clip of the parking brake cable. Use a crowbar. Use a hammer.

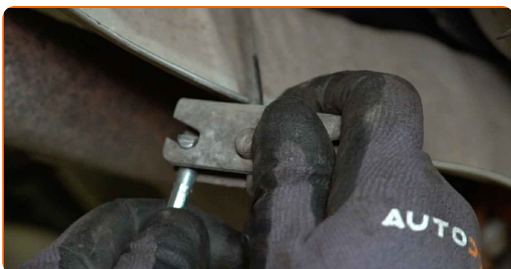


14 Release the parking brake cable.

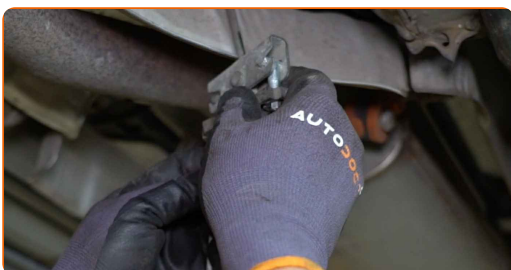


15 Remove the parking brake cable.

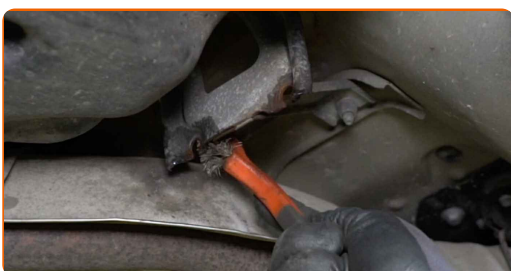
16 Install a new parking brake cable.



17 Secure the parking brake cable.

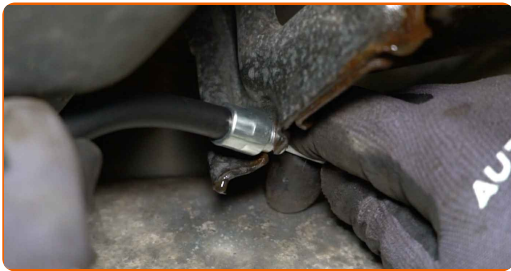


18 Clean the parking brake cable mounting seats. Use a wire brush. Use WD-40 spray.



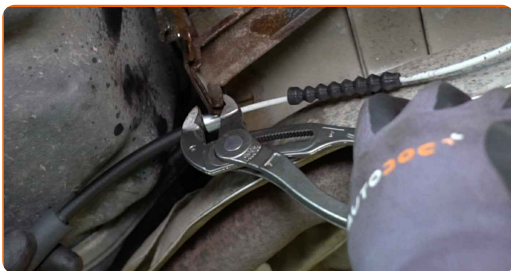
19

Attach the parking brake cable to the parking brake mechanism.



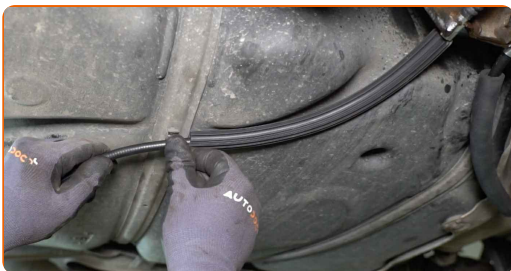
20

Secure the parking brake cable with the retaining clip. Use water pump pliers.



21

Attach the parking brake cable to the car body.



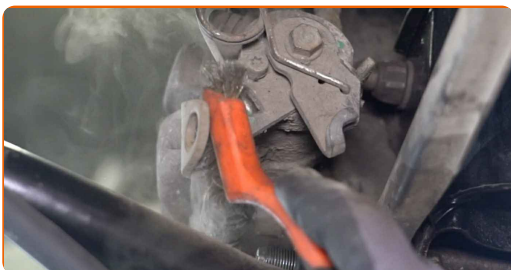
22

Screw in the parking brake cable fastener. Use a drive socket #10. Use a torque wrench. Tighten it to 6 Nm torque.

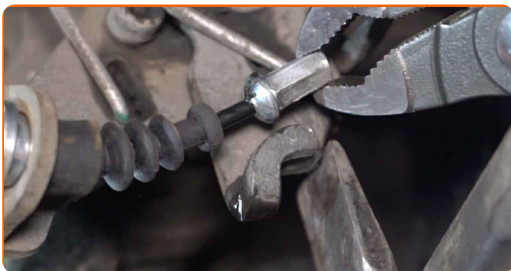


23

Clean the fastener of the parking brake cable. Use a wire brush. Use all-purpose cleaning spray.



24 Install the parking brake cable into the brake caliper bracket. Use a crowbar. Use water pump pliers.



25 Lower the car.

26 Remove the jacks and chocks.

27 Adjust the parking brake cable tension. Use a combination spanner #13.



28 Engage the parking brake lever.



WELL DONE! 

VIEW MORE TUTORIALS

AUTODOC – TOP QUALITY AND AFFORDABLE CAR PARTS ONLINE

AUTODOC MOBILE APP: GREAT DEALS AND CONVENIENT SHOPPING



+ AUTODOC

GET IT ON
Google Play

 Download on the
App Store

Download

A GREAT SELECTION OF SPARE PARTS FOR YOUR CAR

HAND BRAKE CABLE: A WIDE SELECTION

DISCLAIMER:

The document contains only general recommendations that may be useful for you when you perform repair or replacement work. AUTODOC shall not be liable for any loss, injury, damage of property occurring in the repair or replacement process due to incorrect use or misinterpretation of the provided information.

AUTODOC shall not be liable for any possible mistakes and uncertainties in this guide. The information provided is for information purposes only and cannot replace advice from specialists.

AUTODOC shall not be liable for incorrect or hazardous usage of equipment, tools and car parts. AUTODOC strongly recommends to be careful and observe the safety rules when performing repair or replacement works. Remember: usage of low quality auto parts does not guarantee you the appropriate level of road safety.

© Copyright 2023 – All the contents of this website, in particular texts, photographs and graphics, are protected by copyright. All rights, including reproduction, publication, editing and translation rights, are reserved by AUTODOC SE.