



How to change rear
lower arm on **ALFA
ROMEO 156 Sportwagon
(932)** – replacement
guide

SIMILAR VIDEO TUTORIAL



This video shows the replacement procedure of a similar car part on another vehicle

Important!

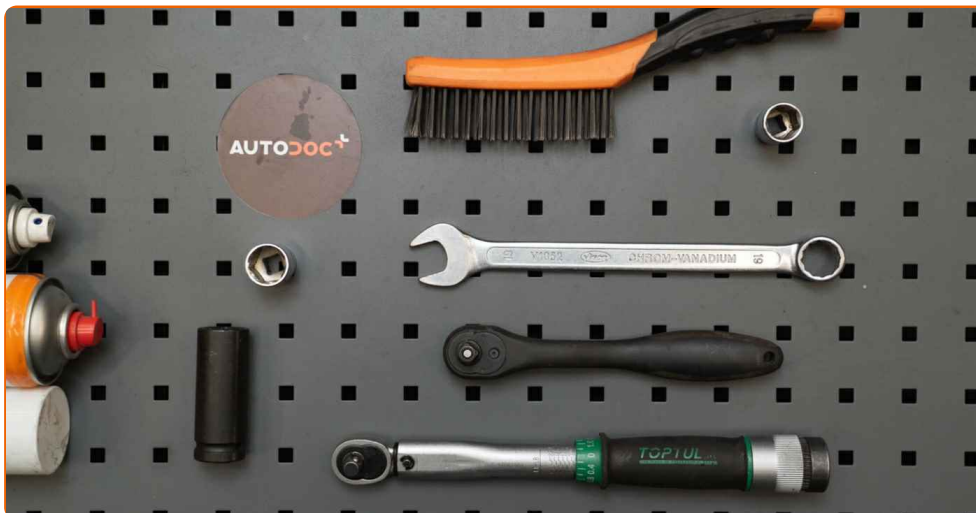
This replacement procedure can be used for:

ALFA ROMEO 156 Sportwagon (932) 1.6 16V T.SPARK., ALFA ROMEO 156 Sportwagon (932) 1.8 16V T.SPARK, ALFA ROMEO 156 Sportwagon (932) 2.0 16V T.SPARK, ALFA ROMEO 156 Sportwagon (932) 2.5 V6 24V, ALFA ROMEO 156 Sportwagon (932) 1.9 JTD, ALFA ROMEO 156 Sportwagon (932) 2.4 JTD, ALFA ROMEO 156 Sportwagon (932) 3.2 GTA, ALFA ROMEO 156 Sportwagon (932) 2.0 JTS, ALFA ROMEO 156 Sportwagon (932) 1.9 JTD 16V, ALFA ROMEO 156 Sportwagon (932) 1.9 JTD 16V Q4, ALFA ROMEO 156 Sportwagon (932) 1.6 16V T.SPARK

The steps may slightly vary depending on the car design.

This tutorial was created based on the replacement procedure for a similar car part on: ALFA ROMEO 147 (937) 1.6 16V T.SPARK

REPLACEMENT: REAR LOWER ARM – ALFA ROMEO 156 SPORTWAGON (932). TOOLS YOU NEED:



- Wire brush
- WD-40 spray
- Brake cleaner
- Copper grease
- Torque wrench
- Combination spanner #19
- Drive socket # 15
- Drive socket # 19
- Wheel impact socket #17
- Ratchet wrench
- Tap wrench
- Hydraulic transmission jack
- Wheel chock

Buy tools

Replacement: rear lower arm – ALFA ROMEO 156 Sportwagon (932).
 AUTODOC experts recommend:

- The replacement procedure is identical for the left and right lower control arms.
- Please note: all work on the car – ALFA ROMEO 156 Sportwagon (932) – should be done with the engine switched off.

CARRY OUT REPLACEMENT IN THE FOLLOWING ORDER:

1 Secure the wheels with chocks.

2 Loosen the wheel mounting bolts. Use wheel impact socket #17.



3 Raise the rear of the car and secure on supports.

4 Unscrew the wheel bolts.



AUTODOC recommends:

- Warning! To avoid injury, hold the wheel while unscrewing the fastening bolts.
ALFA ROMEO 156 Sportwagon (932)

5

Remove the wheel.



6

Clean all joints of the arm. Use a wire brush. Use WD-40 spray.



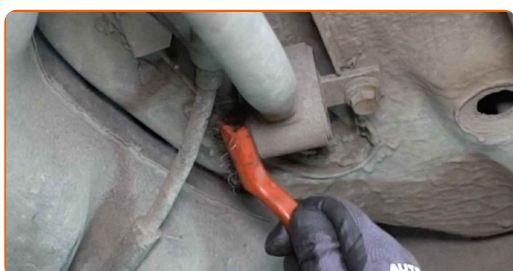
AUTODOC recommends:

- Replacement: rear lower arm – ALFA ROMEO 156 Sportwagon (932). After applying the spray, wait a few minutes.
- Wear protective goggles.
- Wear a respirator.

- 7** Unscrew the fastener connecting the control arm to the rear knuckle. Use a combination spanner #19. Use a drive socket #19. Use a tap wrench.



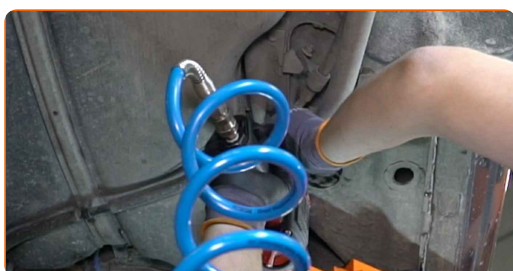
- 8** Clean all joints of the arm. Use a wire brush. Use WD-40 spray.



Replacement: rear lower arm – ALFA ROMEO 156 Sportwagon (932).
Professionals recommend:

- After applying the spray, wait a few minutes.
- Wear protective goggles.
- Wear a respirator.

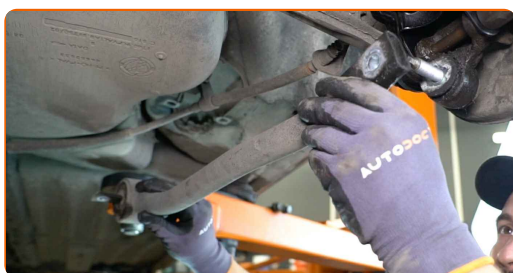
- 9** Unscrew the rear fastener connecting the control arm to the car body. Use a drive socket #15. Use a ratchet wrench.



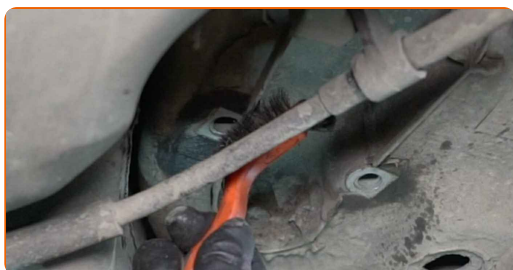
10 Remove the fastening bolts.



11 Remove the arm.



12 Clean the mounting seats and the thread of the suspension arm. Use a wire brush. Use WD-40 spray.



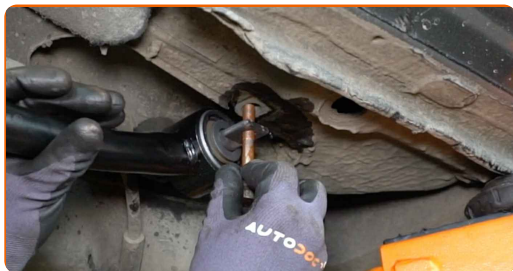
13 Install a new arm.



Replacement: rear lower arm – ALFA ROMEO 156 Sportwagon (932). Tip from AUTODOC experts:

- During the installation process, use only new bolts and nuts.

14 Install the fastening bolts.



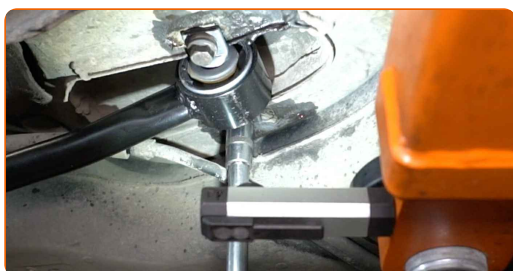
15 Screw the rear fastener connecting the control arm to the car body. Use a drive socket #15. Use a ratchet wrench.



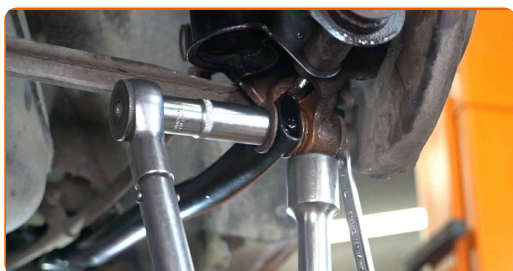
16 Support the arm. Use a hydraulic transmission jack.



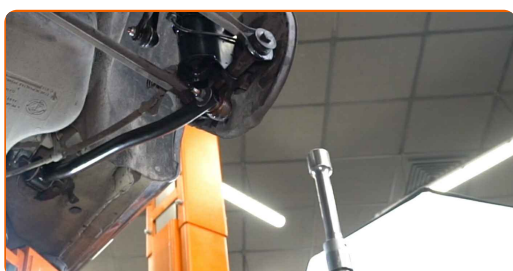
17 Tighten the rear fastener connecting the arm to the car body. Use a drive socket #15. Use a torque wrench. Tighten it to 68 nm torque.



- 18** Tighten the fastener connecting the control arm to the rear knuckle. Use a combination spanner #19. Use a drive socket #19. Use a torque wrench. Tighten it to 110 Nm torque.



- 19** Remove the support from under the arm.



AUTODOC recommends:

- Replacement: rear lower arm – ALFA ROMEO 156 Sportwagon (932). Lower the transmission jack smoothly, without jerks, to avoid damaging components and mechanisms.

- 20** Treat all joints of the arm. Use copper grease.



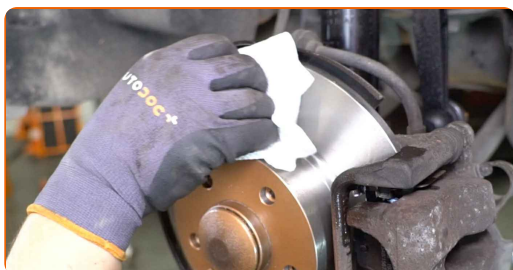
21 Clean the wheel rim mounting seat. Use a wire brush.



22 Treat the surface where the brake disc contacts the wheel rim. Use copper grease.



23 Clean the brake disk surface. Use a brake cleaner.



AUTODOC recommends:

- Replacement: rear lower arm – ALFA ROMEO 156 Sportwagon (932). After applying the spray, wait a few minutes.

24 Install the wheel.



AUTODOC recommends:

- Important! Hold the wheel while screwing in the fastening bolts. ALFA ROMEO 156 Sportwagon (932)

25

Screw in the wheel bolts. Use wheel impact socket #17.



26

Lower the car and working in a cross order, tighten the wheel bolts. Use wheel impact socket #17. Use a torque wrench. Tighten it to 108 Nm torque.



27

Remove the jacks and chocks.



WELL DONE! 

[VIEW MORE TUTORIALS](#)

AUTODOC – TOP QUALITY AND AFFORDABLE CAR PARTS ONLINE

AUTODOC MOBILE APP: GREAT DEALS AND CONVENIENT SHOPPING



+ AUTODOC

GET IT ON
 **Google Play**

Download on the
 **App Store**

Download

A GREAT SELECTION OF SPARE PARTS FOR YOUR CAR

CONTROL ARM: A WIDE SELECTION

DISCLAIMER:

The document contains only general recommendations that may be useful for you when you perform repair or replacement work. AUTODOC shall not be liable for any loss, injury, damage of property occurring in the repair or replacement process due to incorrect use or misinterpretation of the provided information.

AUTODOC shall not be liable for any possible mistakes and uncertainties in this guide. The information provided is for information purposes only and cannot replace advice from specialists.

AUTODOC shall not be liable for incorrect or hazardous usage of equipment, tools and car parts. AUTODOC strongly recommends to be careful and observe the safety rules when performing repair or replacement works. Remember: usage of low quality auto parts does not guarantee you the appropriate level of road safety.

© Copyright 2022 – All the contents of this website, in particular texts, photographs and graphics, are protected by copyright. All rights, including reproduction, publication, editing and translation rights, are reserved by AUTODOC GmbH.