



How to change rear strut  
mount on **ALFA ROMEO**  
**156 Sportwagon (932)** –  
replacement guide

### SIMILAR VIDEO TUTORIAL



This video shows the replacement procedure of a similar car part on another vehicle

#### **i Important!**

This replacement procedure can be used for:

ALFA ROMEO 156 Sportwagon (932) 1.6 16V T.SPARK., ALFA ROMEO 156 Sportwagon (932) 1.8 16V T.SPARK, ALFA ROMEO 156 Sportwagon (932) 2.0 16V T.SPARK, ALFA ROMEO 156 Sportwagon (932) 2.5 V6 24V, ALFA ROMEO 156 Sportwagon (932) 1.9 JTD, ALFA ROMEO 156 Sportwagon (932) 2.4 JTD, ALFA ROMEO 156 Sportwagon (932) 3.2 GTA, ALFA ROMEO 156 Sportwagon (932) 2.0 JTS, ALFA ROMEO 156 Sportwagon (932) 1.9 JTD 16V, ALFA ROMEO 156 Sportwagon (932) 1.9 JTD 16V Q4, ALFA ROMEO 156 Sportwagon (932) 1.6 16V T.SPARK

The steps may slightly vary depending on the car design.

This tutorial was created based on the replacement procedure for a similar car part on: ALFA ROMEO 147 (937) 1.6 16V T.SPARK

**REPLACEMENT: STRUT MOUNT – ALFA ROMEO 156 SPORTWAGON (932). TOOLS YOU MIGHT NEED:**



- Wire brush
- WD-40 spray
- Brake cleaner
- Copper grease
- Torque wrench
- Combination spanner #17
- Combination spanner #19
- Drive socket # 17
- Drive socket # 19
- Drive socket # 22
- HEX bit No.H5
- HEX bit No.H6
- Wheel impact socket #17
- Ratchet wrench
- Phillips screwdriver
- Plastic trim tool
- Crow bar
- Hydraulic strut spring compressor
- Hydraulic transmission jack
- Wheel chock

**Buy tools**

Replacement: strut mount – ALFA ROMEO 156 Sportwagon (932). Tip from AUTODOC:

- The replacement procedure is identical for the mounts of the left and right shock struts of the rear suspension.
- All mounts of the rear shock struts should be replaced simultaneously.
- Please note: all work on the car – ALFA ROMEO 156 Sportwagon (932) – should be done with the engine switched off.

**CARRY OUT REPLACEMENT IN THE FOLLOWING ORDER:**

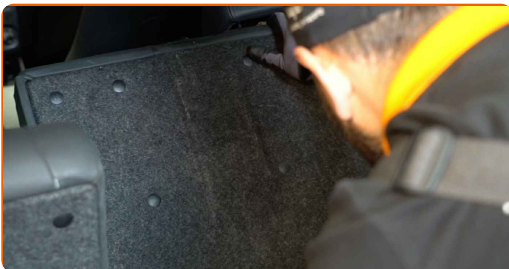
**1** Secure the wheels with chocks.

**2** Open the boot lid.

**3** Move the folding shelf and detach it from the retainers. By doing this, you will get access to the side trim plastic panels.



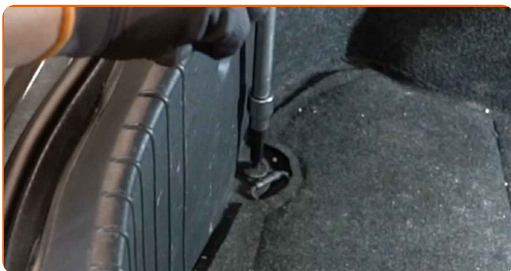
**4** Remove the rear seat backrest.



**5** Unscrew the fastener of the central protective plastic panel. Use a Phillips screwdriver.



**6** Loosen the hooks that secure the boot lining. Use HEX No.H5. Use a ratchet wrench.



**7** Remove the central protective plastic panel.



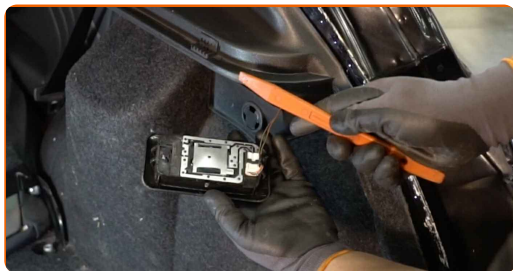
**8** Remove the luggage compartment trim.



**9** Remove the rubber strip.



**10** Remove the interior boot light. Use a plastic trim tool.



**11** Detach the bulb connector.



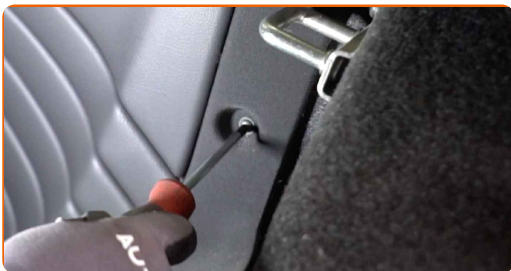
**12** Unscrew the fastener of the boot side lining. Use a Phillips screwdriver.



**13** Detach the boot side lining. Use a plastic trim tool.



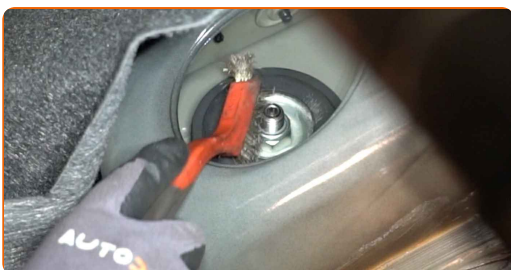
**14** Unscrew the fasteners of the side plastic trim panel. Use a Phillips screwdriver.



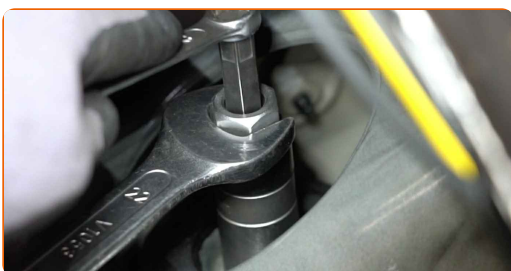
**15** Remove the side plastic cover.



**16** Clean the upper fastener of the suspension strut mount. Use WD-40 spray.



**17** Loosen the upper fastener of the shock strut mount. Use HEX No.H6. Use a drive socket #22. Use a ratchet wrench.



**18** Loosen the wheel mounting bolts. Use wheel impact socket #17.



**19** Raise the rear of the car and secure on supports.

**20** Unscrew the wheel bolts.



**AUTODOC recommends:**

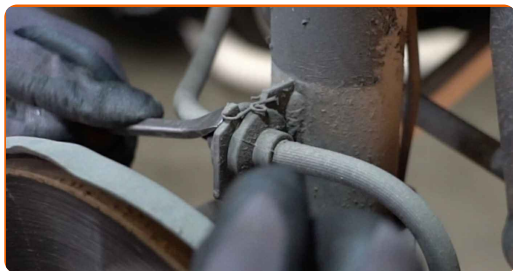
- Warning! To avoid injury, hold the wheel while unscrewing the fastening bolts.  
ALFA ROMEO 156 Sportwagon (932)

**21** Remove the wheel.

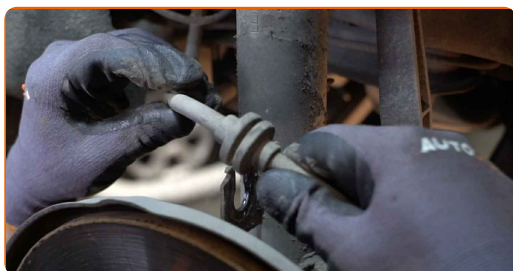




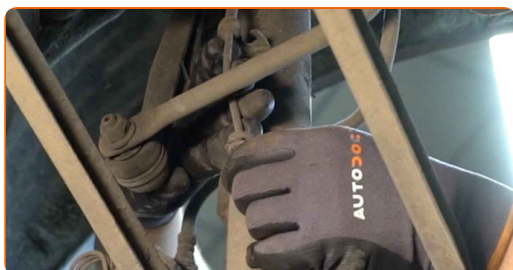
**22** Remove the fastener attaching the brake hose to the shock strut. Use a crowbar.



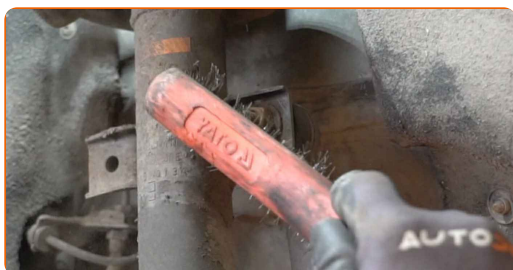
**23** Detach the brake hose from the shock strut.



**24** Disconnect the ABS sensor wiring.



**25** Clean the stabiliser link fasteners. Use a wire brush. Use WD-40 spray.



- 26** Unscrew the fastener connecting the stabilizer link to the shock strut. Use a combination spanner #17. Use HEX No.H5. Use a ratchet wrench.



- 27** Remove the stabiliser link.



- 28** Clean the fastener that connects the suspension strut to the stub axle. Clean the control arm fasteners. Use a wire brush. Use WD-40 spray.



- 29** Unscrew the fastener that connects the suspension strut to the rear knuckle. Use a combination spanner #19. Use a drive socket #19. Use a ratchet wrench.



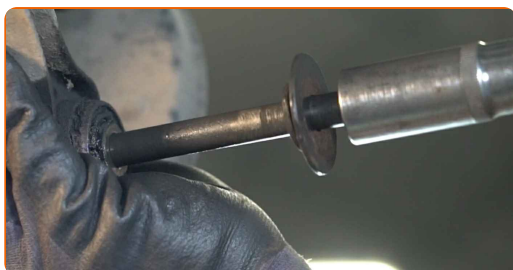
**30** Unscrew the fastener that connects the suspension arm to the stub axle. Use a combination spanner #19.



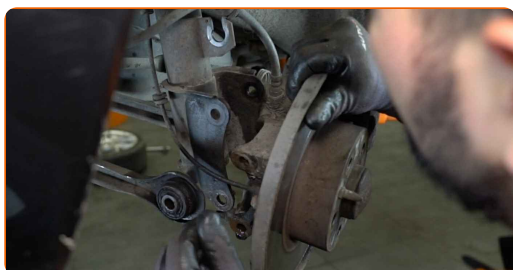
**31** Support the rear knuckle. Use a hydraulic transmission jack.



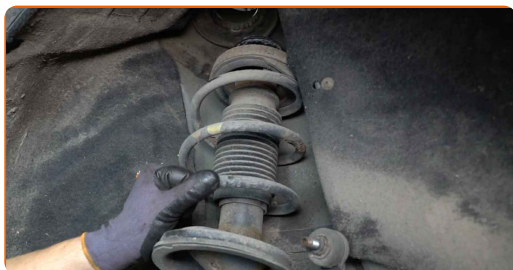
**32** Remove the fastening bolts.



**33** Detach the shock absorber from the rear knuckle.



**34** Remove the assembled shock strut. Use a crowbar.



**35**

Set the shock absorber strut on the spring compressor tool.



**Replacement: strut mount – ALFA ROMEO 156 Sportwagon (932). Tip from AUTODOC:**

- Note that when using a spring compressor, spring coils need to be securely gripped, compressing the spring on the opposite sides.
- Ensure the correct position of the spring in the retainer.
- Make sure that the spring coils tightly entered the lock handles.

**36**

Compress the spring.



**37**

Treat the shock strut rod. Use a wire brush. Use WD-40 spray.



38

Remove the strut piston rod nut. Use a drive socket #22. Use HEX No.H6. Use a ratchet wrench.



39

Remove the top strut mount.



Replacement: strut mount – ALFA ROMEO 156 Sportwagon (932). AUTODOC experts recommend:

- Examine the shock absorber dust cap and the bump stop. Replace them if necessary.

40

Install a new strut mount.



- 41 Tighten the shock strut piston rod nut. Use a drive socket #22. Use HEX No.H6. Use a torque wrench. Tighten it to 65 Nm torque.



Replacement: strut mount – ALFA ROMEO 156 Sportwagon (932). Tip:

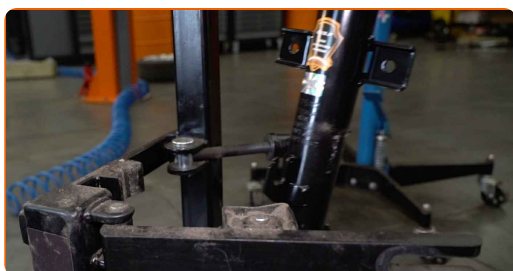
- Check to make sure the spring is positioned correctly. Avoid its misalignment.

- 42 Treat the shock strut rod. Use copper grease.

- 43 Decompress the spring.

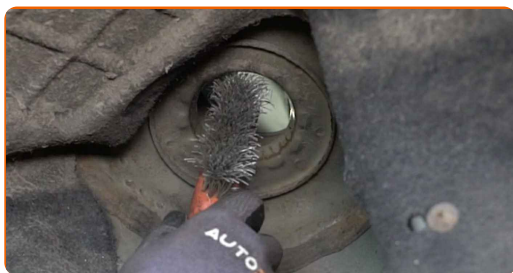


- 44 Remove the assembled shock strut.



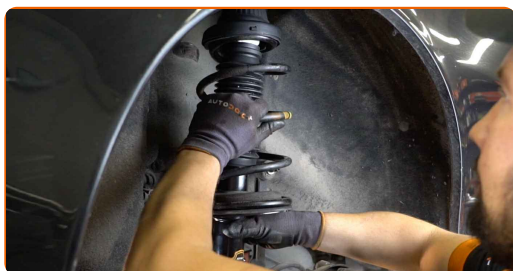
45

Clean the mounting seats of the shock strut. Use a wire brush. Use WD-40 spray.



46

Install the shock strut into the wheel arch.

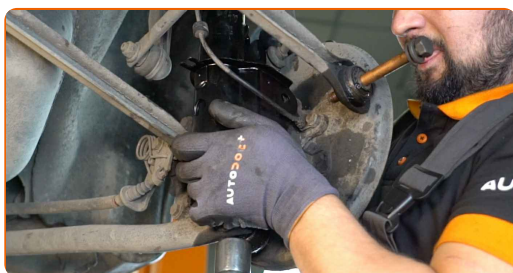


**AUTODOC recommends:**

- ALFA ROMEO 156 Sportwagon (932) – To avoid injury, hold the suspension strut while screwing in the fastening bolts.

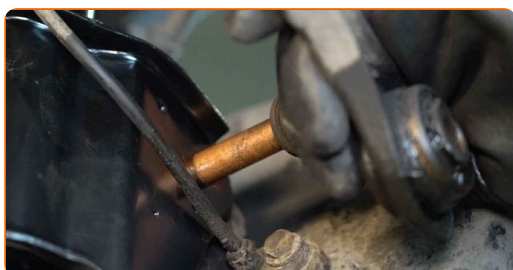
47

Attach the shock absorber to the rear knuckle.



48

Install the fastening bolts.



**49**

Raise the hydraulic transmission jack by 10-15 cm.

**50**

Screw in the fastener that connects the suspension arm to the stub axle. Use a combination spanner #19. Use a drive socket #19. Use a ratchet wrench.



**51**

Screw in the fastener connecting the shock absorber to the rear knuckle. Use a combination spanner #19. Use a drive socket #19. Use a ratchet wrench.



**52**

Tighten the fastener that connects the suspension arm to the stub axle. Use a combination spanner #19. Use a drive socket #19. Use a torque wrench. Tighten it to 115 Nm torque.



**53**

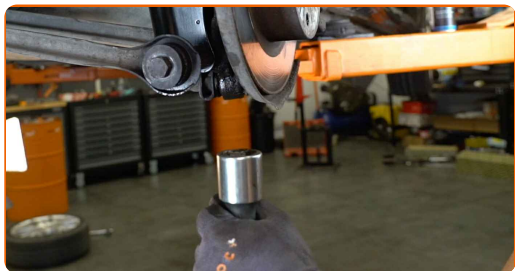
Tighten the fastener that connects the suspension strut to the rear knuckle. Use a combination spanner #19. Use a drive socket #19. Use a torque wrench. Tighten it to 115 Nm torque.





54

Remove the support from under the rear knuckle.

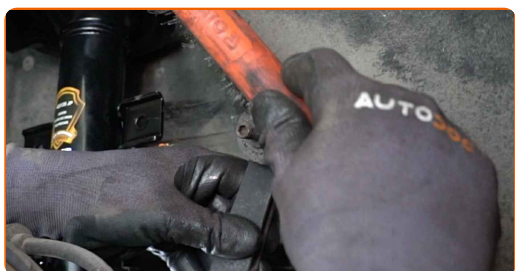


**AUTODOC recommends:**

- ALFA ROMEO 156 Sportwagon (932) – Do not lower the transmission jack sharply to avoid damaging components and mechanisms of the car.

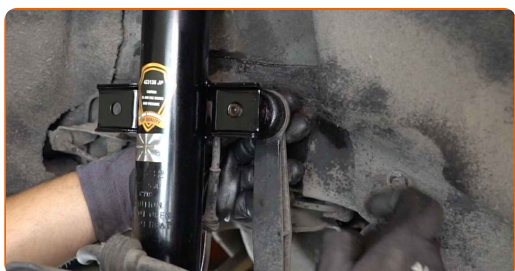
55

Clean the mounting seats of the stabiliser link. Use a wire brush. Use WD-40 spray.



56

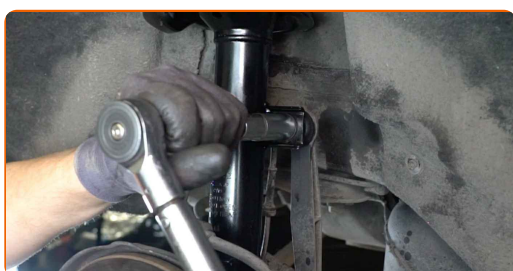
Install the transverse stabilizer link.



**57** Tighten the stabiliser link fastener. Use a combination spanner #17. Use HEX No.H5. Use a ratchet wrench.



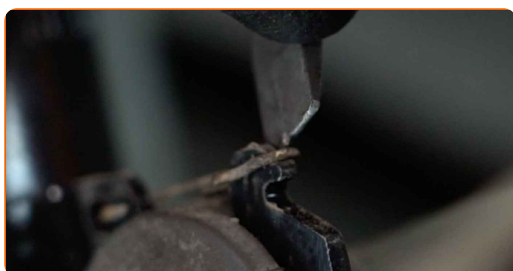
**58** Tighten the fastener connecting the stabilizer link to the shock strut. Use a drive socket #17. Use a torque wrench. Tighten it to 55 Nm torque.



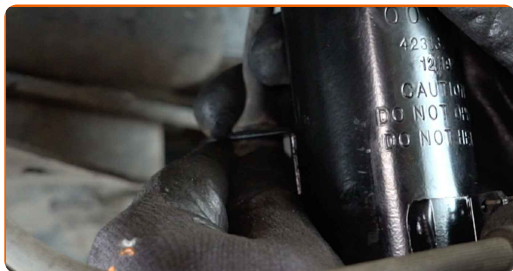
**59** Fasten the brake hose on the strut.



**60** Install the brake hose retaining clip. Use a crowbar.



**61** Connect the ABS sensor wiring.



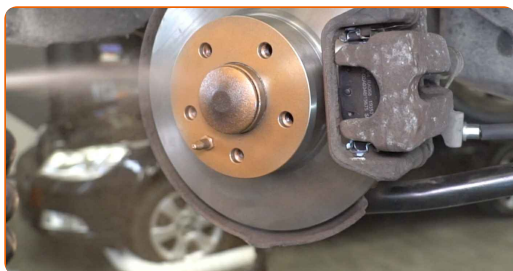
**62** Treat the shock strut fasteners. Treat all joints of the stabiliser link. Treat the rear knuckle fasteners. Use copper grease.



**63** Clean the wheel rim mounting seat. Use a wire brush.



**64** Treat the surface where the brake disc contacts the wheel rim. Use copper grease.



65

Clean the brake disk surface. Use a brake cleaner.



**AUTODOC recommends:**

- Replacement: strut mount – ALFA ROMEO 156 Sportwagon (932). After applying the spray, wait a few minutes.

66

Install the wheel.



**AUTODOC recommends:**

- Warning! To avoid injury, hold the wheel while screwing in the fastening bolts on the car. ALFA ROMEO 156 Sportwagon (932)

67

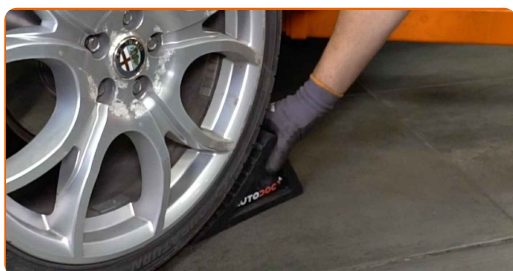
Screw in the wheel bolts. Use wheel impact socket #17.



**68** Lower the car and working in a cross order, tighten the wheel bolts. Use wheel impact socket #17. Use a torque wrench. Tighten it to 108 Nm torque.



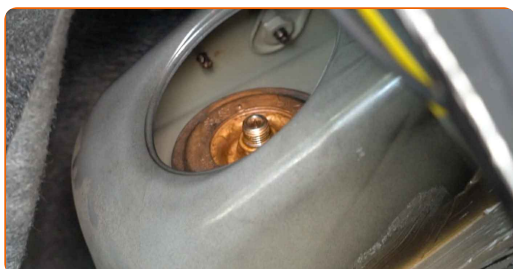
**69** Remove the jacks and chocks.



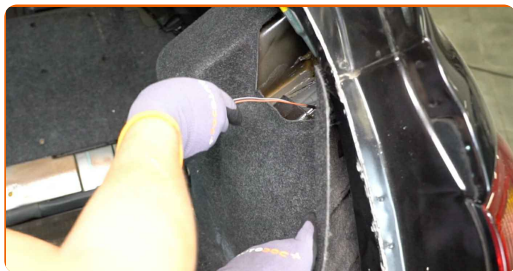
**70** Tighten the upper fastener of the shock absorber strut mount. Use a drive socket #22. Use HEX No.H6. Use a torque wrench. Tighten it to 65 Nm torque.



**71** Treat the upper fastener of the suspension strut mount. Use copper grease.



**72** Attach the side lining of the boot.



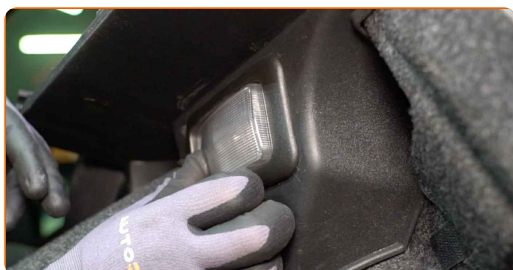
**73** Screw in the fastener of the boot side lining. Use a Phillips screwdriver.



**74** Attach the bulb connector.



**75** Install the interior boot light.



**76** Install the rubber strip.



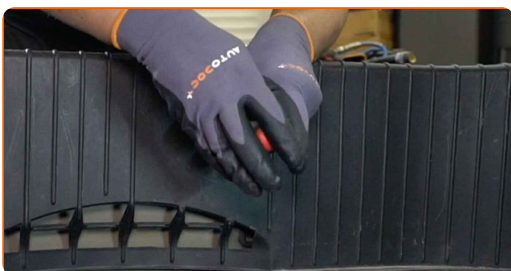
**77** Install the side plastic panel.

**78** Screw the fasteners of the side plastic trim panel. Use a Phillips screwdriver.

**79** Install the central protective plastic panel.



**80** Screw in the fastener of the central protective plastic panel. Use a Phillips screwdriver.



**81** Tighten the hooks that secure the boot lining. Use HEX No.H5. Use a ratchet wrench.

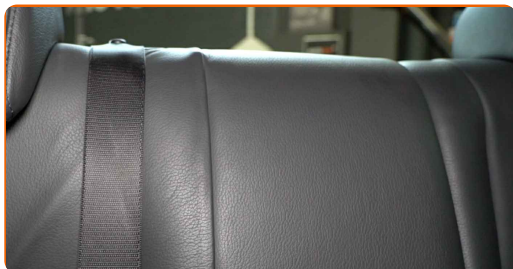


**82** Install the luggage compartment trim.



**83**

Return the seat to its original position.

**84**

Install the folding shelf to its mounting seat.

**85**

Close the lid of the luggage compartment.

**WELL DONE!** [VIEW MORE TUTORIALS](#)



# AUTODOC – TOP QUALITY AND AFFORDABLE CAR PARTS ONLINE

**AUTODOC MOBILE APP: GREAT DEALS AND CONVENIENT SHOPPING**



**+ AUTODOC**

GET IT ON  
 **Google Play**

Download on the  
 **App Store**

**Download**

**A GREAT SELECTION OF SPARE PARTS FOR YOUR CAR**

**STRUT MOUNT: A WIDE SELECTION**

## **DISCLAIMER:**

The document contains only general recommendations that may be useful for you when you perform repair or replacement work. AUTODOC shall not be liable for any loss, injury, damage of property occurring in the repair or replacement process due to incorrect use or misinterpretation of the provided information.

AUTODOC shall not be liable for any possible mistakes and uncertainties in this guide. The information provided is for information purposes only and cannot replace advice from specialists.

AUTODOC shall not be liable for incorrect or hazardous usage of equipment, tools and car parts. AUTODOC strongly recommends to be careful and observe the safety rules when performing repair or replacement works. Remember: usage of low quality auto parts does not guarantee you the appropriate level of road safety.

© Copyright 2022 – All the contents of this website, in particular texts, photographs and graphics, are protected by copyright. All rights, including reproduction, publication, editing and translation rights, are reserved by AUTODOC GmbH.