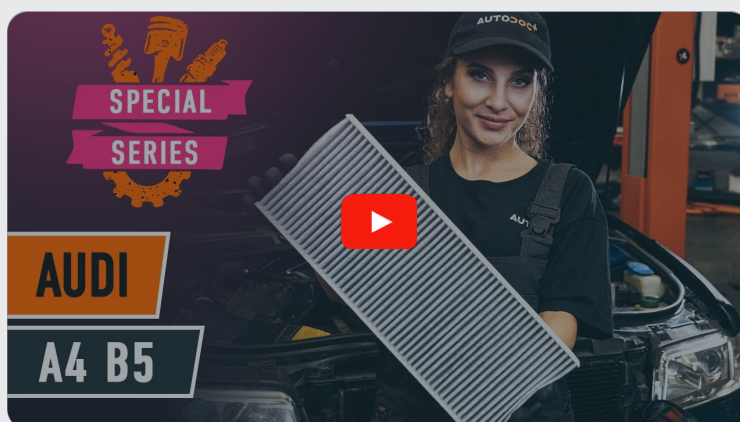




How to change pollen
filter on **Audi A4 B5**
saloon – replacement
guide

VIDEO TUTORIAL



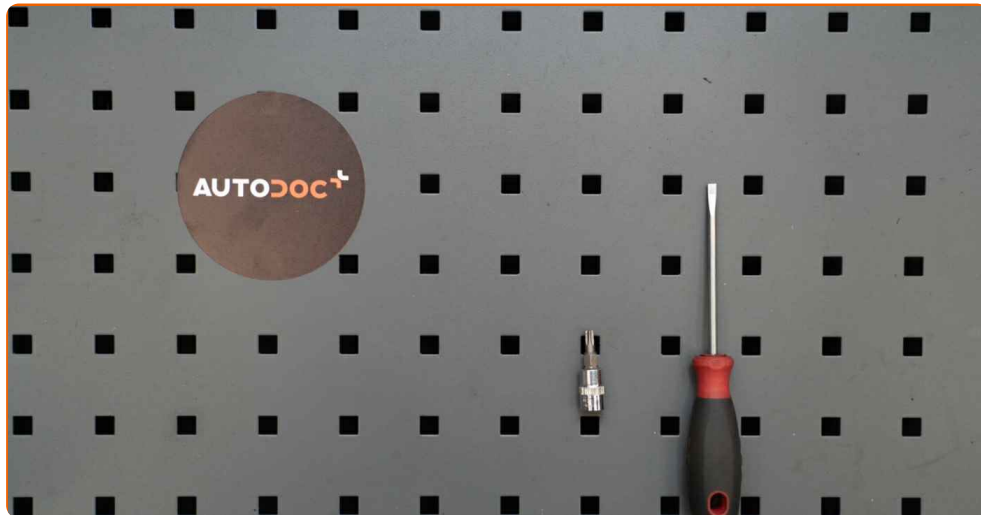
Important!

This replacement procedure can be used for:

AUDI COUPE (89, 8B) 2.3, AUDI COUPE (89, 8B) 2.0, AUDI COUPE (89, 8B) 2.0 16 V, AUDI COUPE (89, 8B) 2.3 20V, AUDI COUPE (89, 8B) 2.6, AUDI COUPE (89, 8B) 2.8, AUDI COUPE (89, 8B) 2.3 quattro, AUDI COUPE (89, 8B) 2.3 20V quattro, AUDI COUPE (89, 8B) S2 quattro, AUDI COUPE (89, 8B) 2.6 quattro, AUDI COUPE (89, 8B) 2.8 quattro, AUDI 80 B4 Saloon (8C2) 1.9 TD, AUDI 80 B4 Saloon (8C2) 1.9 TDI, AUDI 80 B4 Saloon (8C2) 1.6, AUDI 80 B4 Saloon (8C2) 1.6 E, (+ 77)

The steps may slightly vary depending on the car design.

REPLACEMENT: POLLEN FILTER – AUDI A4 B5
SALOON. TOOLS YOU NEED:



- Torx bit T20
- Flat screwdriver
- Fender cover

BUY TOOLS

Replacement: pollen filter – Audi A4 B5 saloon. Tip:

- Replace the cabin filter at least once every six months, in early spring and autumn seasons.
- Follow the terms, recommendations and requirements of the part operation provided by the manufacturer.
- If the air flow into the cabin has sharply reduced, replace the filter before a scheduled maintenance.
- Please note: all work on the car – Audi A4 B5 saloon – should be done with the engine switched off.

CARRY OUT REPLACEMENT IN THE FOLLOWING ORDER:

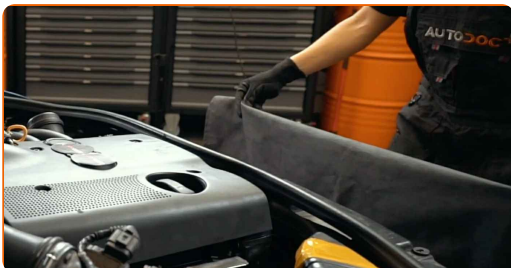
1

Open the hood.

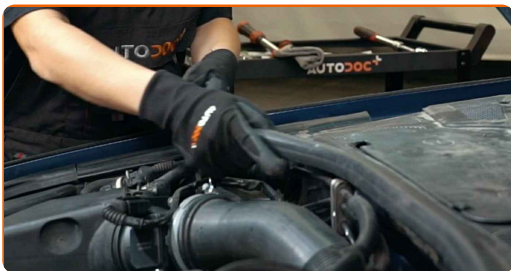


2

Use a fender protection cover to prevent damaging paintwork and plastic parts of the car.



3 Remove the cowl grille seal.



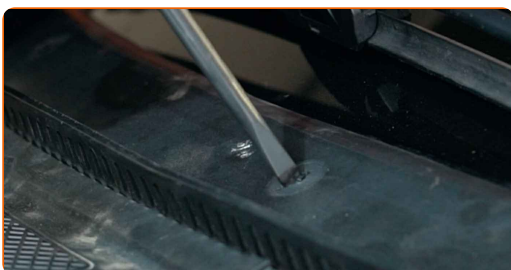
4 Unscrew the fasteners of the cowl grille. Use Torx T20. Use a flat screwdriver.



5 Raise up and remove the cowl grille.



6 Press the pollen filter retaining clips to release them.



7 Remove the cabin filter.



Replacement: pollen filter – Audi A4 B5 saloon. AUTODOC experts recommend:

- Do not attempt to clean and reuse the filter - it will affect the quality of air cleaning inside the car.

8

Switch on the ignition.



9

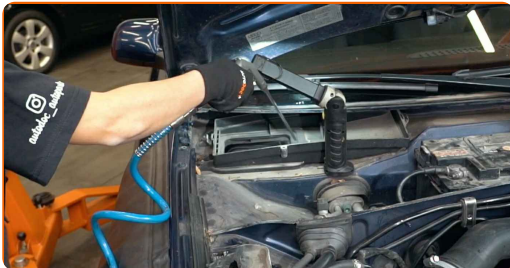
Close the heater flap.

10

Switch off the ignition.

11

Clean the cabin filter housing and cover.

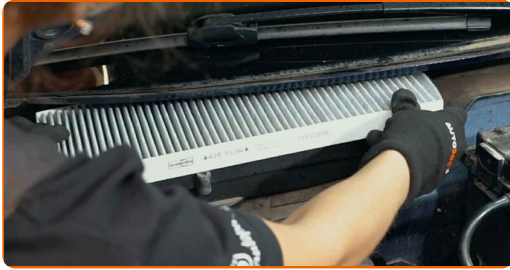


Replacement: pollen filter – Audi A4 B5 saloon. Tip from AUTODOC experts:

- Remove any debris from the cabin filter housing carefully to prevent contamination of the ventilation duct.

12

Install the cabin filter to its mounting seat.



Replacement: pollen filter – Audi A4 B5 saloon. Tip:

- Follow the air flow direction arrow on the filter.
- Check out the correct location of the filter element. Do not skew.
- Attention! Use quality filters – Audi A4 B5 saloon.

13

Lock the pollen filter retaining clips in place.



14

Install and secure the cowl grille. Use Torx T20. Use a flat screwdriver.

15

Install the cowl grille seal.



16 Switch on the ignition. The heater flap will automatically return to its normal position.

17 Switch on the air conditioning system. This is necessary in order to make sure that the component operates properly.

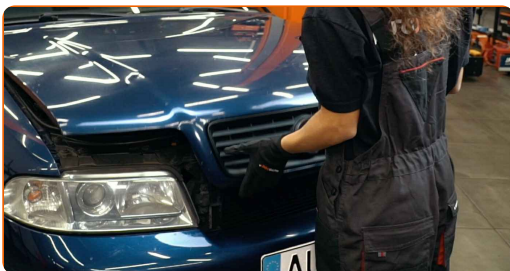


18 Switch off the ignition.

19 Remove the fender protection cover.



20 Close the hood.



WELL DONE! 

VIEW MORE TUTORIALS

AUTODOC – TOP QUALITY AND AFFORDABLE CAR PARTS ONLINE

AUTODOC MOBILE APP: GREAT DEALS AND CONVENIENT SHOPPING



+ AUTODOC

GET IT ON
Google Play

Download on the
App Store

Download

A GREAT SELECTION OF SPARE PARTS FOR YOUR CAR

BUY SPARE PARTS FOR AUDI

POLLEN FILTER: A WIDE SELECTION

CHOOSE CAR PARTS FOR AUDI A4 B5 SALOON

POLLEN FILTER FOR AUDI: BUY NOW

**POLLEN FILTER FOR AUDI A4 B5 SALOON: THE BEST
DEALS & OFFERS**

DISCLAIMER:

The document contains only general recommendations that may be useful for you when you perform repair or replacement work. AUTODOC shall not be liable for any loss, injury, damage of property occurring in the repair or replacement process due to incorrect use or misinterpretation of the provided information.

AUTODOC shall not be liable for any possible mistakes and uncertainties in this guide. The information provided is for information purposes only and cannot replace advice from specialists.

AUTODOC shall not be liable for incorrect or hazardous usage of equipment, tools and car parts. AUTODOC strongly recommends to be careful and observe the safety rules when performing repair or replacement works. Remember: usage of low quality auto parts does not guarantee you the appropriate level of road safety.

© Copyright 2023 – All the contents of this website, in particular texts, photographs and graphics, are protected by copyright. All rights, including reproduction, publication, editing and translation rights, are reserved by AUTODOC SE.