



How to change front anti
roll bar links on
Mercedes W168 –
replacement guide

VIDEO TUTORIAL



Important!

This replacement procedure can be used for:

MERCEDES-BENZ A-Class (W168) A 140 (168.031, 168.131), MERCEDES-BENZ A-Class (W168) A 160 CDI (168.007), MERCEDES-BENZ A-Class (W168) A 170 CDI (168.008), MERCEDES-BENZ A-Class (W168) A 190 (168.032, 168.132), MERCEDES-BENZ A-Class (W168) A 160 CDI (168.006), MERCEDES-BENZ A-Class (W168) A 170 CDI (168.009, 168.109), MERCEDES-BENZ A-Class (W168) A 210 (168.035, 168.135)

The steps may slightly vary depending on the car design.

REPLACEMENT: ANTI ROLL BAR LINKS – MERCEDES W168. LIST OF THE TOOLS YOU'LL NEED:



- Wire brush
- WD-40 spray
- Brake cleaner
- Copper grease
- Combination spanner #17
- Torx bit T30
- Wheel impact socket #17
- Ratchet wrench
- Torque wrench
- Wheel chock

BUY TOOLS

Replacement: anti roll bar links – Mercedes W168. Professionals recommend:

- Replace the stabiliser links on Mercedes W168 in pairs.
- The replacement procedure is identical for both stabiliser links on the same axle.
- All work should be done with the engine stopped.

**REPLACEMENT: ANTI ROLL BAR LINKS – MERCEDES W168.
RECOMMENDED SEQUENCE OF STEPS:**

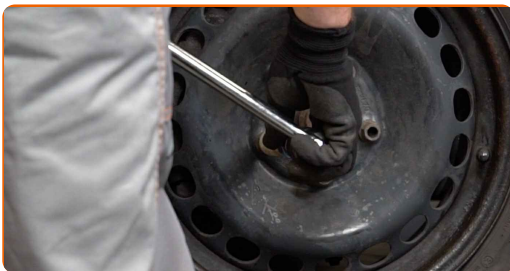
1

Secure the wheels with chocks.



2

Loosen the wheel mounting bolts. Use wheel impact socket #17.



3

Raise the front of the car and secure on supports.



4

Unscrew the wheel bolts.

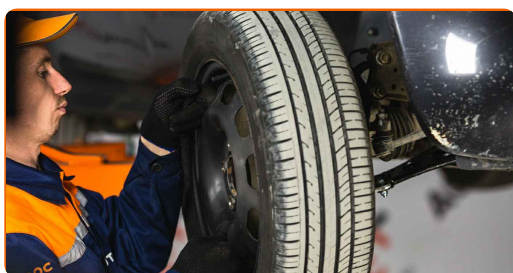


AUTODOC recommends:

- Important! Hold the wheel while unscrewing the fastening bolts. Mercedes W168

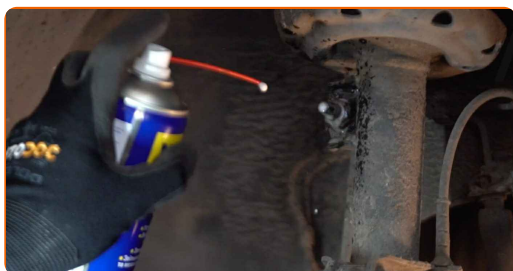
5

Remove the wheel.



6

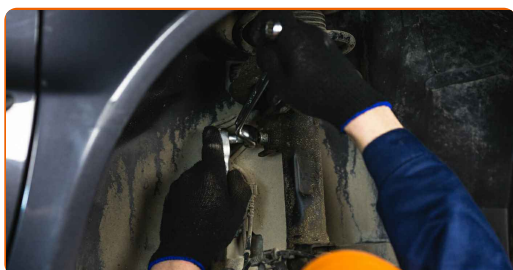
Clean the stabiliser link fasteners. Use a wire brush. Use WD-40 spray.



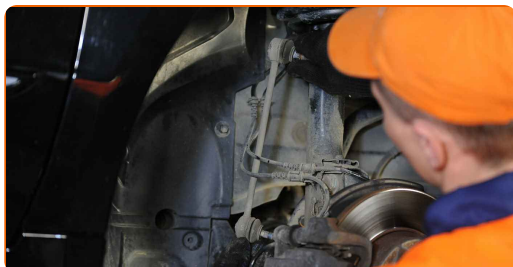
- 7 Unscrew the fastener connecting the stabilizer link to the stabilizer bar. Use a combination spanner #17. Use Torx T30. Use a ratchet wrench.



- 8 Unscrew the fastener connecting the stabilizer link to the shock strut. Use a combination spanner #17. Use Torx T30. Use a ratchet wrench.

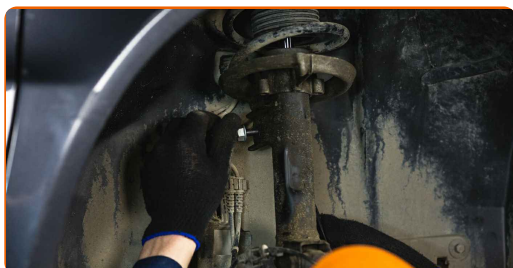


- 9 Remove the stabilizer rod.

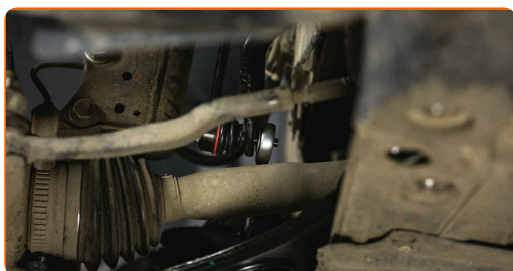


- 10 Clean the mounting seats of the stabiliser link. Use a wire brush. Use WD-40 spray.

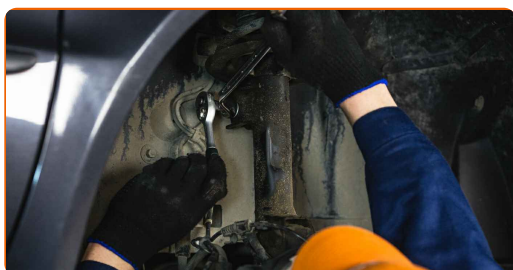
- 11 Install a new rod, tighten the fasteners.



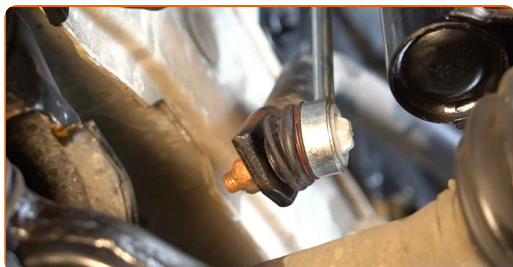
- 12 Tighten the fastener connecting the stabilizer link to the stabilizer bar. Use a combination spanner #17. Use Torx T30. Use a torque wrench. Tighten it to 60 Nm torque.



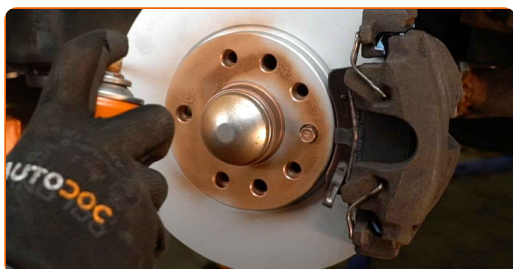
- 13 Tighten the fastener connecting the stabilizer link to the shock strut. Use a combination spanner #17. Use Torx T30. Use a torque wrench. Tighten it to 60 Nm torque.



- 14 Treat all joints of the stabiliser link. Use copper grease.



- 15 Treat the surface where the brake disc contacts the wheel rim. Use copper grease.



16

Clean the brake disk surface. Use a brake cleaner.

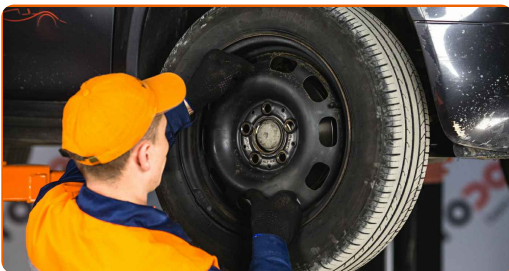


Replacement: anti roll bar links – Mercedes W168. Tip from AUTODOC:

- After applying the spray, wait a few minutes.

17

Install the wheel.



Replacement: anti roll bar links – Mercedes W168. Tip from AUTODOC experts:

- To avoid injury, hold up the wheel when screwing in the fastening bolts.

18

Screw in the wheel bolts. Use wheel impact socket #17.

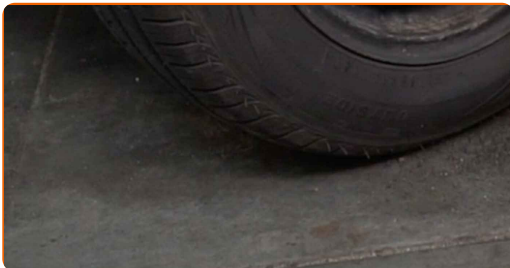


19

Lower the car and working in a cross order, tighten the wheel bolts. Use wheel impact socket #17. Use a torque wrench. Tighten it to 120 nm torque.

**20**

Remove the jacks and chocks.



WELL DONE! 

VIEW MORE TUTORIALS

AUTODOC – TOP QUALITY AND AFFORDABLE CAR PARTS ONLINE

AUTODOC MOBILE APP: GREAT DEALS AND CONVENIENT SHOPPING



+ AUTODOC

GET IT ON
Google Play

Download on the
App Store

Download

A GREAT SELECTION OF SPARE PARTS FOR YOUR CAR

BUY SPARE PARTS FOR MERCEDES

ANTI ROLL BAR LINKS: A WIDE SELECTION

CHOOSE CAR PARTS FOR MERCEDES W168

ANTI ROLL BAR LINKS FOR MERCEDES: BUY NOW

**ANTI ROLL BAR LINKS FOR MERCEDES W168: THE BEST
DEALS & OFFERS**

DISCLAIMER:

The document contains only general recommendations that may be useful for you when you perform repair or replacement work. AUTODOC shall not be liable for any loss, injury, damage of property occurring in the repair or replacement process due to incorrect use or misinterpretation of the provided information.

AUTODOC shall not be liable for any possible mistakes and uncertainties in this guide. The information provided is for information purposes only and cannot replace advice from specialists.

AUTODOC shall not be liable for incorrect or hazardous usage of equipment, tools and car parts. AUTODOC strongly recommends to be careful and observe the safety rules when performing repair or replacement works. Remember: usage of low quality auto parts does not guarantee you the appropriate level of road safety.

© Copyright 2022 – All the contents of this website, in particular texts, photographs and graphics, are protected by copyright. All rights, including reproduction, publication, editing and translation rights, are reserved by AUTODOC GmbH.