



How to change rear
brake pads on **BMW E39**
– replacement guide

VIDEO TUTORIAL



i Important!

This replacement procedure can be used for:

BMW 5 Saloon (E39) 520i 2.0, BMW 5 Saloon (E39) 525tds 2.5, BMW 5 Saloon (E39) 523i 2.5, BMW 5 Saloon (E39) 528i 2.8, BMW 5 Saloon (E39) 540i 4.4, BMW 5 Saloon (E39) 535i 3.5, BMW 5 Touring (E39) 520i 2.0, BMW 5 Touring (E39) 523i 2.5, BMW 5 Touring (E39) 540i 4.4, BMW 5 Saloon (E39) 525td 2.5, BMW 5 Touring (E39) 528i 2.8, BMW 5 Saloon (E39) 530d 3.0, BMW 5 Touring (E39) 530d 3.0, BMW 5 Touring (E39) 525tds 2.5, BMW 5 Saloon (E39) 520d 2.0, (+ 9)

The steps may slightly vary depending on the car design.

REPLACEMENT: BRAKE PADS – BMW E39. LIST OF THE TOOLS YOU'LL NEED:



- Wire brush
- All-purpose cleaning spray
- Brake cleaner
- Anti-squeal paste
- Copper grease
- HEX bit no.H7.
- Wheel impact socket #17
- Ratchet wrench
- Torque wrench
- Brake caliper wind back tool
- Crow bar
- Fender cover
- Wheel chock

BUY TOOLS

Replacement: brake pads – BMW E39. AUTODOC experts recommend:

- Perform the replacement of brake pads in complete set for each axis. This provides effective braking.
- The replacement procedure is identical for all brake pads on the same axle.
- All work should be done with the engine stopped.

REPLACEMENT: BRAKE PADS – BMW E39. RECOMMENDED SEQUENCE OF STEPS:

1

Open the bonnet.

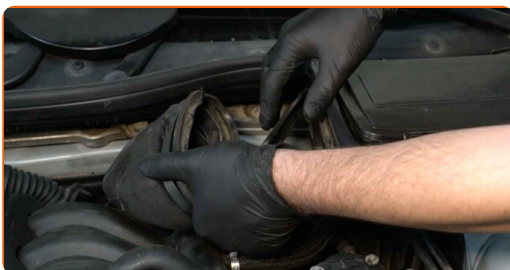


2

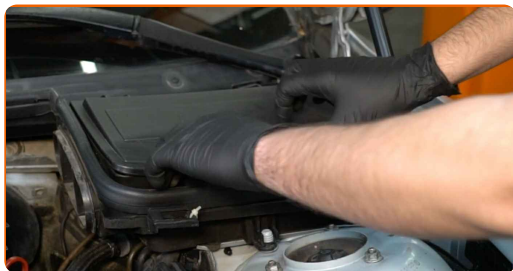
Use a fender protection cover to prevent damaging paintwork and plastic parts of the car.

3

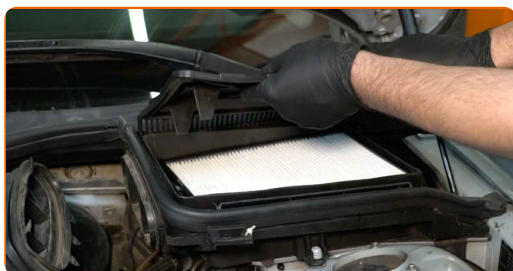
Detach the air duct from the cabin filter housing.



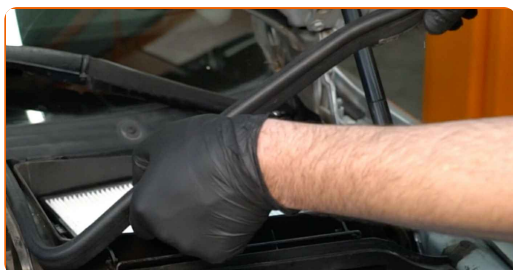
4 Release the cabin filter cover clips.



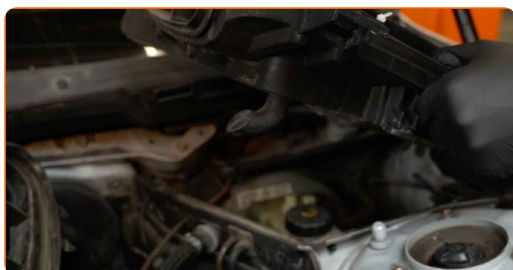
5 Remove the cabin filter housing cover.



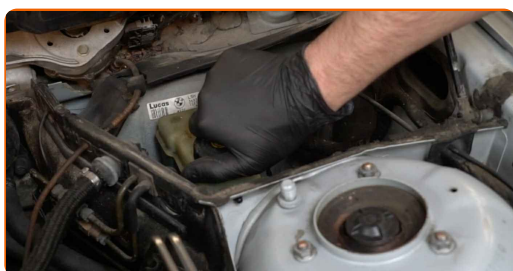
6 Remove the cabin filter housing seal.



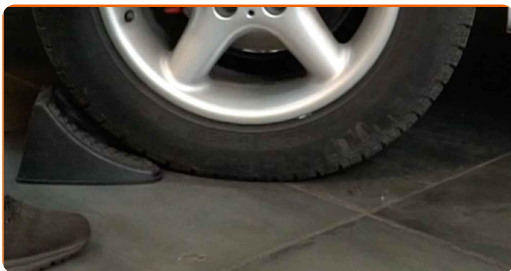
7 Remove the cabin air filter housing.



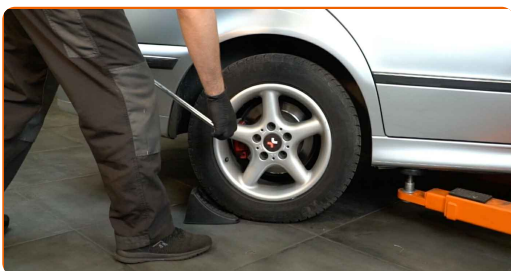
8 Unscrew the brake fluid reservoir cap.



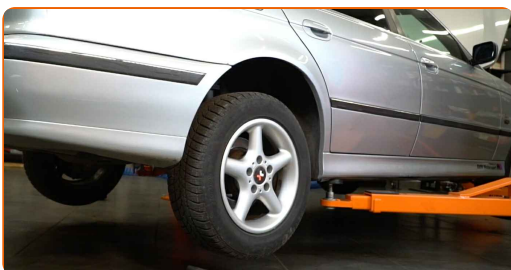
9 Secure the wheels with chocks.



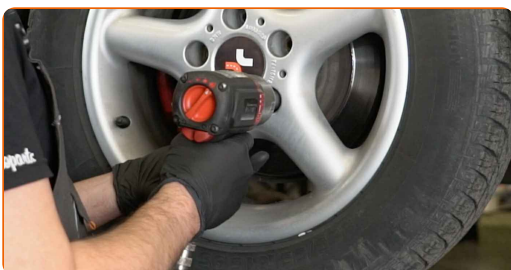
10 Loosen the wheel mounting bolts. Use wheel impact socket #17.



11 Raise the rear of the car and secure on supports.



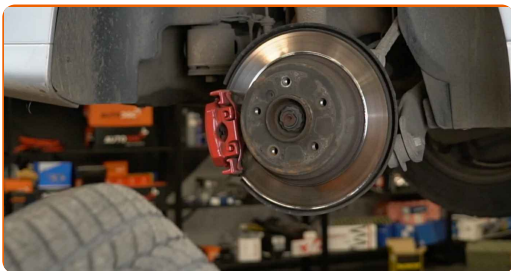
12 Unscrew the wheel bolts.



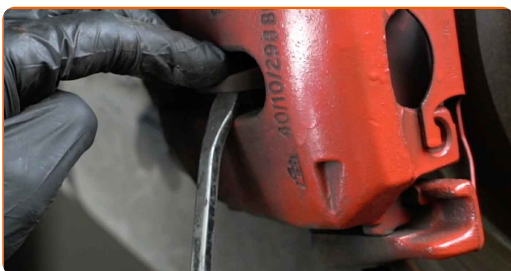
Replacement: brake pads – BMW E39. Tip:

- To avoid injury, hold up the wheel when unscrewing the bolts.

13 Remove the wheel.



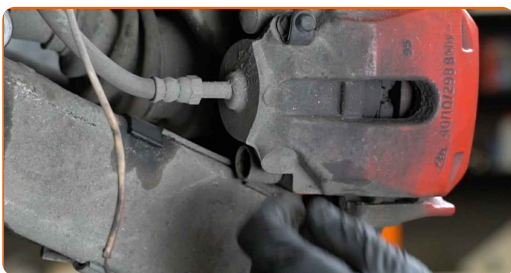
14 Disconnect the brake pads wear sensor. Use a crowbar.



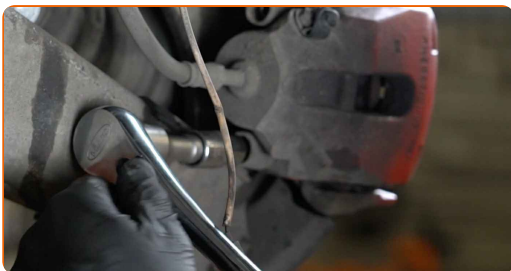
Please note!

- Some cars are not equipped with the brake pad wear sensor.

15 Remove the dust boot caps of the brake caliper guide pins. Use a crowbar.



16 Unscrew the brake caliper fastening. Use HEX No.H7. Use a ratchet wrench.

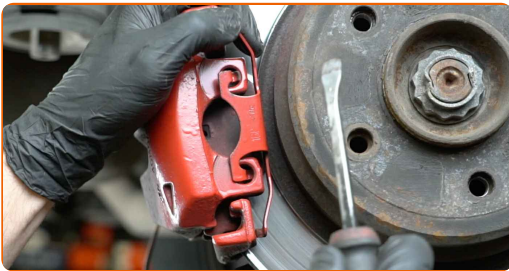


17

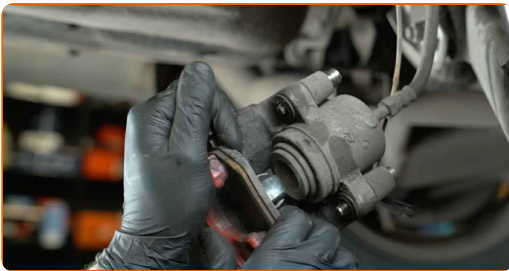
Spread the brake pads. Use a crowbar.

**18**

Detach the brake caliper retaining spring. Use a crowbar.

**19**

Remove the brake caliper.



Replacement: brake pads – BMW E39. AUTODOC recommends:

- Tie the caliper to the suspension or to the body with a wire without disconnecting from the brake hose to prevent depressurization of the brake system.
- Make sure that the brake caliper is not hanging on the brake hose.
- Don't press the brake pedal after the brake caliper has been removed. As a result, the piston can fall out from the brake cylinder, and brake fluid leakage and depressurization of the system may occur.
- Check the brake caliper bracket, brake caliper guide pins and boots. Clean them. Replace, if necessary.

20

Remove the brake pads.

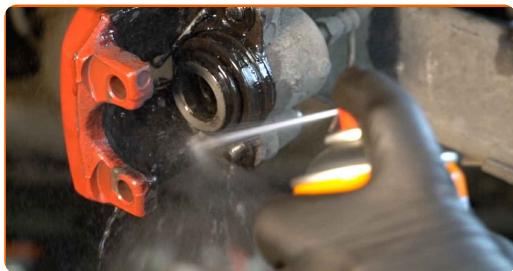


Replacement: brake pads – BMW E39. Tip from AUTODOC experts:

- Measure the brake disc thickness. Upon reaching the wear limit the part must be replaced.

21

Treat the brake caliper piston. Use a brake cleaner.

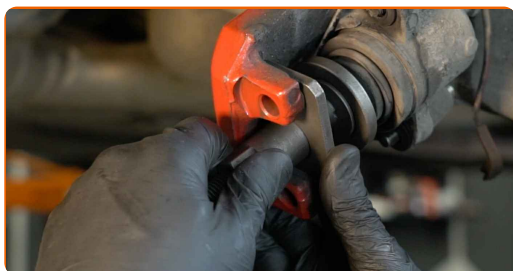


Replacement: brake pads – BMW E39. Tip from AUTODOC:

- After applying the spray, wait a few minutes.

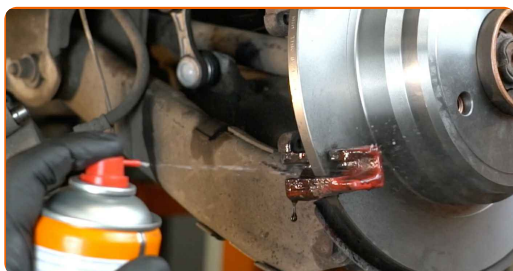
22

Press in the brake caliper piston. Use brake caliper wind back tool.



23

Clean the brake caliper bracket from dirt and dust. Use a wire brush. Use all-purpose cleaning spray.



- 24 Treat the brake pads in the area where their surface comes into contact with the brake caliper bracket. Use anti-squeal paste.



AUTODOC recommends:

- Make sure the disc surface is clean before installing the pads.

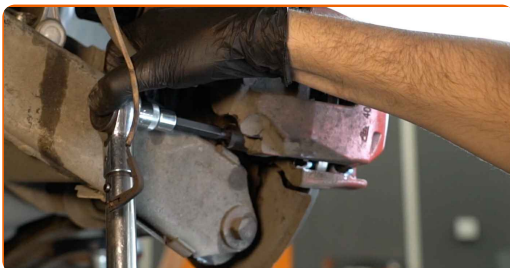
- 25 Install new brake pads.



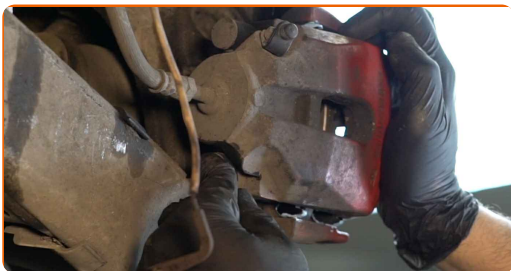
AUTODOC recommends:

- Make sure the pads are installed with linings facing the disc.

- 26 Install the brake caliper and fix it. Use HEX No.H7. Use a torque wrench. Tighten it to 30 Nm torque.



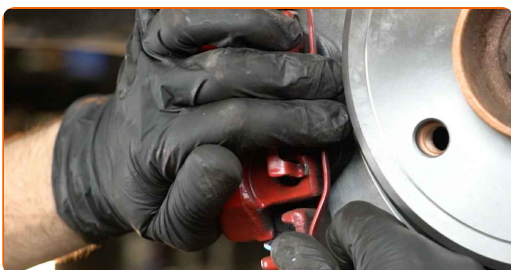
- 27 Install the dust boot caps of the brake caliper guide pins.



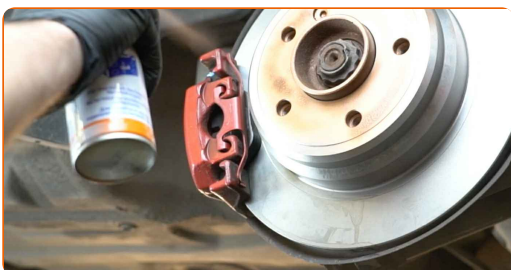
- 28 Connect the brake pads wear sensor.



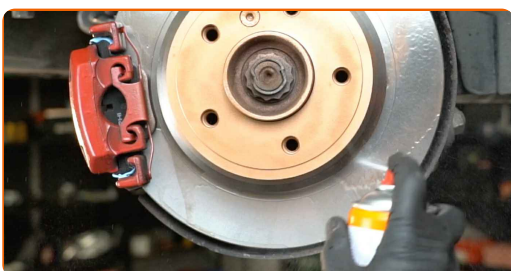
- 29 Install the brake caliper retaining spring.



- 30 Treat the surface where the brake disc contacts the wheel rim. Use copper grease.



- 31 Clean the brake disk surface. Use a brake cleaner.

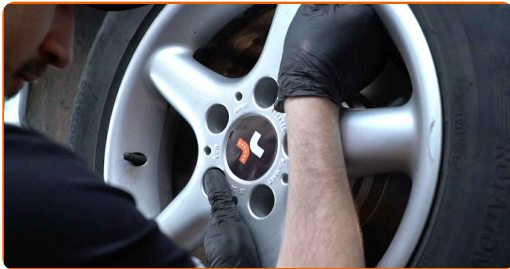


AUTODOC recommends:

- Replacement: brake pads – BMW E39. After applying the spray, wait a few minutes.

32

Install the wheel.



Replacement: brake pads – BMW E39. Tip:

- To avoid injury, hold up the wheel when screwing in the fastening bolts.

33

Screw in the wheel bolts. Use wheel impact socket #17.



34

Lower the car and working in a cross order, tighten the wheel bolts. Use wheel impact socket #17. Use a torque wrench. Tighten it to 120 Nm torque.



Replacement: brake pads – BMW E39. AUTODOC experts recommend:

- Check the brake fluid level in the expansion tank and refill if necessary.

35

Tighten the brake fluid reservoir cap.

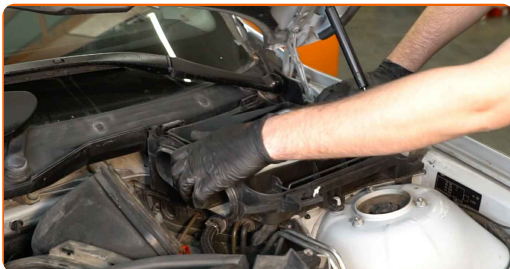


AUTODOC recommends:

- BMW E39 – Without starting the engine, press the brake pedal several times until it feels firm.

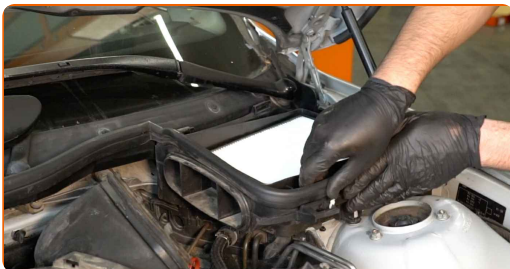
36

Install the cabin air filter housing.



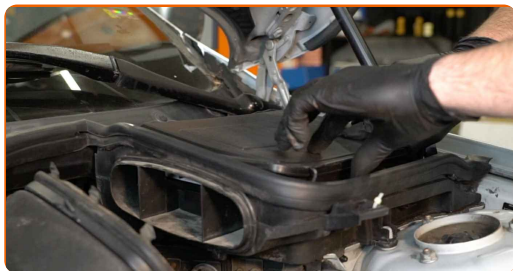
37

Reinstall the cabin filter housing seal.



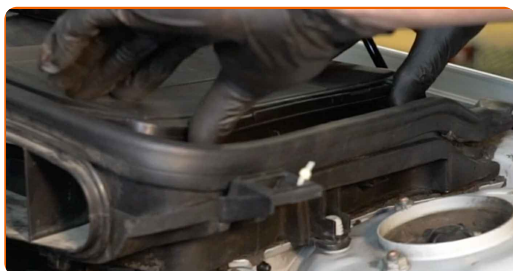
38

Reinstall the cabin filter housing cover. Make sure you hear a click indicating that it is locked in place.



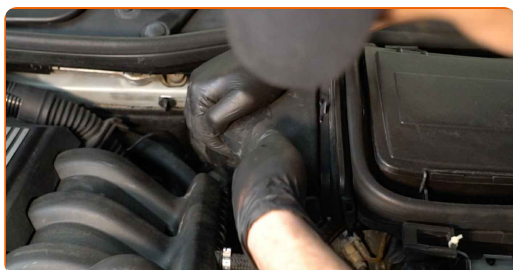
39

Attach the cabin filter cover clips.



40

Install the air duct housing.



41

Remove the fender protection cover.

42

Close the hood.



43

Remove the jacks and chocks.



Replacement: brake pads – BMW E39. Professionals recommend:

- Slow down smoothly for first 150-200 km after the brake pads replacement. Avoid unnecessary and sharp braking to a stop.

WELL DONE! 

[VIEW MORE TUTORIALS](#)

AUTODOC – TOP QUALITY AND AFFORDABLE CAR PARTS ONLINE

AUTODOC MOBILE APP: GREAT DEALS AND CONVENIENT SHOPPING



+ AUTODOC

GET IT ON
Google Play

Download on the
App Store

Download

A GREAT SELECTION OF SPARE PARTS FOR YOUR CAR

BUY SPARE PARTS FOR BMW

BRAKE PADS: A WIDE SELECTION

CHOOSE CAR PARTS FOR BMW E39

BRAKE PADS FOR BMW: BUY NOW

BRAKE PADS FOR BMW E39: THE BEST DEALS & OFFERS

DISCLAIMER:

The document contains only general recommendations that may be useful for you when you perform repair or replacement work. AUTODOC shall not be liable for any loss, injury, damage of property occurring in the repair or replacement process due to incorrect use or misinterpretation of the provided information.

AUTODOC shall not be liable for any possible mistakes and uncertainties in this guide. The information provided is for information purposes only and cannot replace advice from specialists.

AUTODOC shall not be liable for incorrect or hazardous usage of equipment, tools and car parts. AUTODOC strongly recommends to be careful and observe the safety rules when performing repair or replacement works. Remember: usage of low quality auto parts does not guarantee you the appropriate level of road safety.

© Copyright 2023 – All the contents of this website, in particular texts, photographs and graphics, are protected by copyright. All rights, including reproduction, publication, editing and translation rights, are reserved by AUTODOC SE.