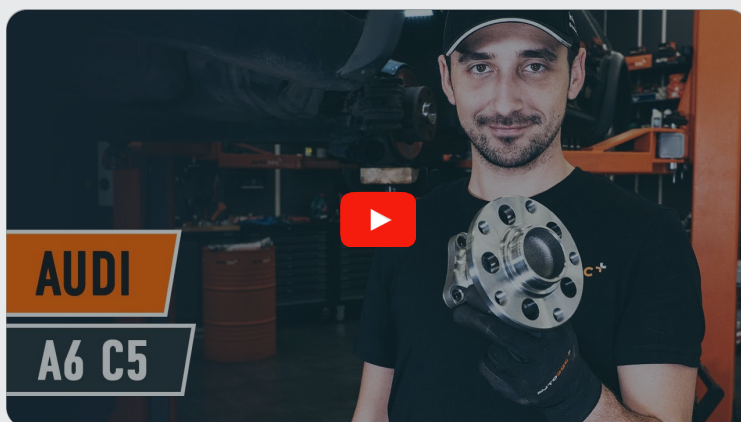




How to change rear  
wheel bearing on **Audi**  
**A6 C5 Avant** –  
replacement guide

## VIDEO TUTORIAL

** Important!**

This replacement procedure can be used for:

AUDI A6 Saloon (4B2, C5) 1.8 T, AUDI A6 Saloon (4B2, C5) 1.8, AUDI A6 Avant (4B5, C5) 1.8, AUDI A6 Avant (4B5, C5) 1.8 T

---

The steps may slightly vary depending on the car design.

**REPLACEMENT: WHEEL BEARING – AUDI A6 C5  
AVANT. LIST OF THE TOOLS YOU'LL NEED:**



- Wire brush
- Nylon cleaning brush
- WD-40 spray
- All-purpose cleaning spray
- Brake cleaner
- Copper grease
- Torque wrench
- Combination spanner #15
- Drive socket # 13
- HEX bit No.H8
- Wheel impact socket #17
- Ratchet wrench
- Flat screwdriver
- Tap wrench
- Impact screwdriver
- Pincers
- Crow bar
- Wheel chock

**BUY TOOLS**

**AUTODOC recommends:**

- Do not re-use the bearing assembly of your Audi A6 C5 Avant car.
- The wheel hub bearing replacement procedure is identical for both wheels on the same axle.
- Please note: all work on the car – Audi A6 C5 Avant – should be done with the engine switched off.

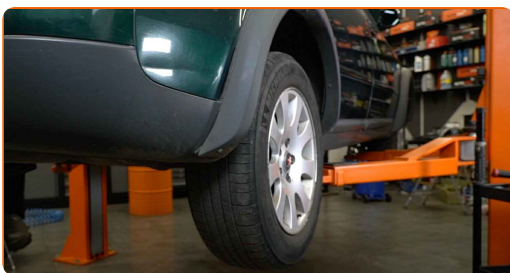
**CARRY OUT REPLACEMENT IN THE FOLLOWING ORDER:**

**1** Secure the wheels with chocks.

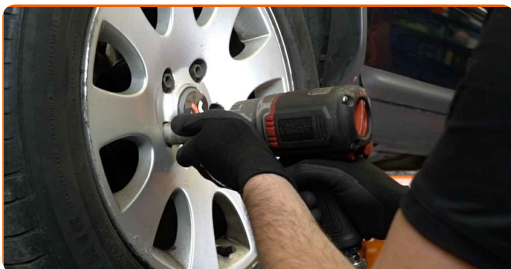
**2** Loosen the wheel mounting bolts. Use wheel impact socket #17.



**3** Raise the rear of the car and secure on supports.



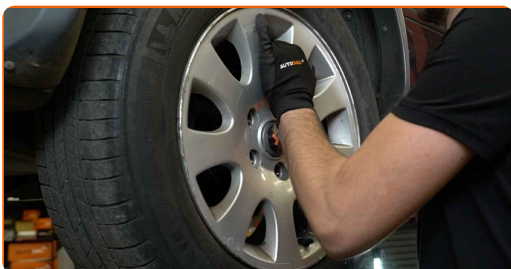
**4** Unscrew the wheel bolts.



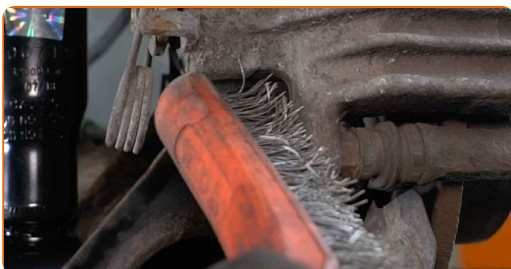
**AUTODOC recommends:**

- Warning! To avoid injury, hold the wheel while unscrewing the fastening bolts.  
Audi A6 C5 Avant

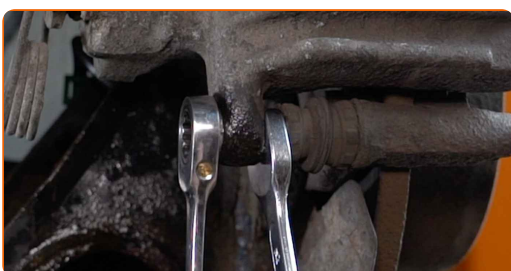
**5** Remove the wheel.



**6** Clean the brake caliper fasteners. Use a wire brush. Use WD-40 spray.



**7** Unscrew the brake caliper fastening. Use a combination spanner #15. Use a drive socket #13. Use a ratchet wrench.



8

Remove the brake caliper. Use a crowbar.

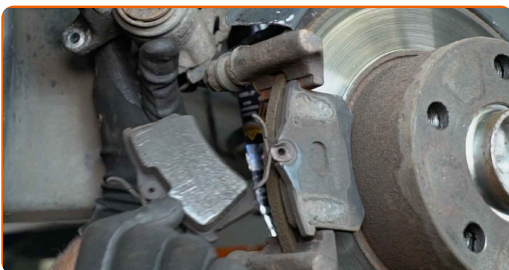


Replacement: wheel bearing – Audi A6 C5 Avant. AUTODOC experts recommend:

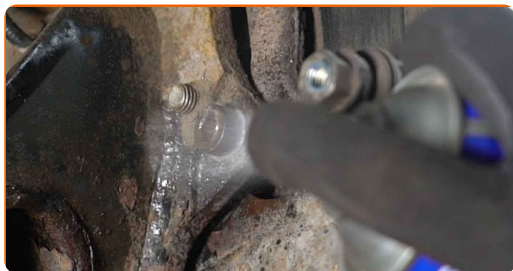
- Tie the caliper to the suspension or to the body with a wire without disconnecting from the brake hose to prevent depressurization of the brake system.
- Make sure that the brake caliper is not hanging on the brake hose.
- Don't press the brake pedal after the brake caliper has been removed. As a result, the piston can fall out from the brake cylinder, and brake fluid leakage and depressurization of the system may occur.
- Check the brake caliper bracket, brake caliper guide pins and boots. Clean them. Replace, if necessary.

9

Remove the brake pads. Use a crowbar.



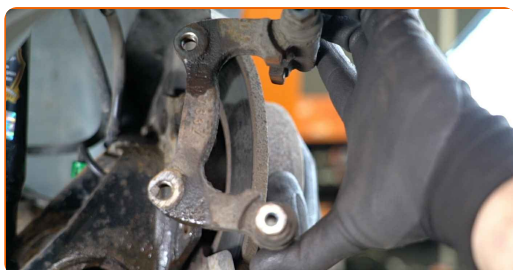
**10** Clean the brake caliper bracket fasteners. Use a wire brush. Use WD-40 spray.



**11** Unscrew the caliper bracket fastening. Use HEX No.H8. Use a tap wrench. Use a ratchet wrench.



**12** Remove the caliper bracket.

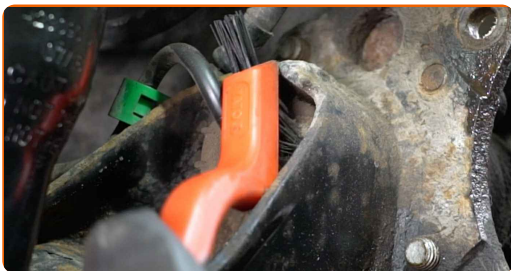


**13** Remove the brake disc.

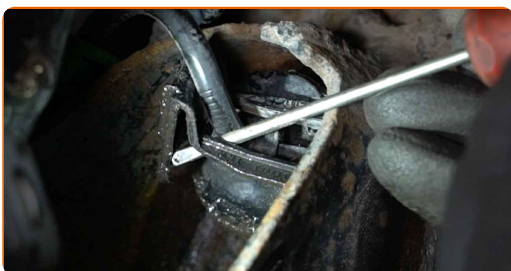




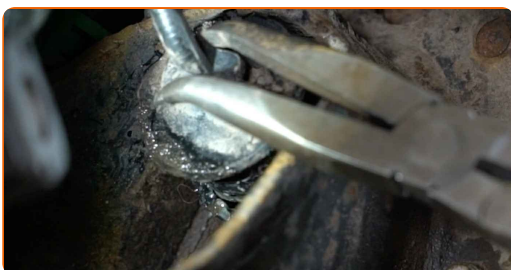
**14** Clean the ABS sensor fastener. Use a nylon cleaning brush. Use all-purpose cleaning spray.



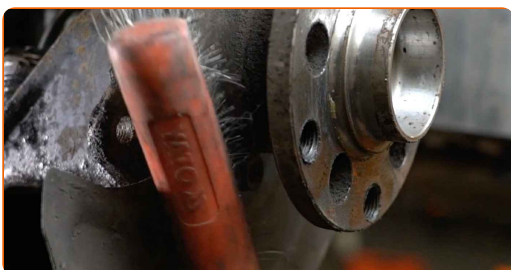
**15** Detach the ABS sensor fastener. Use a flat screwdriver.



**16** Disconnect the ABS sensor. Use pincers.



**17** Clean the wheel hub fastener. Use a wire brush. Use WD-40 spray.





**18** Unscrew the wheel hub bolts. Use HEX No.H8. Use an impact screwdriver. Use a ratchet wrench.



**19** Remove the hub and the bearing together, since they are a sealed unit.



**20** Remove the brake disc baffle plate.



**21** Clean the hub bearing mounting seat. Use a wire brush. Use WD-40 spray.



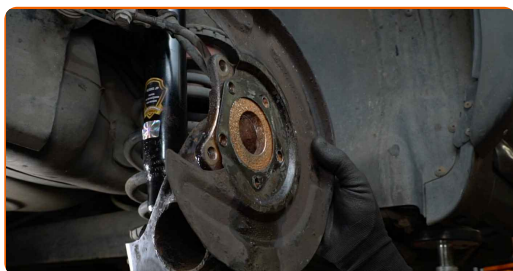
**22** Treat the wheel hub fasteners. Use copper grease.



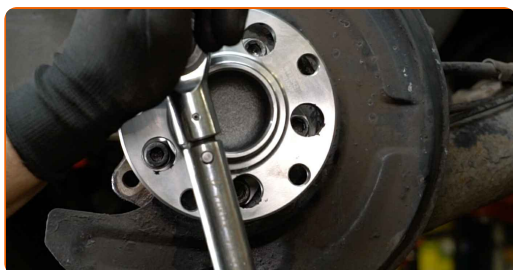
**23** Install the new wheel hub with a bearing.



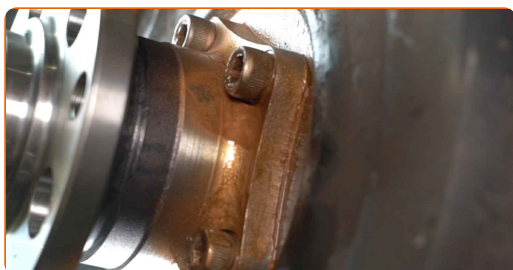
**24** Install the brake disc baffle plate.



**25** Tighten the wheel hub bolts. Use HEX No.H8. Use a torque wrench. Tighten it to 60 Nm torque.



**26** Treat the wheel hub fasteners. Use copper grease.

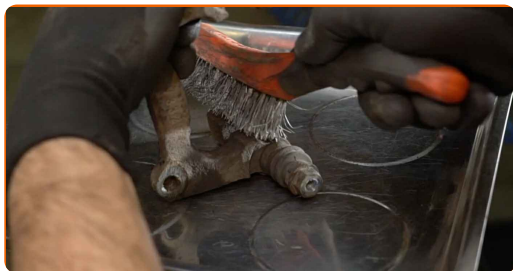


**27** Install the brake disc.



28

Clean the brake caliper bracket from dirt and dust. Use a wire brush. Use a brake cleaner.

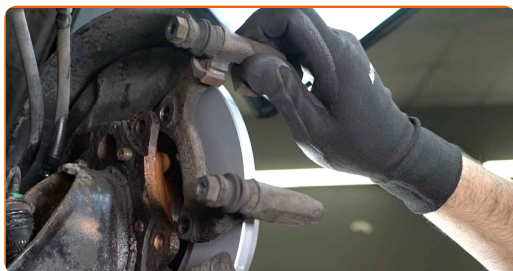


**AUTODOC recommends:**

- Replacement: wheel bearing – Audi A6 C5 Avant. After applying the spray, wait a few minutes.

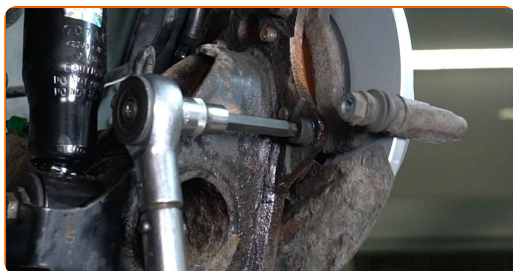
29

Install the brake caliper bracket.



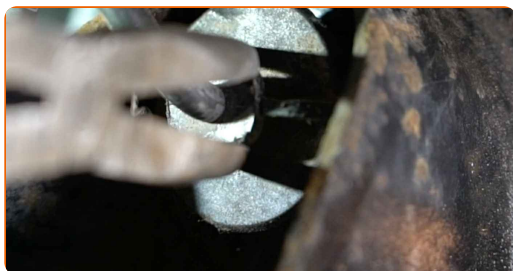
30

Tighten the brake caliper bracket. Use HEX No.H8. Use a torque wrench. Tighten it to 95 Nm torque.

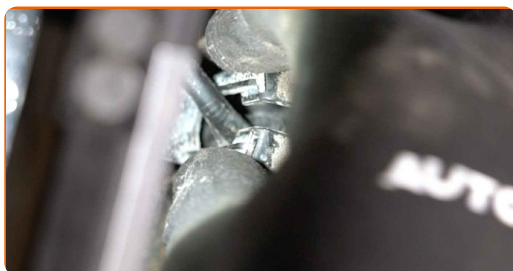


31

Connect the ABS sensor. Use pincers.



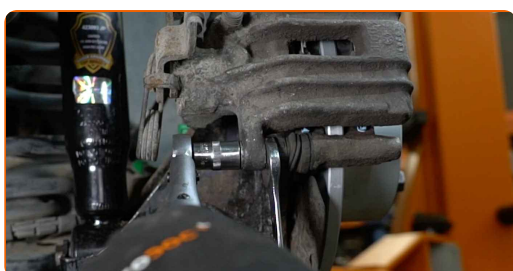
**32** Attach the ABS sensor fastener.



**33** Install the brake pads.



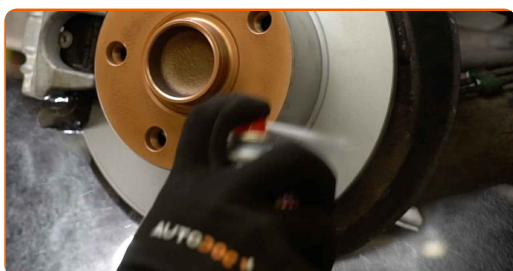
**34** Install the brake caliper and fix it. Use a combination spanner #15. Use a drive socket #13. Use a torque wrench. Tighten it to 35 Nm torque.



**35** Treat the surface where the brake disc contacts the wheel rim. Use copper grease.



**36** Clean the brake disk surface. Use a brake cleaner.



Replacement: wheel bearing – Audi A6 C5 Avant. Tip from AUTODOC experts:

- After applying the spray, wait a few minutes.

37

Install the wheel.



AUTODOC recommends:

- Warning! To avoid injury, hold the wheel while screwing in the fastening bolts on the car. Audi A6 C5 Avant

38

Screw in the wheel bolts. Use wheel impact socket #17.



39

Lower the car and working in a cross order, tighten the wheel bolts. Use wheel impact socket #17. Use a torque wrench. Tighten it to 120 Nm torque.





40

Remove the jacks and chocks.



Replacement: wheel bearing – Audi A6 C5 Avant. AUTODOC recommends:

- Without starting the engine, press the brake pedal several times until you feel significant resistance.

**WELL DONE!** 

[VIEW MORE TUTORIALS](#)

# AUTODOC – TOP QUALITY AND AFFORDABLE CAR PARTS ONLINE

**AUTODOC MOBILE APP: GREAT DEALS AND CONVENIENT SHOPPING**



**+ AUTODOC**

GET IT ON **Google Play**

Download on the **App Store**

**Download**

**A GREAT SELECTION OF SPARE PARTS FOR YOUR CAR**

**BUY SPARE PARTS FOR AUDI**

**WHEEL BEARING: A WIDE SELECTION**



**CHOOSE CAR PARTS FOR AUDI A6 C5 AVANT**

**WHEEL BEARING FOR AUDI: BUY NOW**

**WHEEL BEARING FOR AUDI A6 C5 AVANT: THE BEST DEALS & OFFERS**

### **DISCLAIMER:**

The document contains only general recommendations that may be useful for you when you perform repair or replacement work. AUTODOC shall not be liable for any loss, injury, damage of property occurring in the repair or replacement process due to incorrect use or misinterpretation of the provided information.

AUTODOC shall not be liable for any possible mistakes and uncertainties in this guide. The information provided is for information purposes only and cannot replace advice from specialists.

AUTODOC shall not be liable for incorrect or hazardous usage of equipment, tools and car parts. AUTODOC strongly recommends to be careful and observe the safety rules when performing repair or replacement works. Remember: usage of low quality auto parts does not guarantee you the appropriate level of road safety.

© Copyright 2022 – All the contents of this website, in particular texts, photographs and graphics, are protected by copyright. All rights, including reproduction, publication, editing and translation rights, are reserved by AUTODOC GmbH.