



# How to change tailgate struts on **BMW E92** – replacement guide

## VIDEO TUTORIAL



### Important!

This replacement procedure can be used for:

BMW 3 Coupe (E92) 318i 2.0, BMW 3 Saloon (E90) 320i 2.0, BMW 3 Saloon (E90) 325i 2.5, BMW 3 Saloon (E90) 330i 3.0, BMW 3 Saloon (E90) 320d 2.0, BMW 3 Saloon (E90) 318i 2.0, BMW 3 Saloon (E90) 318d 2.0, BMW 3 Saloon (E90) 330d 3.0, BMW 3 Saloon (E90) 325xi 2.5, BMW 3 Saloon (E90) 330xi 3.0, BMW 3 Saloon (E90) 330xd 3.0, BMW 3 Saloon (E90) 320si 2.0, BMW 3 Coupe (E92) 335i 3.0, BMW 3 Saloon (E90) 335i 3.0, BMW 3 Coupe (E92) 335d 3.0, (+ 33)

The steps may slightly vary depending on the car design.

## REPLACEMENT: TAILGATE STRUTS – BMW E92. TOOLS YOU'LL NEED:



- Multipurpose grease

- Flat Screwdriver

**BUY TOOLS**

### Replacement: tailgate struts – BMW E92. AUTODOC recommends:

- Right and left gas struts of the boot lid should be replaced simultaneously.
- The replacement procedure is identical for the right and left gas struts of the boot lid.
- All work should be done with the engine stopped.

## REPLACEMENT: TAILGATE STRUTS – BMW E92. RECOMMENDED SEQUENCE OF STEPS:

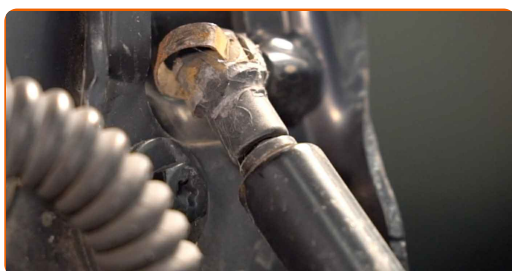
1

Open the boot lid.



2

Release the circlip connecting the gas strut to the boot lid. Use a flat screwdriver.



3

Release the circlip connecting the gas strut to the car body. Use a flat screwdriver.



Replacement: tailgate struts – BMW E92. AUTODOC experts recommend:

- To avoid any injuries, be sure to hold the boot lid while demounting the gas struts.

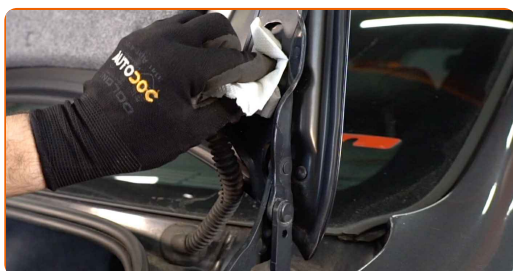
4

Remove the boot lid gas strut.



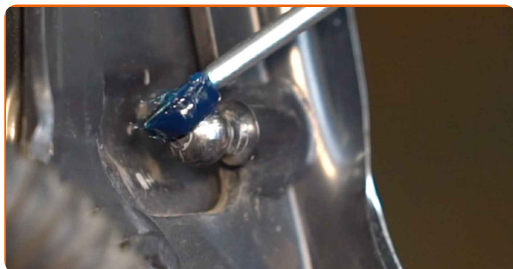
5

Clean the fasteners of the boot lid gas strut.



6

Treat the fasteners of the boot lid gas strut. Use a multipurpose grease.



7

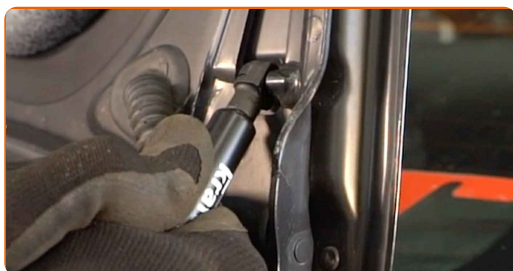
Install the new boot lid gas strut.

Replacement: tailgate struts – BMW E92. Professionals recommend:

- To avoid any injuries, be sure to hold the boot lid while installing the gas strut.

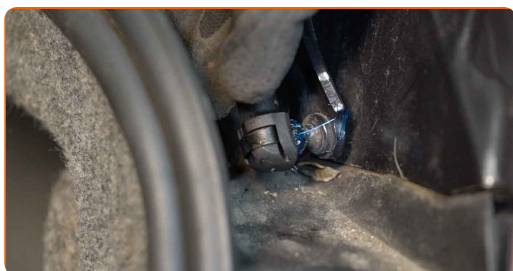
8

Snap on the circlip connecting the gas strut to the boot lid.



9

Snap on the circlip connecting the gas strut to the car body.



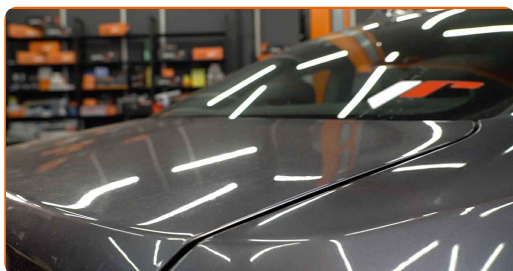
10

Check the working condition of the boot lid gas springs after they are installed.



11

Close the lid of the luggage compartment.



**WELL DONE!** 👍

**VIEW MORE TUTORIALS**

## AUTODOC – TOP QUALITY AND AFFORDABLE CAR PARTS ONLINE

**AUTODOC MOBILE APP: GREAT DEALS AND CONVENIENT SHOPPING**



**AUTODOC**

GET IT ON  
**Google Play**

Download on the  
**App Store**

**Download**

**A GREAT SELECTION OF SPARE PARTS FOR YOUR CAR**

**BUY SPARE PARTS FOR BMW**

**TAILGATE STRUTS: A WIDE SELECTION**

[\*\*CHOOSE CAR PARTS FOR BMW E92\*\*](#)[\*\*TAILGATE STRUTS FOR BMW: BUY NOW\*\*](#)[\*\*TAILGATE STRUTS FOR BMW E92: THE BEST DEALS & OFFERS\*\*](#)

### **DISCLAIMER:**

The document contains only general recommendations that may be useful for you when you perform repair or replacement work. AUTODOC shall not be liable for any loss, injury, damage of property occurring in the repair or replacement process due to incorrect use or misinterpretation of the provided information.

AUTODOC shall not be liable for any possible mistakes and uncertainties in this guide. The information provided is for information purposes only and cannot replace advice from specialists.

AUTODOC shall not be liable for incorrect or hazardous usage of equipment, tools and car parts. AUTODOC strongly recommends to be careful and observe the safety rules when performing repair or replacement works. Remember: usage of low quality auto parts does not guarantee you the appropriate level of road safety.

© Copyright 2021 – All the contents of this website, in particular texts, photographs and graphics, are protected by copyright. All rights, including reproduction, publication, editing and translation rights, are reserved by AUTODOC GmbH.