



How to change rear strut
mount on **BMW E46**
touring – replacement
guide

VIDEO TUTORIAL



i Important!

This replacement procedure can be used for:

BMW 3 Saloon (E36) 316i 1.6, BMW 3 Saloon (E36) 318i 1.8, BMW 3 Saloon (E36) 318is 1.8, BMW 3 Coupe (E36) 318is 1.8, BMW 3 Saloon (E36) 320i 2.0, BMW 3 Coupe (E36) 320i 2.0, BMW 3 Saloon (E36) 325i 2.5, BMW 3 Coupe (E36) 325i 2.5, BMW 3 Saloon (E36) 325td 2.5, BMW 3 Saloon (E36) 325tds 2.5, BMW 3 Convertible (E36) 320i 2.0, BMW 3 Convertible (E36) 325i 2.5, BMW 3 Coupe (E36) 316i 1.6, BMW 3 Convertible (E36) 318i 1.8, BMW 3 Saloon (E36) 318tds 1.7, (+ 79)

The steps may slightly vary depending on the car design.

REPLACEMENT: STRUT MOUNT – BMW E46 TOURING.
TOOLS YOU'LL NEED:



- Wire brush
- WD-40 spray
- Copper grease
- Combination spanner #16
- Drive socket # 10
- Drive socket # 13
- Drive socket # 18
- Torx bit T25
- Wheel impact socket #17
- Ratchet wrench
- Torque wrench
- Adjustable wrench
- Tap wrench
- Ear clamp pliers
- Phillips screwdriver
- Crow bar
- Vice
- Hydraulic transmission jack
- Wheel chock

BUY TOOLS

Replacement: strut mount – BMW E46 touring. Tip from AUTODOC experts:

- The replacement procedure is identical for the mounts of the right and left shock absorbers of the rear suspension.
- Both mounts of the rear shock struts should be replaced simultaneously.
- All work should be done with the engine stopped.

REPLACEMENT: STRUT MOUNT – BMW E46 TOURING. RECOMMENDED SEQUENCE OF STEPS:

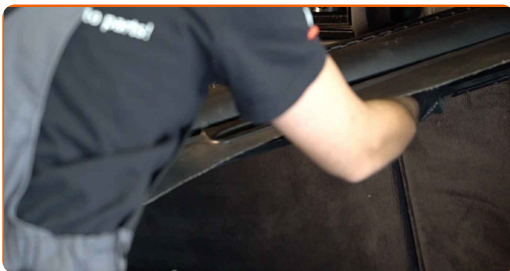
1

Open the boot lid.



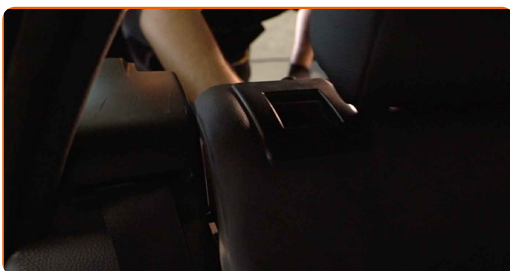
2

Move the folding shelf and detach it from the retainers. By doing this, you will get access to the side trim plastic panels.

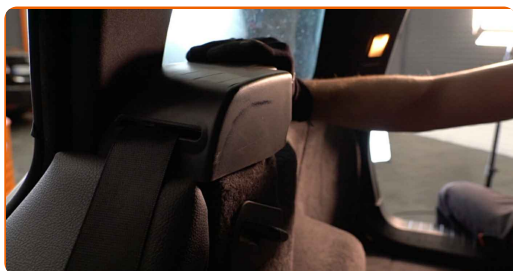


3

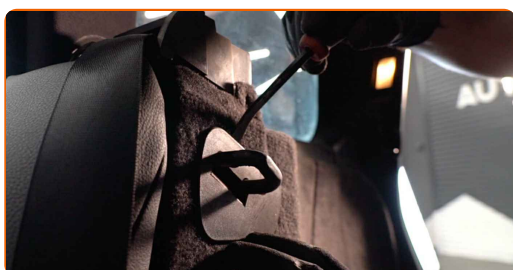
Fold down the backrests of the rear seats.



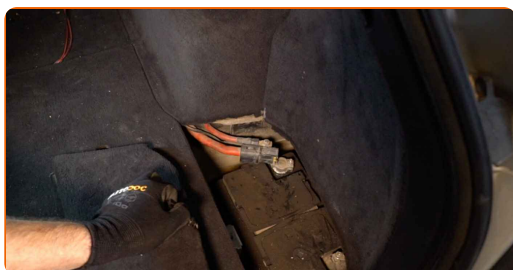
4 Remove the seat belt trim cover. Use a crowbar.



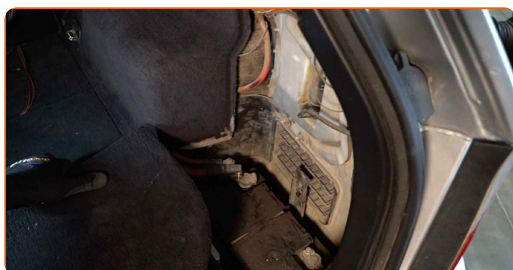
5 Remove the plastic clip of the boot front side lining. Use a crowbar.



6 Remove the battery cover.



7 Detach the boot rear side lining.



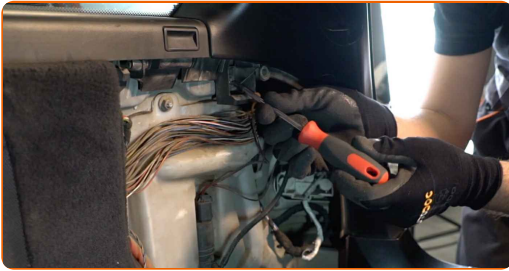
8 Unscrew the fasteners of the side plastic trim panel. Use Torx T25.



9.1 Unscrew the fasteners of the boot vent panel.



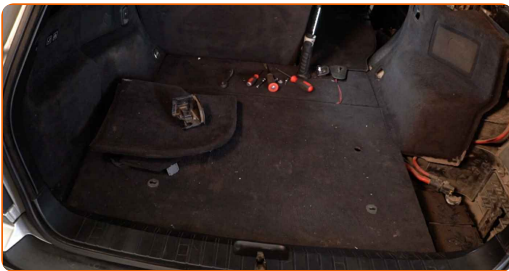
9.2 Use a drive socket #10. Use a Phillips screwdriver.



10 Unscrew the fasteners of the boot front side lining. Use a Phillips screwdriver.



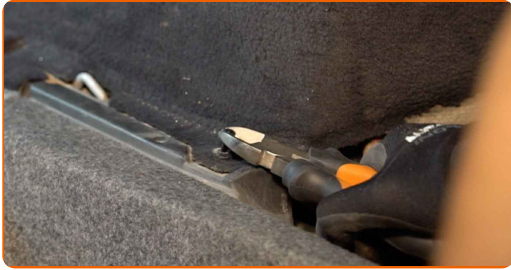
11 Detach the boot front side lining from the upper fasteners. Use a crowbar.



AUTODOC recommends:

- Replacement: strut mount – BMW E46 touring. Do not use excessive force when removing the part as this may damage it.

12 Remove the lower clip of the boot front side lining. Use ear clamp pliers.



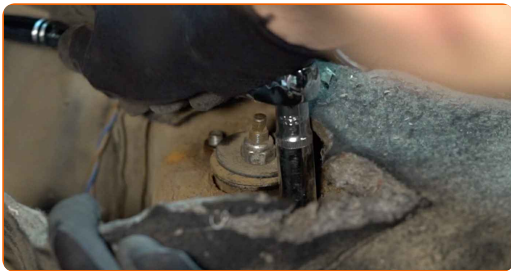
13 Remove the boot front side lining. Use a crowbar.



14 Clean the fasteners of the shock absorber upper mount. Use a wire brush. Use WD-40 spray.



15 Loosen the upper fastener of the shock absorber. Use a drive socket #13. Use a ratchet wrench.



16 Secure the wheels with chocks.



17 Loosen the wheel mounting bolts. Use wheel impact socket #17.



18 Raise the rear of the car and secure on supports.



19 Unscrew the wheel bolts.



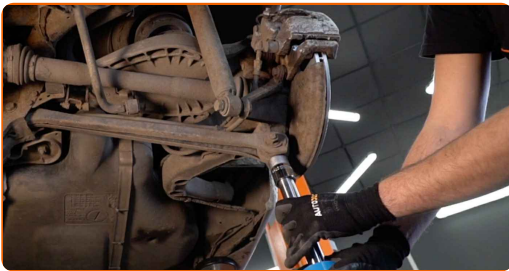
Replacement: strut mount – BMW E46 touring. AUTODOC recommends:

- To avoid injury, hold up the wheel when unscrewing the bolts.

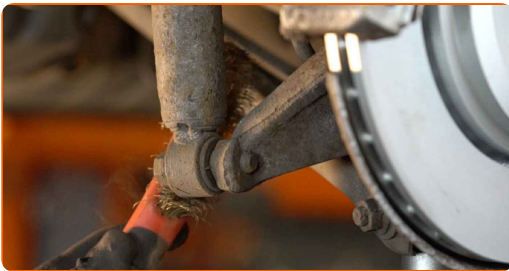
20 Remove the wheel.



21 Support the arm. Use a hydraulic transmission jack.



22 Clean the shock absorber fasteners. Use a wire brush. Use WD-40 spray.



23 Unscrew the lower fastener of the shock absorber. Use a drive socket #18. Use a tap wrench.



24

Unscrew the upper fastener of the shock absorber. Use a drive socket #13. Use a ratchet wrench.

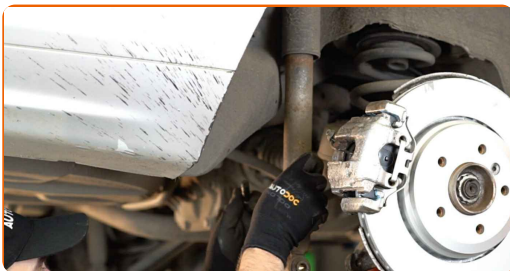


Replacement: strut mount – BMW E46 touring. Tip:

- To avoid injuries, hold the shock absorber when undoing the fastening bolts.

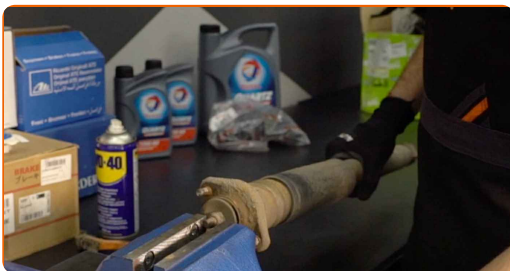
25

Remove the shock absorber.



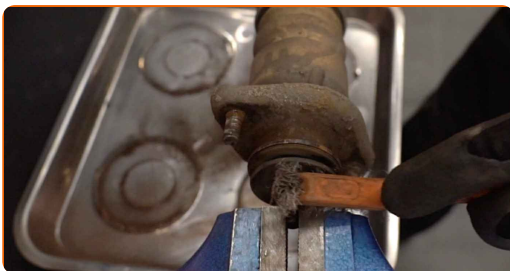
26

Grip the shock absorber in a vice.

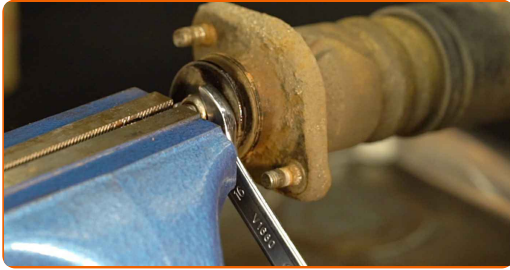


27

Clean the shock absorber rod fastener. Use a wire brush. Use WD-40 spray.



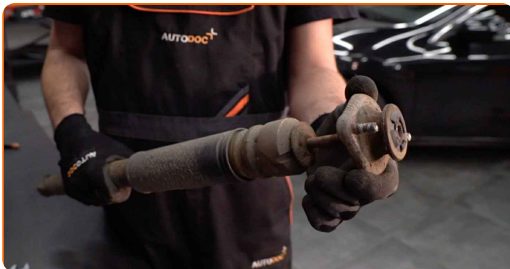
28 Remove the shock absorber piston rod fastening. Use a combination spanner #16.



29 Release the vice and take out the shock absorber.



30 Remove the shock absorber mount, boot and bump stop.



Replacement: strut mount – BMW E46 touring. Tip from AUTODOC experts:

- Examine the shock absorber dust cap and the bump stop. Replace them if necessary.

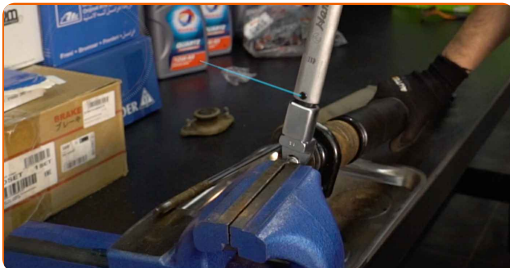
31 Install the new mount, boot, and bump stop on the shock absorber.



32 Grip the shock absorber in a vice.



33 Screw the shock strut piston rod upper fastening. Use a combination spanner #16. Use an adjustable wrench. Use a torque wrench. Tighten it to 20 Nm torque.



34 Release the vice and take out the shock absorber.



35 Clean the shock absorber mounting seats. Use a wire brush. Use WD-40 spray.

36 Place the shock absorber in the wheel arch and secure it.



AUTODOC recommends:

- Important! Hold the shock absorber while screwing in the fastening bolts. BMW E46 touring

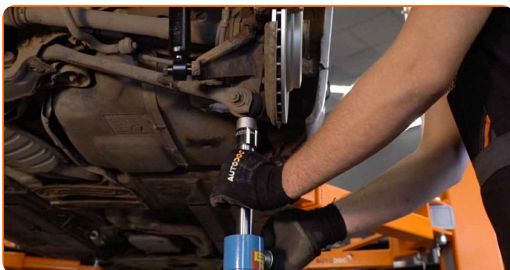
- 37** Tighten the lower fastener of the shock absorber. Use a drive socket #18. Use a torque wrench. Tighten it to 100 Nm torque.



- 38** Tighten the top shock absorber fastening. Use a drive socket #13. Use a torque wrench. Tighten it to 28 Nm torque.



- 39** Remove the support from under the arm.



AUTODOC recommends:

- Replacement: strut mount – BMW E46 touring. Lower the transmission jack smoothly, without jerks, to avoid damaging components and mechanisms.

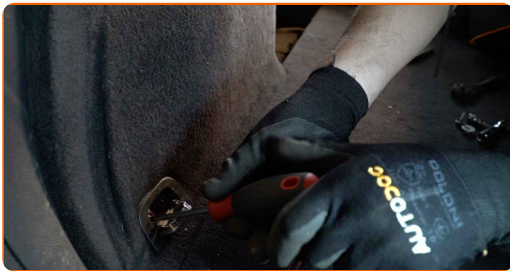
40

Install the boot front side lining. Install the lower clip of the boot front side lining.



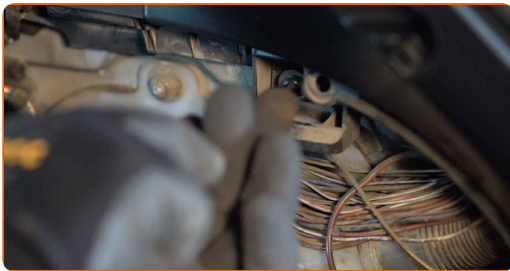
41

Screw the fasteners of the boot front side lining. Use a Phillips screwdriver.



42

Screw the side fasteners of the boot vent panel. Use a Phillips screwdriver.



43

Install the plastic clip of the boot front side lining.



44

Screw the upper fasteners of the boot vent panel. Use a drive socket #10. Use a ratchet wrench.



45

Screw the fasteners of the side plastic trim panel. Use Torx T25.



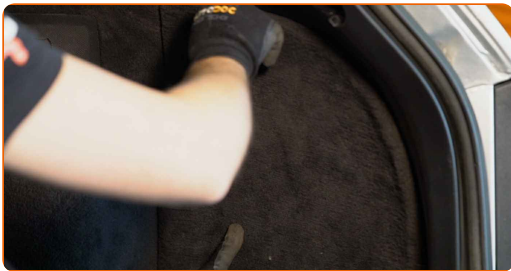
46

Install the seat belt trim cover.



47

Install the boot rear side lining.



48

Install the battery cover.



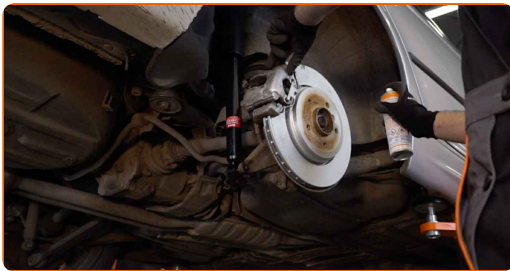
49 Return the seat to its original position.



50 Install the folding shelf to its mounting seat.



51 Clean the wheel rim mounting seat. Use a wire brush. Treat the contacting surface. Use copper grease.



52 Install the wheel.



Replacement: strut mount – BMW E46 touring. Professionals recommend:

- To avoid injury, hold up the wheel when screwing in the fastening bolts.

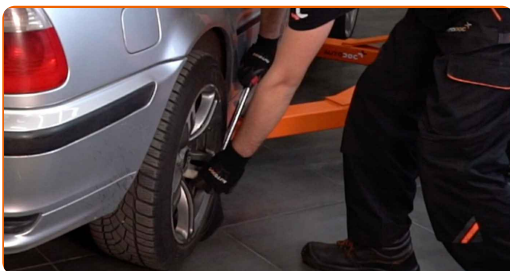
53

Screw in the wheel bolts. Use wheel impact socket #17.



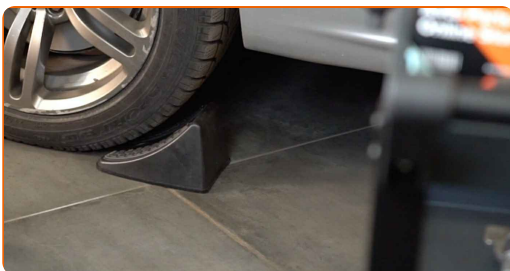
54

Lower the car and working in a cross order, tighten the wheel bolts. Use a torque wrench. Tighten it to 120 nm torque.



55

Remove the jacks and chocks.



WELL DONE! 👍

[VIEW MORE TUTORIALS](#)

AUTODOC – TOP QUALITY AND AFFORDABLE CAR PARTS ONLINE

AUTODOC MOBILE APP: GREAT DEALS AND CONVENIENT SHOPPING



The image shows two smartphones displaying the Autodoc mobile app. The left phone shows a search bar with the text '2-1 Pritsche (901, 902) 208 CDI (82 PS, B) ab ... 2.4 d engine', a search filter 'Search by item, by part number, by OEM', and a 'TODAY'S OFFERS' section featuring a tire and a filter. Below this is a 'Daily check' section and a 'CATEGORIES' section with items like 'Axel Mount', 'Steering Whe', and 'Spark, G'. The right phone shows the Autodoc logo and a collection of car parts including wheels, suspension components, and fluids.

AUTODOC

GET IT ON
Google Play

Download on the
App Store

Download

A GREAT SELECTION OF SPARE PARTS FOR YOUR CAR

BUY SPARE PARTS FOR BMW

STRUT MOUNT: A WIDE SELECTION

CHOOSE CAR PARTS FOR BMW E46 TOURING

STRUT MOUNT FOR BMW: BUY NOW

**STRUT MOUNT FOR BMW E46 TOURING: THE BEST DEALS
& OFFERS**

ⓘ DISCLAIMER:

The document contains only general recommendations that may be useful for you when you perform repair or replacement work. AUTODOC shall not be liable for any loss, injury, damage of property occurring in the repair or replacement process due to incorrect use or misinterpretation of the provided information.

AUTODOC shall not be liable for any possible mistakes and uncertainties in this guide. The information provided is for information purposes only and cannot replace advice from specialists.

AUTODOC shall not be liable for incorrect or hazardous usage of equipment, tools and car parts. AUTODOC strongly recommends to be careful and observe the safety rules when performing repair or replacement works. Remember: usage of low quality auto parts does not guarantee you the appropriate level of road safety.

© Copyright 2022 – All the contents of this website, in particular texts, photographs and graphics, are protected by copyright. All rights, including reproduction, publication, editing and translation rights, are reserved by AUTODOC GmbH.