



How to change rear
brake pad wear sensor on
BMW E46 Touring –
replacement guide

VIDEO TUTORIAL



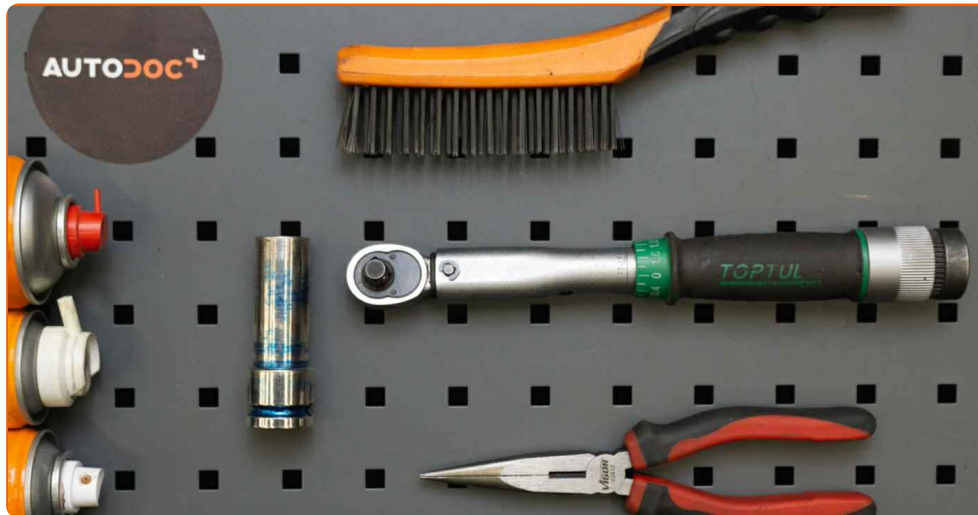
i Important!

This replacement procedure can be used for:

BMW 3 Saloon (E46) 318i 1.9, BMW 3 Saloon (E46) 328i 2.8, BMW 3 Saloon (E46) 320d 2.0, BMW 3 Saloon (E46) 323i 2.5, BMW 3 Saloon (E46) 320i 2.0, BMW 3 Coupe (E46) 323Ci 2.5, BMW 3 Coupe (E46) 328Ci 2.8, BMW 3 Saloon (E46) 316i 1.9, BMW 3 Touring (E46) 320i 2.0, BMW 3 Coupe (E46) 320Ci 2.0, BMW 3 Coupe (E46) 318Ci 1.9, BMW 3 Touring (E46) 318i 1.9, BMW 3 Touring (E46) 328i 2.8, BMW 3 Touring (E46) 320d 2.0, BMW 3 Saloon (E46) 330d 2.9, (+ 43)

The steps may slightly vary depending on the car design.

REPLACEMENT: BRAKE PAD WEAR SENSOR – BMW
E46 TOURING. TOOLS YOU'LL NEED:



- Wire brush
- Brake cleaner
- Electronic spray
- Copper grease
- Torque wrench
- Wheel impact socket #17
- Round-nose pliers
- Wheel chock

BUY TOOLS

Replacement: brake pad wear sensor – BMW E46 Touring. AUTODOC experts recommend:

- The replacement procedure is identical for both brake pad wear sensors on the same axle.
- Please note: all work on the car – BMW E46 Touring – should be done with the engine switched off.

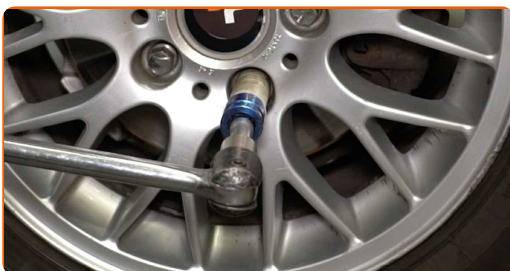
CARRY OUT REPLACEMENT IN THE FOLLOWING ORDER:

1 Open the bonnet. Unscrew the brake fluid reservoir cap.



2 Secure the wheels with chocks.

3 Loosen the wheel mounting bolts. Use wheel impact socket #17.

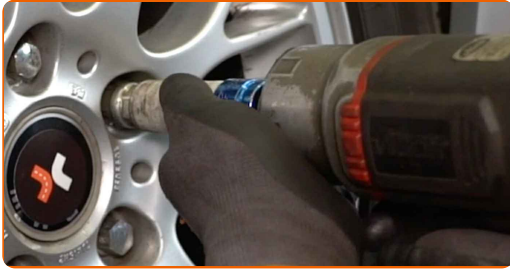


4 Lift the car using a jack or place it over an inspection pit.



5

Unscrew the wheel bolts.



AUTODOC recommends:

- Warning! To avoid injury, hold the wheel while unscrewing the fastening bolts.
BMW E46 Touring

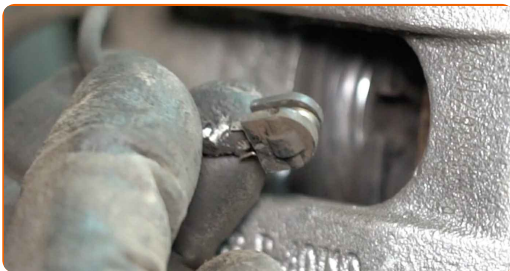
6

Remove the wheel.



7

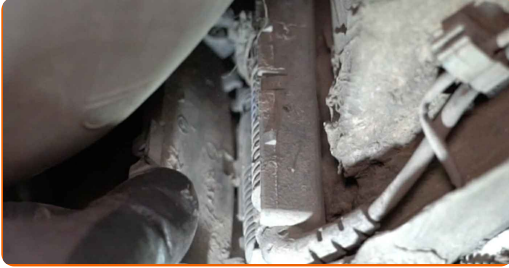
Remove the brake pad wear sensor from the brake pad. Use round-nose pliers.



8

Disconnect the brake pad wear sensor wire.

9 Open the cover of the wiring housing.



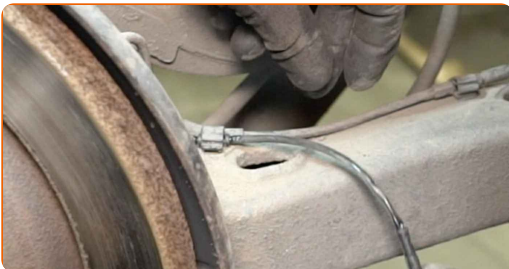
10 Detach the connector of the brake pad wear sensor.



11 Install the wear sensor on the brake pads. Use round-nose pliers.



12 Connect the brake pad wear sensor wire.



13 Treat the brake pad wear sensor plug. Use dielectric grease.



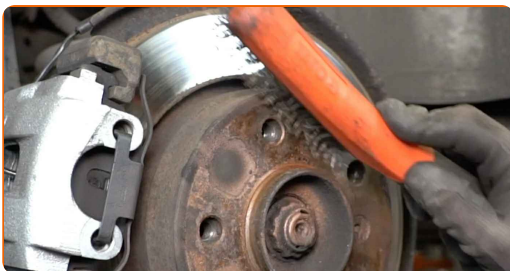
14 Attach the connector of the brake pad wear sensor.



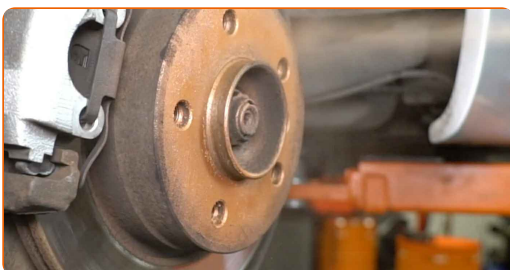
15 Close the wiring housing cover.



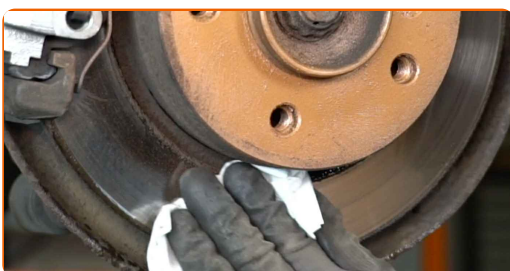
16 Clean the wheel rim mounting seat. Use a wire brush.



17 Treat the surface where the brake disc contacts the wheel rim. Use copper grease.



18 Clean the brake disk surface. Use a brake cleaner.



AUTODOC recommends:

- Replacement: brake pad wear sensor – BMW E46 Touring. After applying the spray, wait a few minutes.

19

Install the wheel.



AUTODOC recommends:

- Warning! To avoid injury, hold the wheel while screwing in the fastening bolts on the car. BMW E46 Touring

20

Screw in the wheel bolts. Use wheel impact socket #17.



21

Lower the car and working in a cross order, tighten the wheel bolts. Use wheel impact socket #17. Use a torque wrench. Tighten it to 120 Nm torque.



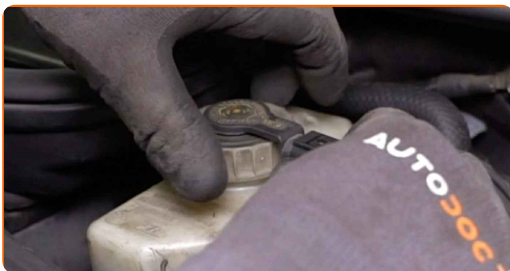
22

Remove the jacks and chocks.



23

Tighten the brake fluid reservoir cap. Close the hood.

**WELL DONE!** 👍[VIEW MORE TUTORIALS](#)

AUTODOC – TOP QUALITY AND AFFORDABLE CAR PARTS ONLINE

AUTODOC MOBILE APP: GREAT DEALS AND CONVENIENT SHOPPING

AUTODOC+

GET IT ON
Google Play

Download on the
App Store

Download

A GREAT SELECTION OF SPARE PARTS FOR YOUR CAR

BUY SPARE PARTS FOR BMW

BRAKE PAD WEAR SENSOR: A WIDE SELECTION

CHOOSE CAR PARTS FOR BMW E46 TOURING

BRAKE PAD WEAR SENSOR FOR BMW: BUY NOW

**BRAKE PAD WEAR SENSOR FOR BMW E46 TOURING: THE
BEST DEALS & OFFERS**

ⓘ DISCLAIMER:

The document contains only general recommendations that may be useful for you when you perform repair or replacement work. AUTODOC shall not be liable for any loss, injury, damage of property occurring in the repair or replacement process due to incorrect use or misinterpretation of the provided information.

AUTODOC shall not be liable for any possible mistakes and uncertainties in this guide. The information provided is for information purposes only and cannot replace advice from specialists.

AUTODOC shall not be liable for incorrect or hazardous usage of equipment, tools and car parts. AUTODOC strongly recommends to be careful and observe the safety rules when performing repair or replacement works. Remember: usage of low quality auto parts does not guarantee you the appropriate level of road safety.

© Copyright 2021 – All the contents of this website, in particular texts, photographs and graphics, are protected by copyright. All rights, including reproduction, publication, editing and translation rights, are reserved by AUTODOC GmbH.