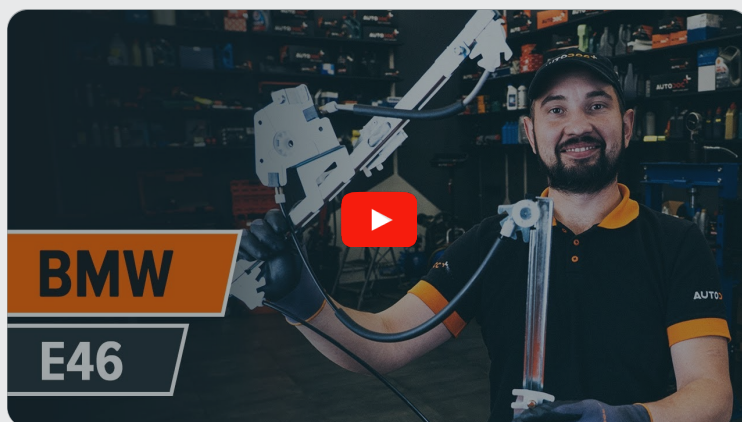




How to change front  
window regulator on  
**BMW E46 Touring** –  
replacement guide

## VIDEO TUTORIAL

** Important!**

This replacement procedure can be used for:

BMW 3 Saloon (E46) 318i 1.9, BMW 3 Saloon (E46) 328i 2.8, BMW 3 Saloon (E46) 320d 2.0, BMW 3 Saloon (E46) 323i 2.5, BMW 3 Saloon (E46) 320i 2.0, BMW 3 Coupe (E46) 323Ci 2.5, BMW 3 Coupe (E46) 328Ci 2.8, BMW 3 Saloon (E46) 316i 1.9, BMW 3 Touring (E46) 320i 2.0, BMW 3 Coupe (E46) 318Ci 1.9, BMW 3 Touring (E46) 318i 1.9, BMW 3 Touring (E46) 328i 2.8, BMW 3 Saloon (E46) 330d 2.9, BMW 3 Touring (E46) 330d 2.9, BMW 3 Convertible (E46) 323Ci 2.5, (+ 43)

The steps may slightly vary depending on the car design.

REPLACEMENT: WINDOW REGULATOR – BMW E46  
TOURING. TOOLS YOU'LL NEED:



- Electronic spray
- Torque wrench
- Drive socket # 8
- Drive socket # 10
- Torx bit T25
- Torx bit T30
- Ratchet wrench
- Plastic trim tool
- Round-nose pliers

**BUY TOOLS**

Replacement: window regulator – BMW E46 Touring. AUTODOC experts recommend:

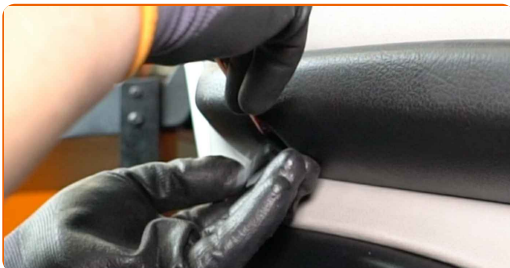
- All work should be done with the engine stopped.

## REPLACEMENT: WINDOW REGULATOR – BMW E46 TOURING. USE THE FOLLOWING PROCEDURE:

**1** Open the car door.



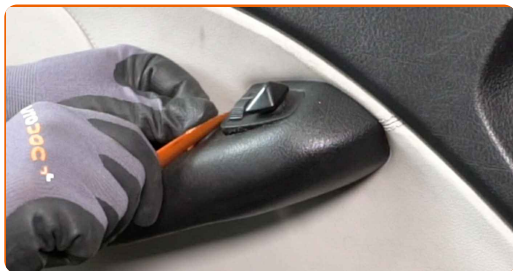
**2** Remove the caps from the door armrest fasteners. Use a plastic trim tool.



AUTODOC recommends:

- Replacement: window regulator – BMW E46 Touring. Do not use excessive force when removing the part as this may damage it.

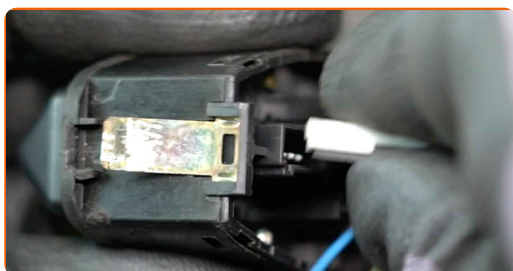
**3** Disconnect the wing mirror control module. Use a plastic trim tool.



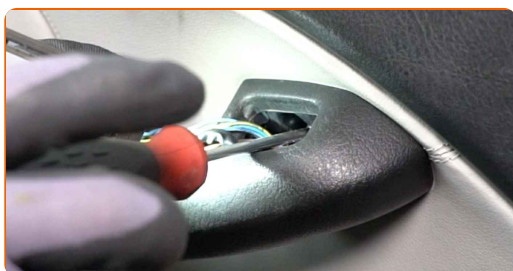
**AUTODOC recommends:**

- Replacement: window regulator – BMW E46 Touring. To avoid damaging the part when removing it, do not use excessive force.

**4** Disconnect the wing mirror control connectors.



**5** Unscrew the door handle fastener. Use Torx T25.



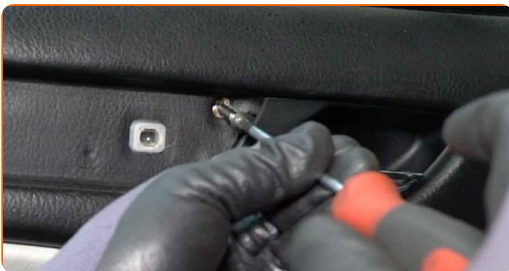
**6** Remove the door card trim panel. Use a plastic trim tool.



Replacement: window regulator – BMW E46 Touring. Tip from AUTODOC experts:

- Do not apply excessive force when removing the part. Otherwise you may damage it.

**7** Unscrew the door card fasteners. Use Torx T25.



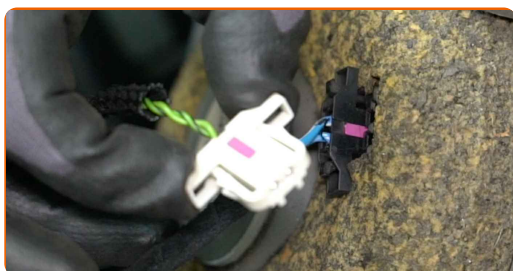
**8** Detach the door card. Use a plastic trim tool.



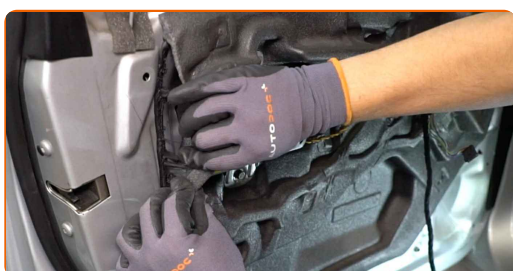
**9** Detach the door lock actuator cable.



- 10** Disconnect the audio system speaker connectors. Disconnect the wing mirror control connectors from the door card.



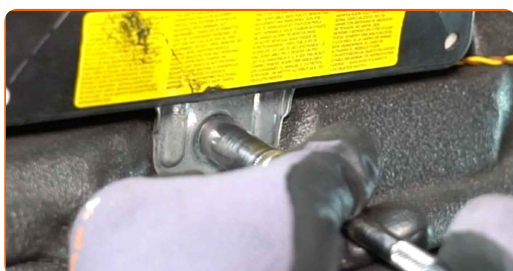
- 11** Detach the door panel sound insulation.



**AUTODOC recommends:**

- Do not apply excessive force when removing the part. Otherwise you may damage it.

- 12** Unscrew the SRS control module fasteners. Use a drive socket #10. Use a ratchet wrench.



- 13** Remove the SRS module.

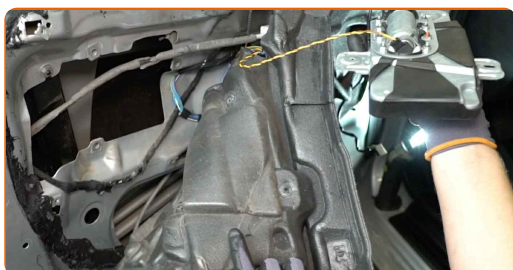


**AUTODOC recommends:**

- Do not apply excessive force when removing the part. Otherwise you may damage it.

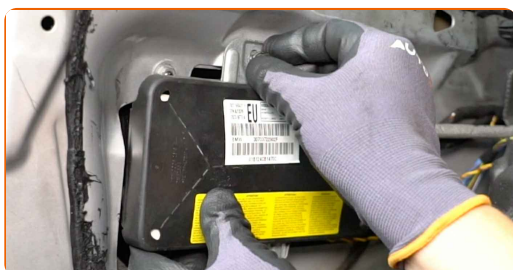
**14**

Detach the door panel sound insulation.



**15**

Install the SRS module.



**AUTODOC recommends:**

- Replacement: window regulator – BMW E46 Touring. To avoid damaging the part during installation, do not use excessive force.

**16**

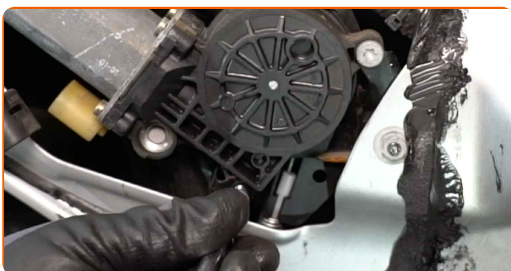
Screw in the SRS module fasteners. Use a drive socket #10. Use a ratchet wrench.



**17** Disconnect the power window module connector.



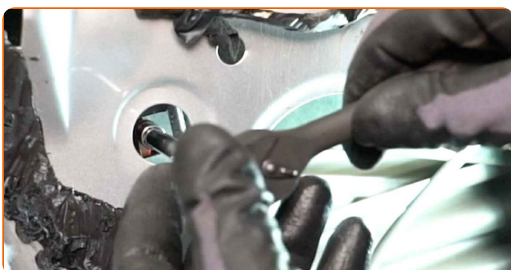
**18** Unscrew the fasteners of the power window module. Use Torx T30. Use a ratchet wrench.



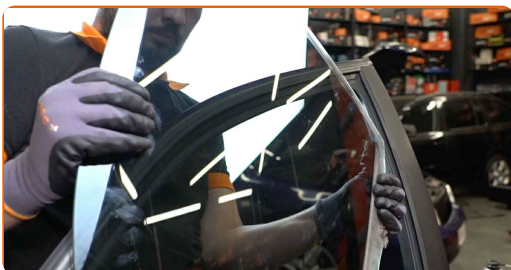
**19** Remove the power window switch module.



**20** Unscrew the window glass fasteners. Use a drive socket #8. Use a ratchet wrench.



**21** Raise the glass a little and remove it.

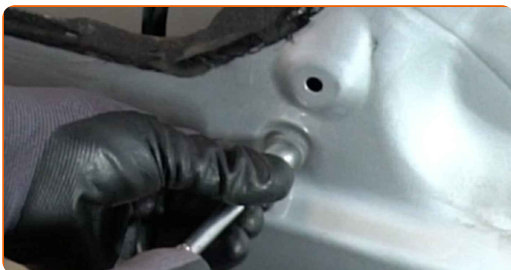


Replacement: window regulator – BMW E46 Touring. Professionals recommend:

- To avoid injury, hold the glass when raising it.
- Do not apply excessive force when removing the part. Otherwise you may damage it.

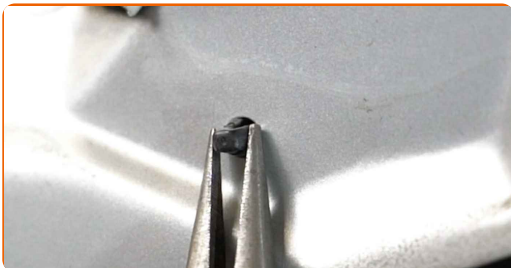
22

Unscrew the fasteners of the window regulator assembly. Use a drive socket #10. Use a ratchet wrench.



23

Squeeze the retainer of the window regulator actuator to release and disconnect it. Use round-nose pliers.



24

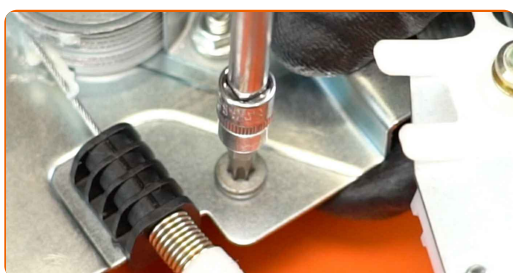
Remove the window regulator actuator.



**25** Install the power window switch module.



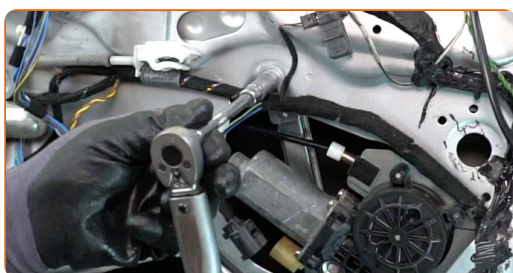
**26** Tighten the fasteners of the power window module. Use Torx T30. Use a torque wrench. Tighten it to 11 Nm torque.



**27** Attach the window regulator drive gear.

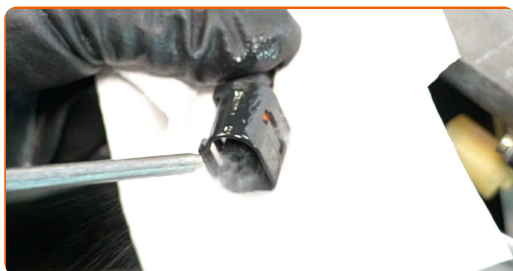


**28** Tighten the fasteners of the window regulator assembly. Use a drive socket #10. Use a torque wrench. Tighten it to 11 Nm torque.

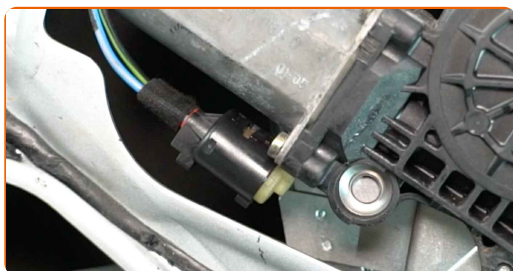


**29** Attach the retainer of the window regulator actuator.

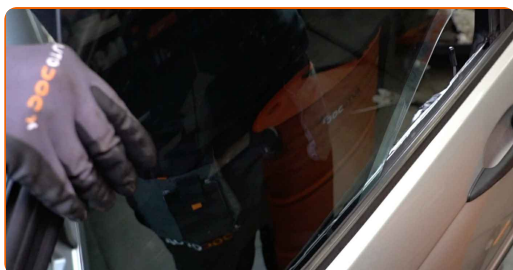
**30** Treat the power window module connector. Use dielectric grease.



**31** Connect the power window module connector.



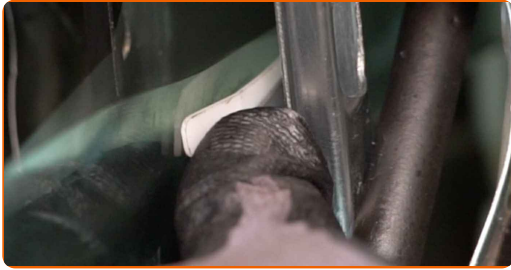
**32** Lower the window glass and install it to its mounting seat in the window raiser mechanism.



**AUTODOC recommends:**

- To avoid injury, hold the glass when lowering it.
- Replacement: window regulator – BMW E46 Touring. Do not use excessive force during installation. This may damage the part.

**33** Install the retainers of the window glass fasteners.



**34** Unscrew the SRS control module fasteners. Use a drive socket #10. Use a ratchet wrench.



**35** Remove the SRS module.



**Replacement: window regulator – BMW E46 Touring. Tip from AUTODOC experts:**

- Do not apply excessive force when removing the part. Otherwise you may damage it.

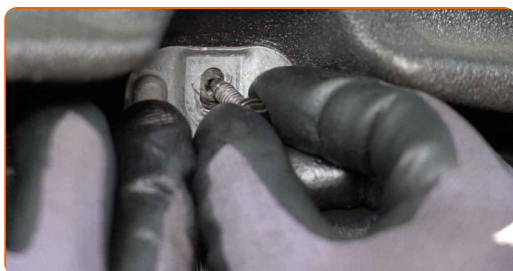
**36** Attach the door panel sound insulation.



Replacement: window regulator – BMW E46 Touring. AUTODOC experts recommend:

- Check that the sound insulation fits snugly on the mounting seats.

**37** Install the SRS module.



AUTODOC recommends:

- When installing, do not use excessive force to avoid damage to the part.

**38** Tighten the SRS module fasteners. Use a drive socket #10. Use a torque wrench. Tighten it to 8 Nm torque.



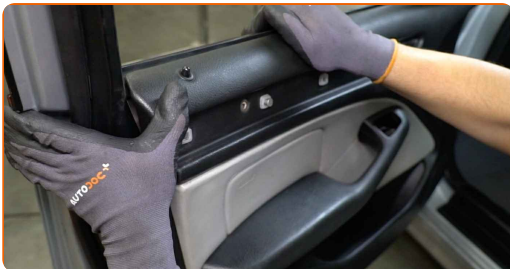
**39** Connect the audio system speaker connectors. Connect the wing mirror control connectors to the door card.



**40** Attach the door lock actuator cable.



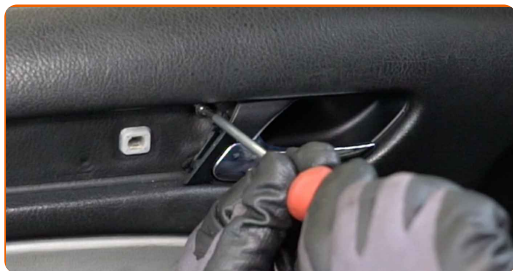
**41** Reinstall the door card. Make sure you hear a click indicating that it is locked in place.



**Replacement: window regulator – BMW E46 Touring. Tip from AUTODOC experts:**

- When installing, do not use excessive force to avoid damage to the part.

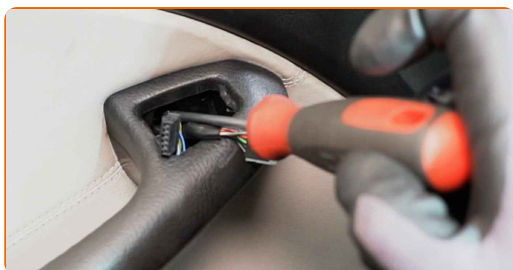
**42** Screw in the door card fasteners. Use Torx T25.



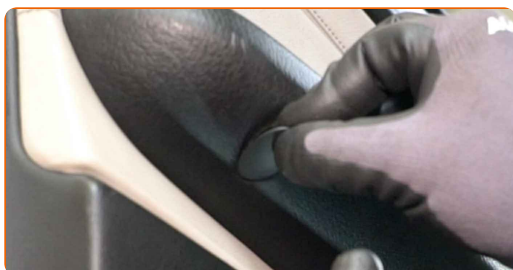
**43** Install the door card trim panel.



**44** Screw in the door handle fastener. Use Torx T25.



**45** Install the caps on the door armrest fasteners.



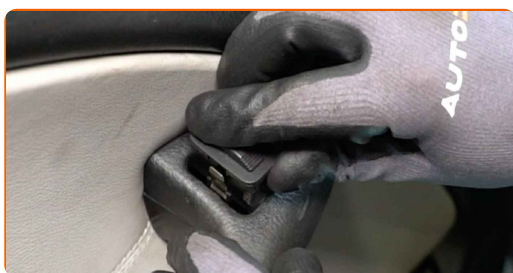
**46** Treat the wing mirror control connectors. Use dielectric grease.



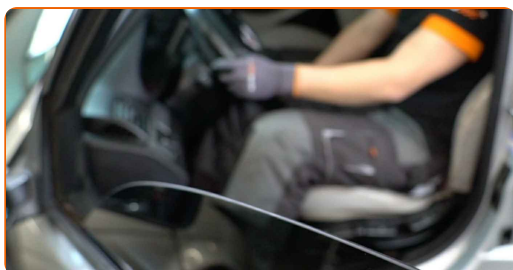
**47** Connect the wing mirror control connectors.



**48** Connect the wing mirror control module.

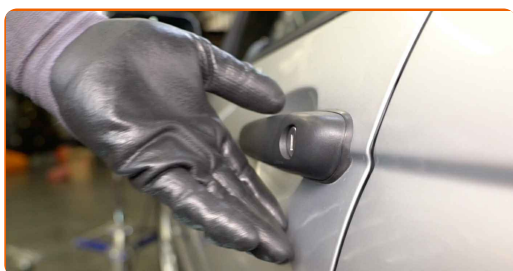


**49** Switch on the ignition. This is necessary in order to make sure that the component operates properly.



**50** Switch off the ignition.

**51** Close the car door.



**WELL DONE!** 

**VIEW MORE TUTORIALS**

# AUTODOC – TOP QUALITY AND AFFORDABLE CAR PARTS ONLINE

**AUTODOC MOBILE APP: GREAT DEALS AND CONVENIENT SHOPPING**



**+ AUTODOC**

GET IT ON  
**Google Play**

Download on the  
**App Store**

**Download**

**A GREAT SELECTION OF SPARE PARTS FOR YOUR CAR**

**BUY SPARE PARTS FOR BMW**

**WINDOW REGULATOR: A WIDE SELECTION**

**CHOOSE CAR PARTS FOR BMW E46 TOURING**

**WINDOW REGULATOR FOR BMW: BUY NOW**

**WINDOW REGULATOR FOR BMW E46 TOURING: THE BEST DEALS & OFFERS**

### **DISCLAIMER:**

The document contains only general recommendations that may be useful for you when you perform repair or replacement work. AUTODOC shall not be liable for any loss, injury, damage of property occurring in the repair or replacement process due to incorrect use or misinterpretation of the provided information.

AUTODOC shall not be liable for any possible mistakes and uncertainties in this guide. The information provided is for information purposes only and cannot replace advice from specialists.

AUTODOC shall not be liable for incorrect or hazardous usage of equipment, tools and car parts. AUTODOC strongly recommends to be careful and observe the safety rules when performing repair or replacement works. Remember: usage of low quality auto parts does not guarantee you the appropriate level of road safety.

© Copyright 2022 – All the contents of this website, in particular texts, photographs and graphics, are protected by copyright. All rights, including reproduction, publication, editing and translation rights, are reserved by AUTODOC GmbH.