



How to change fuel filter
on **BMW E46**
convertible –
replacement guide

VIDEO TUTORIAL



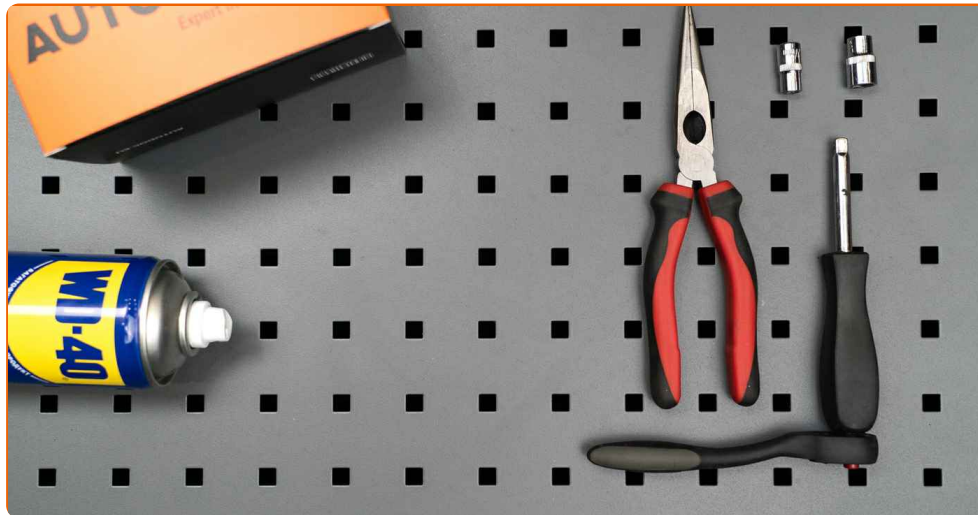
Important!

This replacement procedure can be used for:

BMW 3 Coupe (E36) 316i 1.6, BMW 3 Saloon (E46) 318i 1.9, BMW 3 Saloon (E46) 316i 1.9, BMW 3 Coupe (E46) 318Ci 1.9, BMW 3 Touring (E46) 318i 1.9, BMW 3 Saloon (E46) 330xi 3.0, BMW 3 Touring (E46) 330xi 3.0, BMW 3 Coupe (E46) 330xi 3.0, BMW 3 Saloon (E46) 330i 3.0, BMW 3 Touring (E46) 330i 3.0, BMW Z3 Roadster (E36) 3.0 i, BMW Z3 Coupe (E36) 3.0 i, BMW 3 Convertible (E46) 330Ci 3.0, BMW Z3 Roadster (E36) 2.2 i, BMW 3 Coupe (E46) 320Ci 2.2, (+ 23)

The steps may slightly vary depending on the car design.

REPLACEMENT: FUEL FILTER – BMW E46
CONVERTIBLE. TOOLS YOU MIGHT NEED:



- WD-40 spray
- Round-nose pliers
- Fluid container
- Drive socket # 7
- Drive socket # 10
- Ratchet wrench

BUY TOOLS

Replacement: fuel filter – BMW E46 convertible. AUTODOC recommends:

- Ensure adequate ventilation of the workplace. Fuel vapors are poisonous.
- All work should be done with the engine stopped.

REPLACEMENT: FUEL FILTER – BMW E46 CONVERTIBLE. USE THE FOLLOWING PROCEDURE:

1

Open the fuel door.



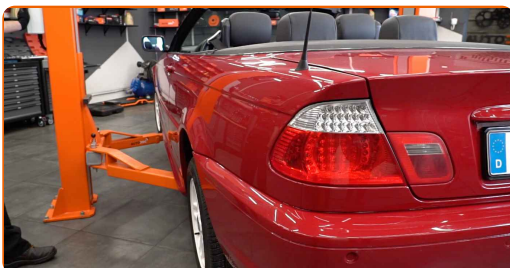
2

Unscrew the fuel filler cap.



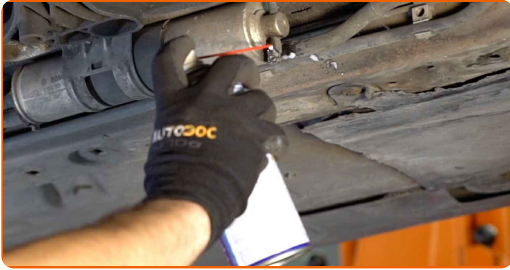
3

Lift the car using a jack or place it over an inspection pit.



4

Treat the fasteners attaching the tubes to the fuel filter. Use WD-40 spray.



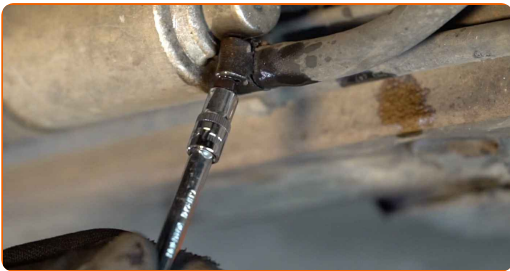
5

Prepare a container for fluids.



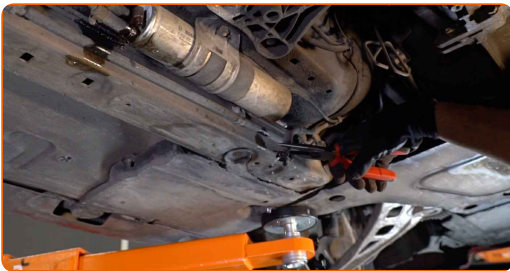
6

Loosen the fastening clamps of the fuel filter pipes. Use a drive socket #7. Use a ratchet wrench.



7

Detach the tubes from the fuel filter. Use round-nose pliers.



Replacement: fuel filter – BMW E46 convertible. Tip from AUTODOC experts:

- Be careful! Fuel may leak from the filter housing and hoses.

8 Loosen the fuel filter mounting. Use a drive socket #10. Use a ratchet wrench.



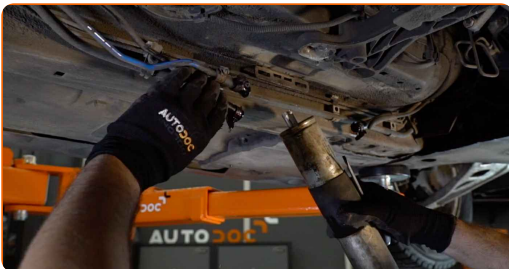
9 Remove the fuel filter fastening bracket.



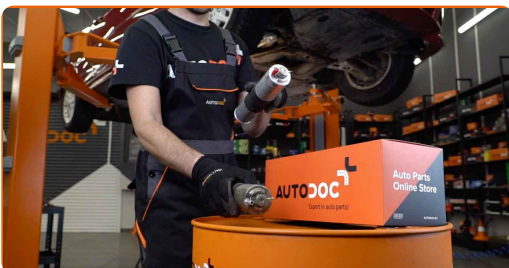
10 Detach the tubes from the fuel filter. Use round-nose pliers.



11 Remove the fuel filter. Put the old filter cartridge in the container.



12 Install a new fuel filter.



Replacement: fuel filter – BMW E46 convertible. Tip from AUTODOC:

- Make sure that the fuel filter is positioned correctly. Consider the fuel flow direction mark.
- During installation, take care to prevent dust and dirt from getting into the fuel filter housing.
- BMW E46 convertible – It's important to only use high-quality filters.

13

Attach the tubes to the fuel filter.



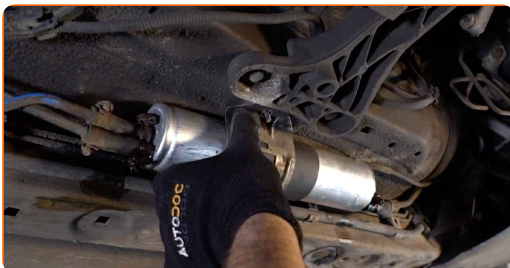
14

Tighten the fastening clamps of the fuel filter pipes. Use a drive socket #7. Use a ratchet wrench.



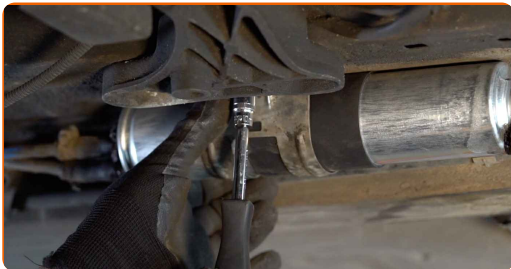
15

Install the fuel filter fastening bracket.



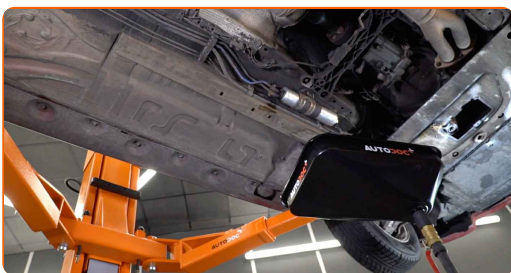
16

Tighten the fuel filter fasteners. Use a drive socket #10. Use a ratchet wrench.



17

Take the fluid container away from under the fuel filter.



18

Lower the car.



19

Tighten the fuel filler cap.



20

Close the fuel door.



Replacement: fuel filter – BMW E46 convertible. Tip:

- Before starting off, switch the ignition on and off several times. This should be done to activate the fuel pump to make it pump fuel through the fuel system.

21 Run the engine for a few minutes. This is necessary in order to make sure that the component operates properly.



22 Shut off the engine.



Replacement: fuel filter – BMW E46 convertible. AUTODOC recommends:

- To protect the environment from pollution, be sure to dispose of the used filters at special collection points.

WELL DONE! 

[VIEW MORE TUTORIALS](#)

AUTODOC – TOP QUALITY AND AFFORDABLE CAR PARTS ONLINE

AUTODOC MOBILE APP: GREAT DEALS AND CONVENIENT SHOPPING

AUTODOC+

GET IT ON
Google Play

Download on the
App Store

Download

A GREAT SELECTION OF SPARE PARTS FOR YOUR CAR

BUY SPARE PARTS FOR BMW

FUEL FILTER: A WIDE SELECTION

CHOOSE CAR PARTS FOR BMW E46 CONVERTIBLE

FUEL FILTER FOR BMW: BUY NOW

**FUEL FILTER FOR BMW E46 CONVERTIBLE: THE BEST
DEALS & OFFERS**

DISCLAIMER:

The document contains only general recommendations that may be useful for you when you perform repair or replacement work. AUTODOC shall not be liable for any loss, injury, damage of property occurring in the repair or replacement process due to incorrect use or misinterpretation of the provided information.

AUTODOC shall not be liable for any possible mistakes and uncertainties in this guide. The information provided is for information purposes only and cannot replace advice from specialists.

AUTODOC shall not be liable for incorrect or hazardous usage of equipment, tools and car parts. AUTODOC strongly recommends to be careful and observe the safety rules when performing repair or replacement works. Remember: usage of low quality auto parts does not guarantee you the appropriate level of road safety.

© Copyright 2021 – All the contents of this website, in particular texts, photographs and graphics, are protected by copyright. All rights, including reproduction, publication, editing and translation rights, are reserved by AUTODOC GmbH.