



How to change front
brake discs on **BMW E36**
– replacement guide

VIDEO TUTORIAL



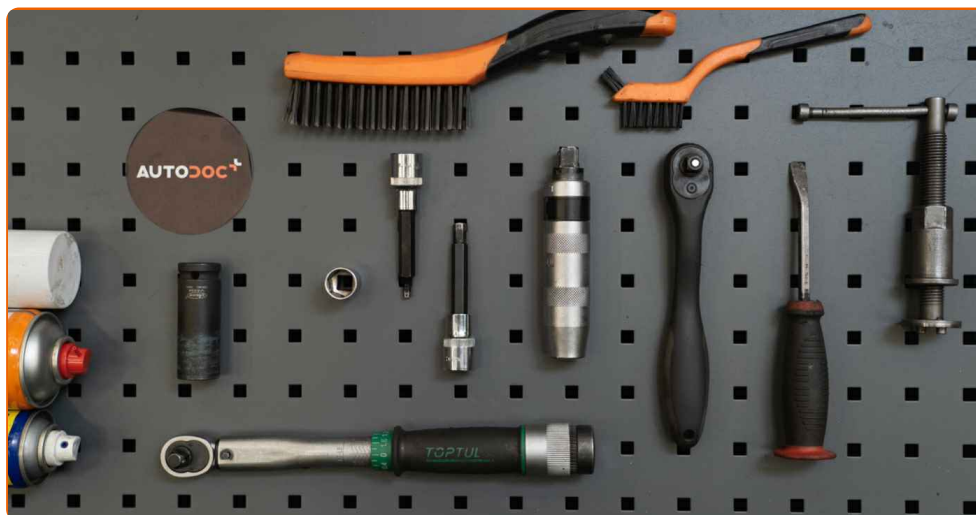
Important!

This replacement procedure can be used for:

BMW 3 Saloon (E36) 318i 1.8, BMW 3 Saloon (E36) 318is 1.8, BMW 3 Coupe (E36) 318is 1.8, BMW 3 Saloon (E36) 320i 2.0, BMW 3 Coupe (E36) 320i 2.0, BMW 3 Saloon (E36) 325i 2.5, BMW 3 Coupe (E36) 325i 2.5, BMW 3 Saloon (E36) 325td 2.5, BMW 3 Saloon (E36) 325tds 2.5, BMW 3 Convertible (E36) 320i 2.0, BMW 3 Convertible (E36) 325i 2.5, BMW 3 Touring (E36) 320i 2.0, BMW 3 Touring (E36) 328i 2.8, BMW 3 Touring (E36) 325tds 2.5, BMW 3 Saloon (E36) 328i 2.8, (+ 53)

The steps may slightly vary depending on the car design.

REPLACEMENT: BRAKE DISCS – BMW E36. TOOLS YOU MIGHT NEED:



- Wire brush
- Nylon cleaning brush
- WD-40 spray
- Brake cleaner
- Copper grease
- Torque wrench
- Drive socket # 16
- HEX bit No.H5
- HEX bit No.H7
- Wheel impact socket #17
- Ratchet wrench
- Tap wrench
- Impact screwdriver
- Brake caliper wind back tool
- Crow bar
- Wheel chock

BUY TOOLS

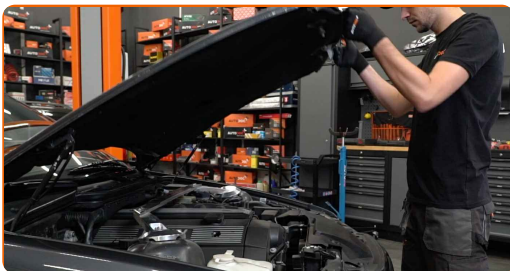
AUTODOC recommends:

- Replace the brake disks on the car BMW E36 in complete set for each axis. Regardless of the state of components. This will ensure even braking.
- The replacement procedure is identical for both brake disks on the same axle.
- When changing the brake discs, always replace the brake pads.
- Please note: all work on the car – BMW E36 – should be done with the engine switched off.

CARRY OUT REPLACEMENT IN THE FOLLOWING ORDER:

1

Open the hood. Unscrew the brake fluid reservoir cap.



2

Secure the wheels with chocks.

3

Loosen the wheel mounting bolts. Use wheel impact socket #17.



4 Raise the front of the car and secure on supports.



5 Unscrew the wheel bolts.



AUTODOC recommends:

- Warning! To avoid injury, hold the wheel while unscrewing the fastening bolts.
BMW E36

6 Remove the wheel.

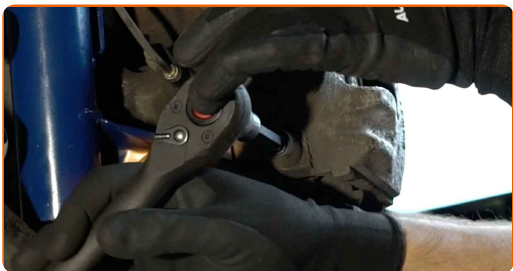


7 Remove the dust boot caps of the brake caliper guide pins. Use a crowbar.

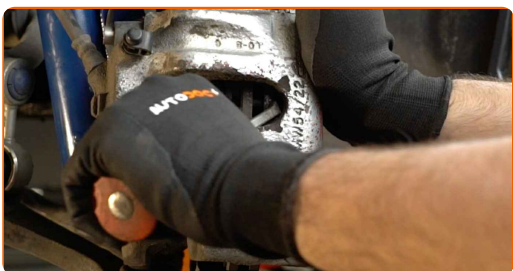


8

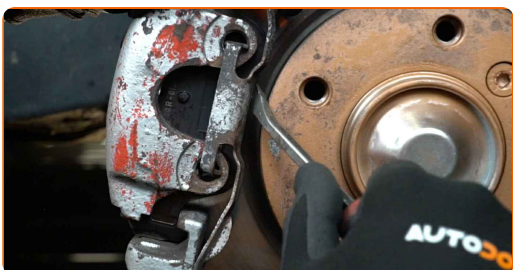
Unscrew the brake caliper fastening. Use HEX No.H7. Use a ratchet wrench.

**9**

Spread the brake pads. Use a crowbar.

**10**

Detach the brake caliper retaining spring. Use a crowbar.

**11**

Remove the brake caliper.

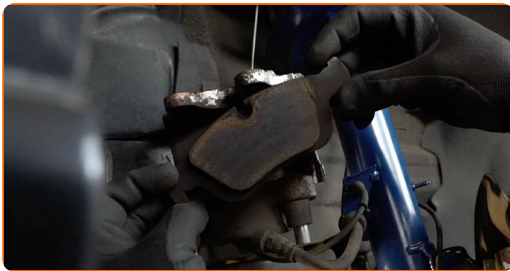


Replacement: brake discs – BMW E36. Tip from AUTODOC experts:

- Tie the caliper to the suspension or to the body with a wire without disconnecting from the brake hose to prevent depressurization of the brake system.
- Make sure that the brake caliper is not hanging on the brake hose.
- Don't press the brake pedal after the brake caliper has been removed. As a result, the piston can fall out from the brake cylinder, and brake fluid leakage and depressurization of the system may occur.
- Check the brake caliper bracket, brake caliper guide pins and boots. Clean them. Replace, if necessary.

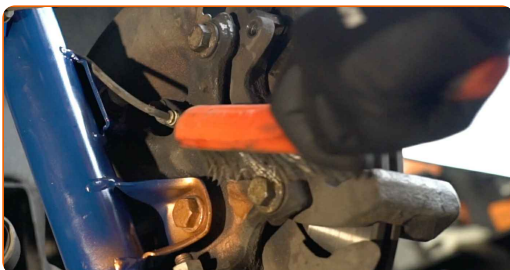
12

Remove the brake pads.



13

Clean the brake caliper bracket fasteners. Use a wire brush. Use WD-40 spray.



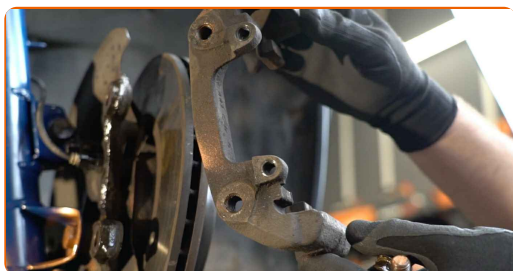
14

Unscrew the caliper bracket fastening. Use a drive socket #16. Use a tap wrench.



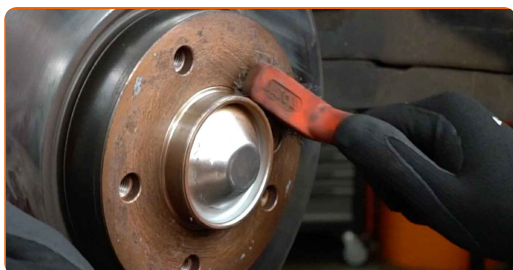
15

Remove the caliper bracket.



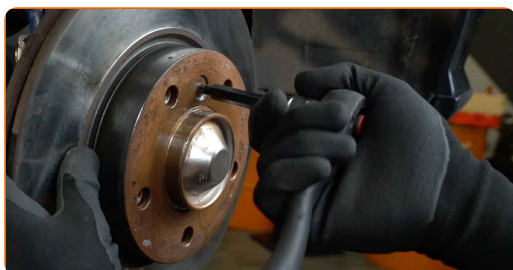
16

Clean the brake disc fastener. Use a wire brush. Use WD-40 spray.



17

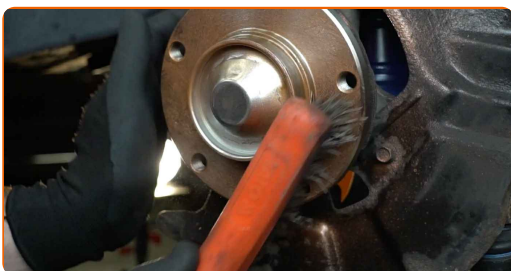
Unscrew the brake disc fastening. Use HEX No.H5. Use an impact screwdriver.



18 Remove the brake disc.



19 Clean the hub. Use a wire brush. Treat the contacting surface. Use copper grease.



20 Install the brake disc.



21 Tighten the brake disc fastening. Use HEX No.H5. Use a torque wrench. Tighten it to 9 Nm torque.



22

Clean the brake caliper bracket from dirt and dust. Use a wire brush. Use a brake cleaner.

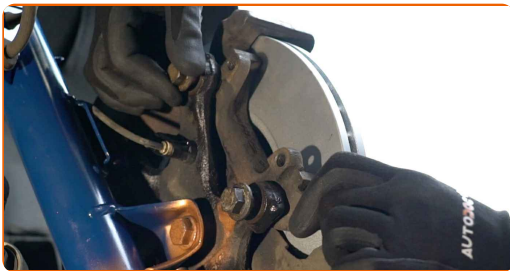


AUTODOC recommends:

- Replacement: brake discs – BMW E36. After applying the spray, wait a few minutes.

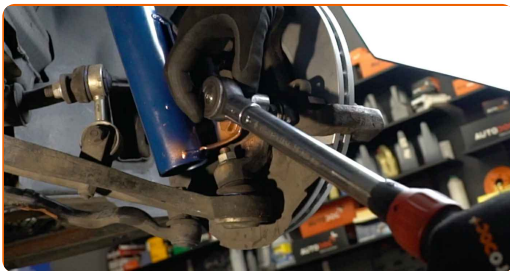
23

Install the brake caliper bracket.



24

Tighten the brake caliper bracket. Use a drive socket #16. Use a torque wrench. Tighten it to 110 Nm torque.



25

Treat the brake caliper piston. Use a nylon cleaning brush. Use a brake cleaner.



Replacement: brake discs – BMW E36. Professionals recommend:

- After applying the spray, wait a few minutes.

26

Press in the brake caliper piston. Use brake caliper wind back tool.



27

Install the brake pads.

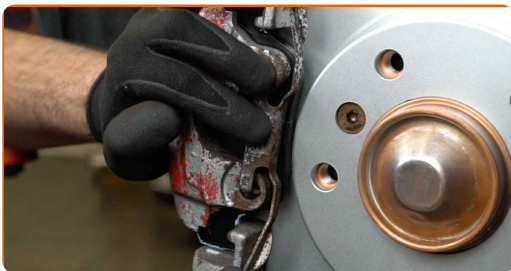


28

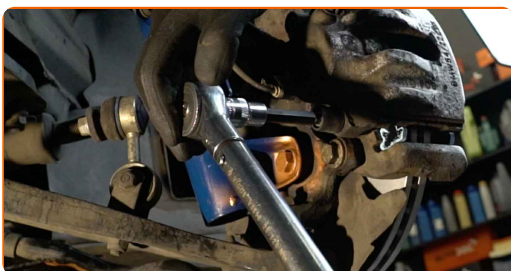
Install the brake caliper and fix it.



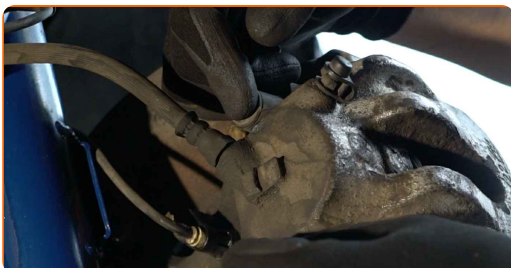
29 Install the brake caliper retaining spring.



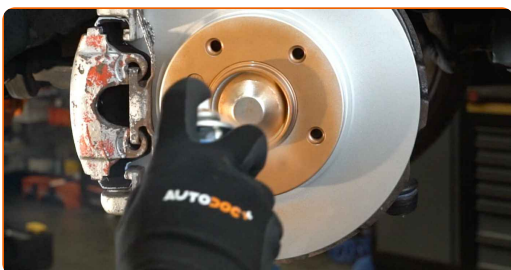
30 Tighten the brake caliper fasteners. Use HEX No.H7. Use a torque wrench. Tighten it to 30 Nm torque.



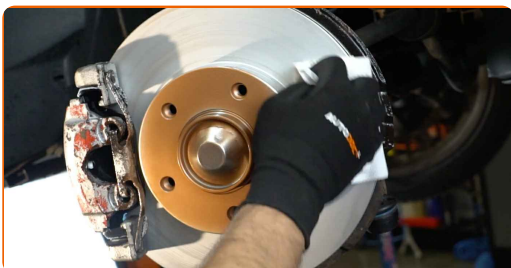
31 Install the dust boot caps of the brake caliper guide pins.



32 Treat the surface where the brake disc contacts the wheel rim. Use copper grease.



33 Clean the brake disk surface. Use a brake cleaner.



AUTODOC recommends:

- Replacement: brake discs – BMW E36. After applying the spray, wait a few minutes.

34

Install the wheel.



AUTODOC recommends:

- Warning! To avoid injury, hold the wheel while screwing in the fastening bolts on the car. BMW E36

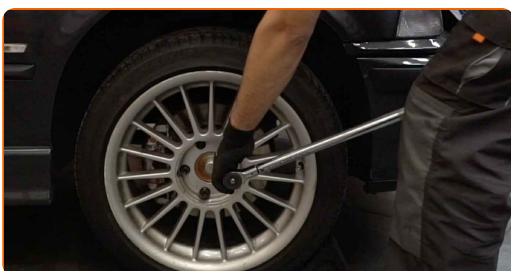
35

Screw in the wheel bolts. Use wheel impact socket #17.



36

Lower the car and working in a cross order, tighten the wheel bolts. Use wheel impact socket #17. Use a torque wrench. Tighten it to 120 Nm torque.



37

Remove the jacks and chocks.



Replacement: brake discs – BMW E36. AUTODOC recommends:

- Without starting the engine, press the brake pedal several times until you feel significant resistance.
- Check the brake fluid level in the expansion tank and refill if necessary.

38

Tighten the brake fluid reservoir cap. Close the hood.



WELL DONE! 

VIEW MORE TUTORIALS

AUTODOC – TOP QUALITY AND AFFORDABLE CAR PARTS ONLINE

AUTODOC MOBILE APP: GREAT DEALS AND CONVENIENT SHOPPING



+ AUTODOC

GET IT ON **Google Play**

Download on the **App Store**

Download

A GREAT SELECTION OF SPARE PARTS FOR YOUR CAR

BUY SPARE PARTS FOR BMW

BRAKE DISCS: A WIDE SELECTION

CHOOSE CAR PARTS FOR BMW E36

BRAKE DISCS FOR BMW: BUY NOW

BRAKE DISCS FOR BMW E36: THE BEST DEALS & OFFERS

DISCLAIMER:

The document contains only general recommendations that may be useful for you when you perform repair or replacement work. AUTODOC shall not be liable for any loss, injury, damage of property occurring in the repair or replacement process due to incorrect use or misinterpretation of the provided information.

AUTODOC shall not be liable for any possible mistakes and uncertainties in this guide. The information provided is for information purposes only and cannot replace advice from specialists.

AUTODOC shall not be liable for incorrect or hazardous usage of equipment, tools and car parts. AUTODOC strongly recommends to be careful and observe the safety rules when performing repair or replacement works. Remember: usage of low quality auto parts does not guarantee you the appropriate level of road safety.

© Copyright 2022 – All the contents of this website, in particular texts, photographs and graphics, are protected by copyright. All rights, including reproduction, publication, editing and translation rights, are reserved by AUTODOC GmbH.