



How to change pollen
filter on **Ford Focus MK2**
– replacement guide

VIDEO TUTORIAL



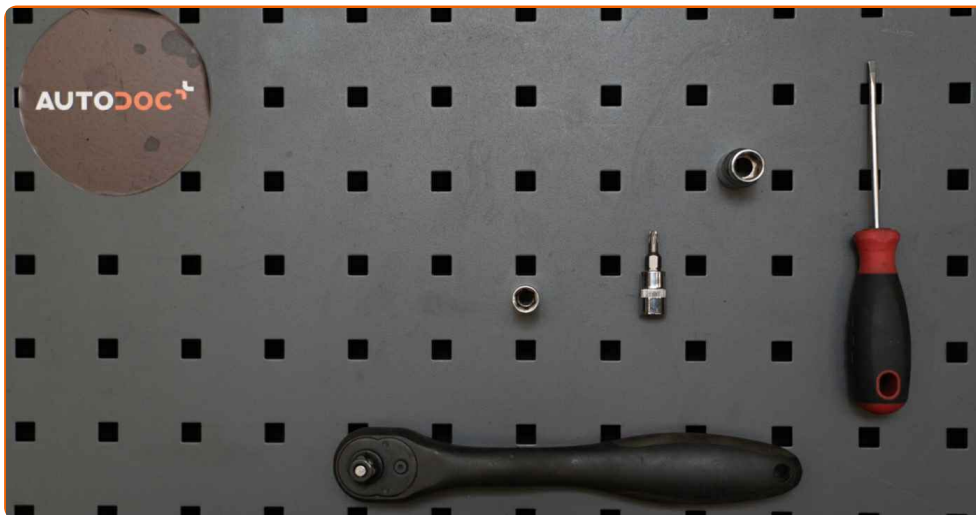
Important!

This replacement procedure can be used for:

FORD Focus II Estate (DA_, FFS, DS) 1.6 TDCi, FORD Focus II Estate (DA_, FFS, DS) 2.0 TDCi, FORD Focus II Hatchback (DA_, HCP, DP) 1.6 TDCi, FORD Focus II Hatchback (DA_, HCP, DP) 2.0 TDCi, FORD Focus II Hatchback (DA_, HCP, DP) 1.6, FORD Focus II Saloon (DB_, FCH, DH) 1.6, FORD Focus II Saloon (DB_, FCH, DH) 1.6 TDCi, FORD Focus II Hatchback (DA_, HCP, DP) 1.6 Ti, FORD Focus II Hatchback (DA_, HCP, DP) 2.0, FORD Focus II Hatchback (DA_, HCP, DP) 1.4, FORD Focus II Estate (DA_, FFS, DS) 1.4, FORD Focus II Estate (DA_, FFS, DS) 1.6, FORD Focus II Estate (DA_, FFS, DS) 1.6 Ti, FORD Focus II Estate (DA_, FFS, DS) 2.0, FORD Focus II Hatchback (DA_, HCP, DP) 1.8 TDCi, (+ 31)

The steps may slightly vary depending on the car design.

REPLACEMENT: POLLEN FILTER – FORD FOCUS MK2.
TOOLS YOU MIGHT NEED:



- Torx bit T20
- Drive socket # 8
- Drive socket # 10
- Ratchet wrench
- Flat Screwdriver

BUY TOOLS

Replacement: pollen filter – Ford Focus MK2. AUTODOC recommends:

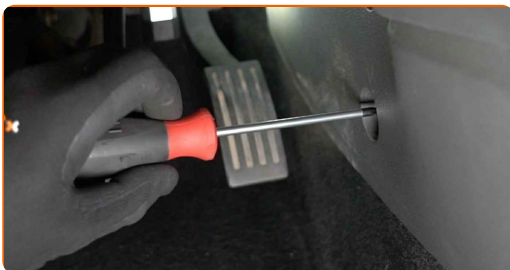
- Replace the cabin filter at least once every six months, in early spring and autumn seasons.
- Follow the terms, recommendations and requirements of the part operation provided by the manufacturer.
- If the air flow into the cabin has sharply reduced, replace the filter before a scheduled maintenance.
- All work should be done with the engine stopped.

**REPLACEMENT: POLLEN FILTER – FORD FOCUS MK2.
RECOMMENDED SEQUENCE OF STEPS:**

1 Remove the caps from the fasteners of the plastic side panel. Use a flat screwdriver.



2 Unscrew the fasteners of the side plastic trim panel. Use Torx T20.

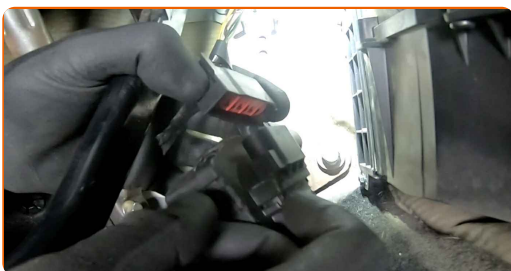


3 Remove the side plastic cover.

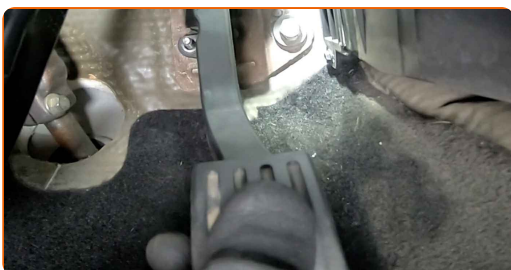
4 Unscrew the fastener of the accelerator pedal and move it aside. Use a drive socket #10. Use a ratchet wrench.



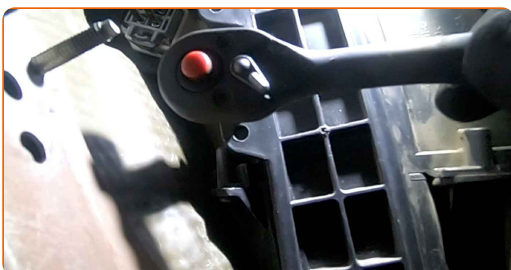
5 Detach the accelerator pedal connector.



6 Remove the accelerator pedal.



7 Unscrew the fasteners of the cabin filter housing cover. Use a drive socket #8. Use a ratchet wrench.



8 Remove the cabin filter housing cover.



AUTODOC recommends:

- Replacement: pollen filter – Ford Focus MK2. Do not use excessive force when removing the part as this may damage it.

9 Remove the cabin filter.



Replacement: pollen filter – Ford Focus MK2. AUTODOC recommends:

- Do not attempt to clean and reuse the filter - it will affect the quality of air cleaning inside the car.

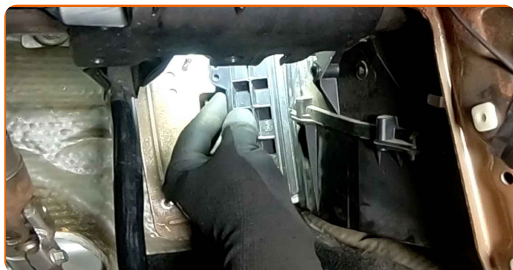
10 Install the cabin filter to its mounting seat.



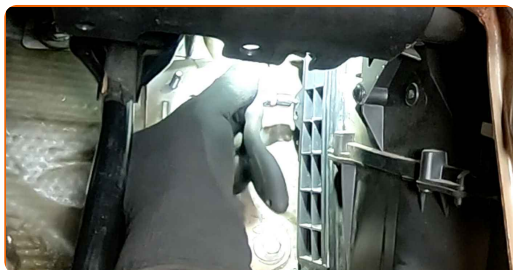
Replacement: pollen filter – Ford Focus MK2. AUTODOC experts recommend:

- Check out the correct location of the filter element. Do not skew.
- Follow the air flow direction arrow on the filter.
- Ford Focus MK2 – It's important to only use high-quality filters.

11 Reinstall the cabin filter housing cover.



12 Screw in the fasteners of the cabin filter housing cover. Use a drive socket #8. Use a ratchet wrench.



13 Attach the accelerator pedal connector.



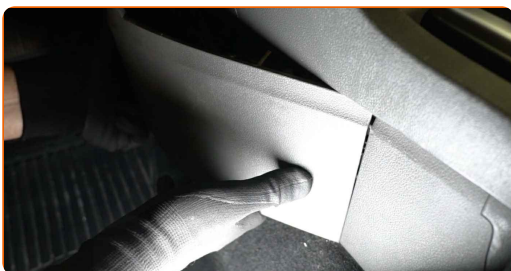
14 Reinstall the accelerator pedal.



15 Return the accelerator pedal to its initial position and screw in its fastener. Use a drive socket #10. Use a ratchet wrench.

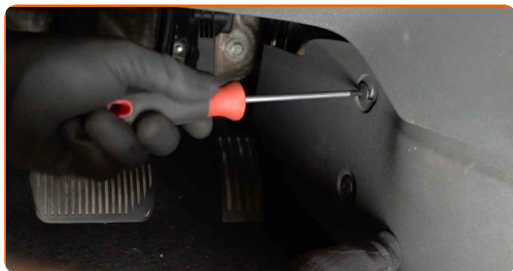


16 Install the side plastic panel.



17

Screw the fasteners of the side plastic trim panel. Use Torx T20.



18

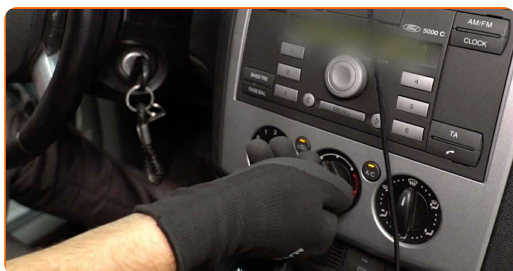
Reinstall the caps on the fasteners of the plastic side panel.

19

Switch on the ignition.

20

Switch on the air conditioning system. This is necessary in order to make sure that the component operates properly.



21

Switch off the ignition.



WELL DONE! 

VIEW MORE TUTORIALS

AUTODOC – TOP QUALITY AND AFFORDABLE CAR PARTS ONLINE

AUTODOC MOBILE APP: GREAT DEALS AND CONVENIENT SHOPPING



+ AUTODOC

GET IT ON  **Google Play**

 **Download on the App Store**

Download

A GREAT SELECTION OF SPARE PARTS FOR YOUR CAR

BUY SPARE PARTS FOR FORD

POLLEN FILTER: A WIDE SELECTION

CHOOSE CAR PARTS FOR FORD FOCUS MK2

POLLEN FILTER FOR FORD: BUY NOW

POLLEN FILTER FOR FORD FOCUS MK2: THE BEST DEALS & OFFERS

DISCLAIMER:

The document contains only general recommendations that may be useful for you when you perform repair or replacement work. AUTODOC shall not be liable for any loss, injury, damage of property occurring in the repair or replacement process due to incorrect use or misinterpretation of the provided information.

AUTODOC shall not be liable for any possible mistakes and uncertainties in this guide. The information provided is for information purposes only and cannot replace advice from specialists.

AUTODOC shall not be liable for incorrect or hazardous usage of equipment, tools and car parts. AUTODOC strongly recommends to be careful and observe the safety rules when performing repair or replacement works. Remember: usage of low quality auto parts does not guarantee you the appropriate level of road safety.

© Copyright 2023 – All the contents of this website, in particular texts, photographs and graphics, are protected by copyright. All rights, including reproduction, publication, editing and translation rights, are reserved by AUTODOC SE.