



How to change rear
suspension lower control
arm on **Ford Focus MK2**
– replacement guide

VIDEO TUTORIAL



i Important!

This replacement procedure can be used for:

FORD FOCUS (DAW, DBW) 1.4 16V, FORD FOCUS (DAW, DBW) 1.6 16V, FORD FOCUS (DAW, DBW) 1.8 16V, FORD FOCUS Saloon (DFW) 1.4 16V, FORD FOCUS Saloon (DFW) 1.6 16V, FORD FOCUS Saloon (DFW) 1.8 16V, FORD FOCUS Estate (DNW) 1.4 16V, FORD FOCUS Estate (DNW) 1.6 16V, FORD FOCUS Estate (DNW) 1.8 16V, FORD FOCUS (DAW, DBW) 2.0 16V, FORD FOCUS (DAW, DBW) 1.8 Turbo DI / TDDi, FORD FOCUS Saloon (DFW) 2.0 16V, FORD FOCUS Saloon (DFW) 1.8 Turbo DI / TDDi, FORD FOCUS Estate (DNW) 2.0 16V, FORD FOCUS Estate (DNW) 1.8 Turbo DI / TDDi, (+ 51)

The steps may slightly vary depending on the car design.

REPLACEMENT: REAR SUSPENSION LOWER CONTROL ARM – FORD FOCUS MK2. TOOLS YOU NEED:



- Wire brush
- WD-40 spray
- Copper grease
- Drive socket # 15
- Wheel impact socket #19
- Ratchet wrench
- Torque wrench
- Tap wrench
- Crow bar
- Hydraulic transmission jack
- Wheel chock

BUY TOOLS

Replacement: rear suspension lower control arm – Ford Focus MK2. Professionals recommend:

- The replacement procedure is identical for the left and right lower control arms.
- All work should be done with the engine stopped.

REPLACEMENT: REAR SUSPENSION LOWER CONTROL ARM – FORD FOCUS MK2. RECOMMENDED SEQUENCE OF STEPS:

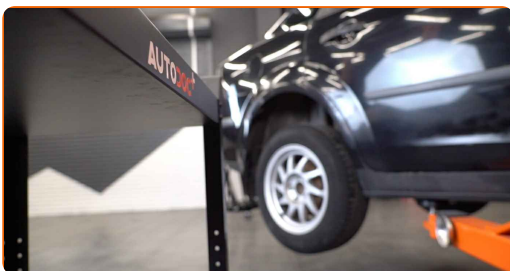
1 Secure the wheels with chocks.



2 Loosen the wheel mounting bolts. Use wheel impact socket #19.



3 Raise the rear of the car and secure on supports.



4 Unscrew the wheel bolts.

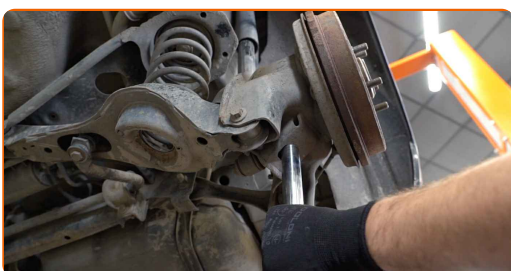
AUTODOC recommends:

- Important! Hold the wheel while unscrewing the fastening bolts. Ford Focus MK2

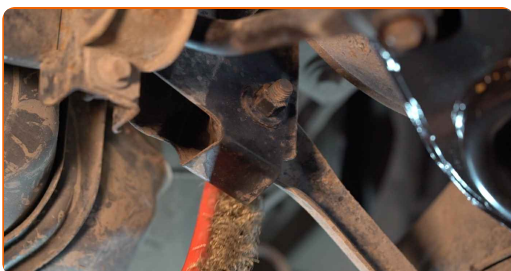
5 Remove the wheel.



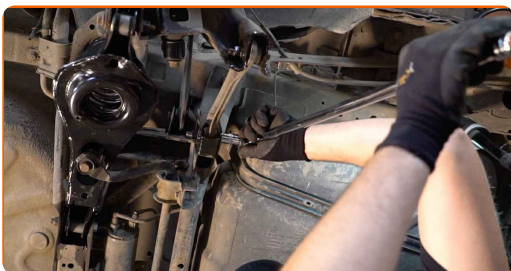
6 Support the arm. Use a hydraulic transmission jack.



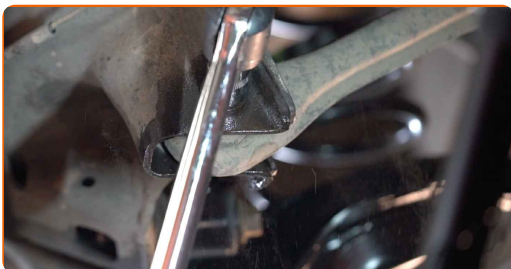
7 Clean the control arm fasteners. Use a wire brush. Use WD-40 spray.



- 8 Unscrew the arm fastening to the beam. Use a drive socket #15. Use a ratchet wrench. Use a tap wrench. Remove the fastening bolt.

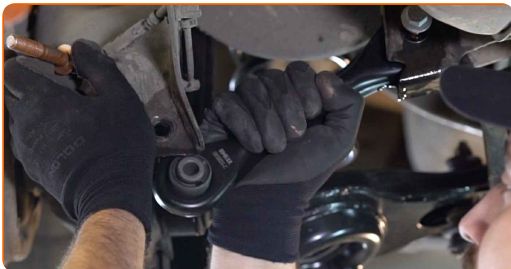


- 9 Unscrew the fastener connecting the control arm to the rear knuckle. Use a drive socket #15. Use a ratchet wrench. Remove the fastening bolt.



- 10 Remove the arm.

- 11 Install a new suspension arm.



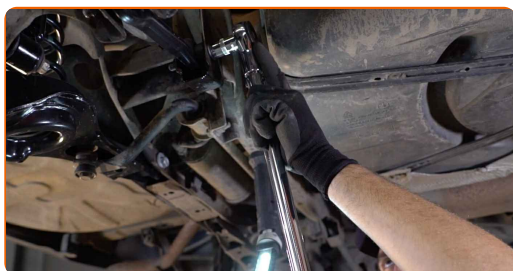
- 12 Install the control arm fasteners. Use a crowbar.



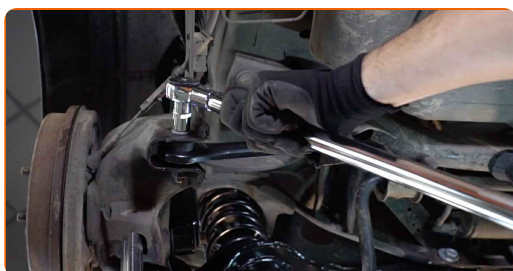
- 13** Support the arm. Use a hydraulic transmission jack.



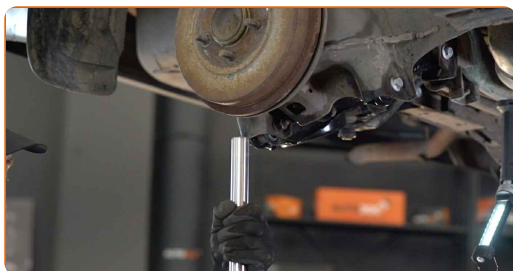
- 14** Tighten the arm fastening to the beam. Use a drive socket #15. Use a torque wrench. Tighten it to 115 Nm torque.



- 15** Tighten the fasteners connecting the control arm to the rear knuckle. Use a drive socket #15. Use a torque wrench. Tighten it to 115 Nm torque.



- 16** Remove the support from under the rear arm.



AUTODOC recommends:

- Replacement: rear suspension lower control arm – Ford Focus MK2. Lower the transmission jack smoothly, without jerks, to avoid damaging components and mechanisms.

17

Clean the wheel rim mounting seat. Use a wire brush. Treat the contacting surface. Use copper grease.



18

Install the wheel.



Replacement: rear suspension lower control arm – Ford Focus MK2. AUTODOC recommends:

- To avoid injury, hold up the wheel when screwing in the fastening bolts.

19

Screw in the wheel bolts. Use wheel impact socket #19.



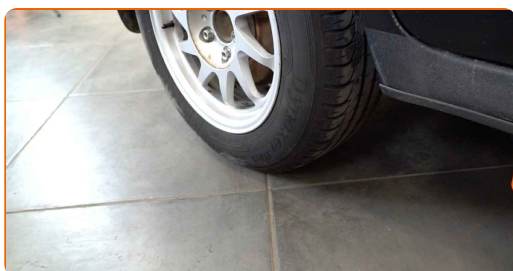
20

Lower the car and working in a cross order, tighten the wheel bolts. Use a torque wrench. Tighten it to 110 Nm torque.



21

Remove the jacks and chocks.



WELL DONE! 

VIEW MORE TUTORIALS

AUTODOC – TOP QUALITY AND AFFORDABLE CAR PARTS ONLINE

AUTODOC MOBILE APP: GREAT DEALS AND CONVENIENT SHOPPING



+ AUTODOC

GET IT ON
Google Play

Download on the
App Store

Download

A GREAT SELECTION OF SPARE PARTS FOR YOUR CAR

BUY SPARE PARTS FOR FORD

CONTROL ARM: A WIDE SELECTION

CHOOSE CAR PARTS FOR FORD FOCUS MK2

CONTROL ARM FOR FORD: BUY NOW

CONTROL ARM FOR FORD FOCUS MK2: THE BEST DEALS & OFFERS

DISCLAIMER:

The document contains only general recommendations that may be useful for you when you perform repair or replacement work. AUTODOC shall not be liable for any loss, injury, damage of property occurring in the repair or replacement process due to incorrect use or misinterpretation of the provided information.

AUTODOC shall not be liable for any possible mistakes and uncertainties in this guide. The information provided is for information purposes only and cannot replace advice from specialists.

AUTODOC shall not be liable for incorrect or hazardous usage of equipment, tools and car parts. AUTODOC strongly recommends to be careful and observe the safety rules when performing repair or replacement works. Remember: usage of low quality auto parts does not guarantee you the appropriate level of road safety.

© Copyright 2023 – All the contents of this website, in particular texts, photographs and graphics, are protected by copyright. All rights, including reproduction, publication, editing and translation rights, are reserved by AUTODOC SE.