



How to change front  
lower arm on **Renault**  
**Twingo C06** –  
replacement guide

## VIDEO TUTORIAL

** Important!**

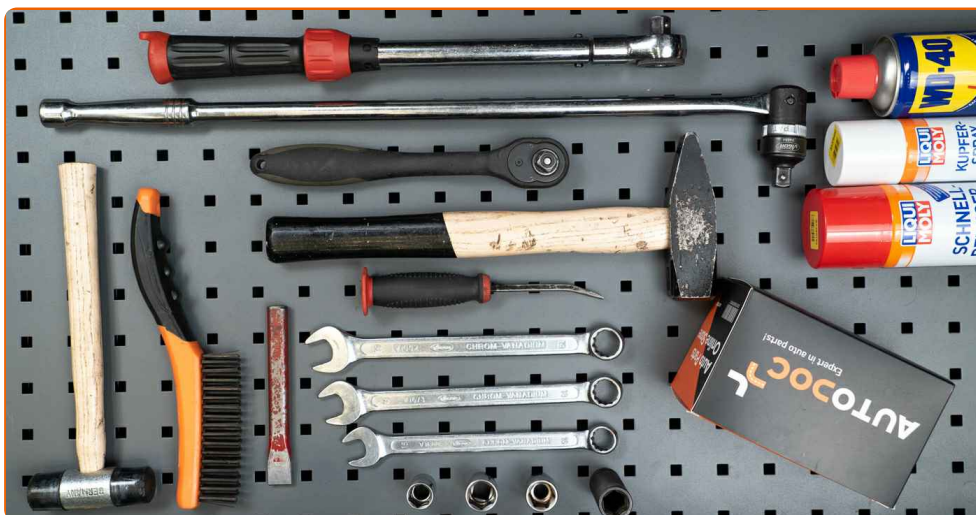
This replacement procedure can be used for:

RENAULT Twingo I Hatchback 1.2, RENAULT Twingo I Van 1.2, RENAULT Twingo I Hatchback 1.2 16V

---

The steps may slightly vary depending on the car design.

**REPLACEMENT: FRONT LOWER ARM – RENAULT TWINGO C06. LIST OF THE TOOLS YOU'LL NEED:**



- Wire brush
- WD-40 spray
- Brake cleaner
- Copper grease
- Combination spanner #16
- Combination spanner #18
- Combination spanner #19
- Drive socket # 16
- Drive socket # 18
- Drive socket # 19
- Wheel impact socket #17
- Torque wrench
- Tap wrench
- Hammer
- Flat chisel
- Crow bar
- Rubber mallet
- Hydraulic transmission jack
- Wheel chock

**BUY TOOLS**

Replacement: front lower arm – Renault Twingo C06. AUTODOC experts recommend:

- The replacement procedure is identical for the left and right lower control arms.
- All work should be done with the engine stopped.

## REPLACEMENT: FRONT LOWER ARM – RENAULT TWINGO C06. TAKE THE FOLLOWING STEPS:

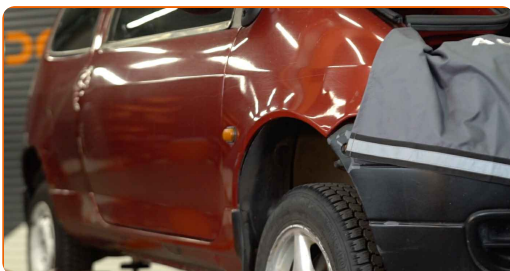
**1** Secure the wheels with chocks.



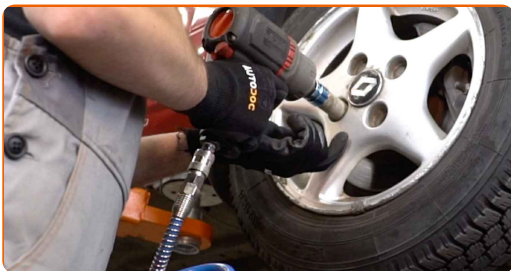
**2** Loosen the wheel mounting bolts. Use wheel impact socket #17.



**3** Raise the front of the car and secure on supports.



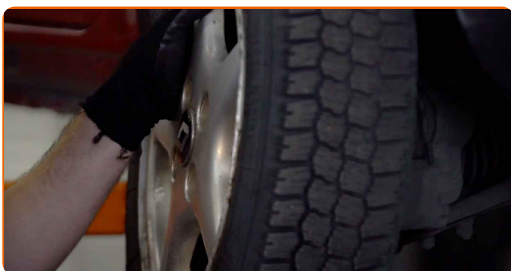
**4** Unscrew the wheel bolts.



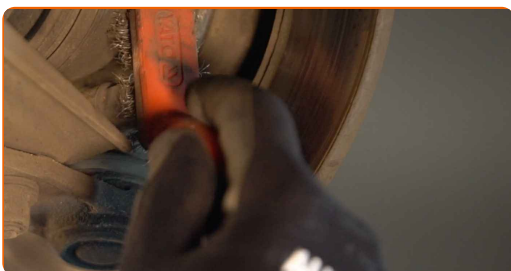
**AUTODOC recommends:**

- To avoid injury, hold up the wheel when unscrewing the bolts.

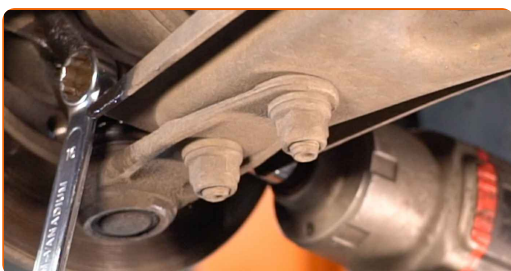
**5** Remove the wheel.



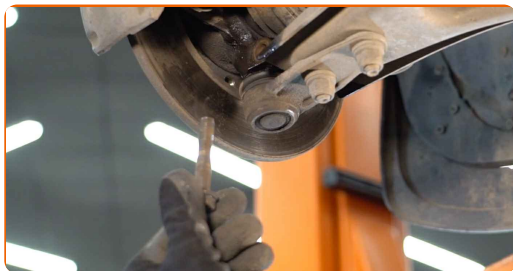
**6** Clean all joints of the arm. Use a wire brush. Use WD-40 spray.



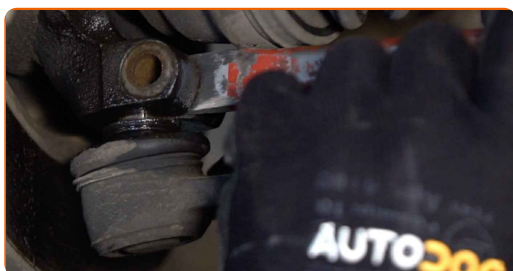
**7** Unscrew the fastener connecting the ball joint to the suspension control arm. Use a combination spanner #16. Use a drive socket #16.



**8** Remove the fastening bolt. Use a rubber mallet.



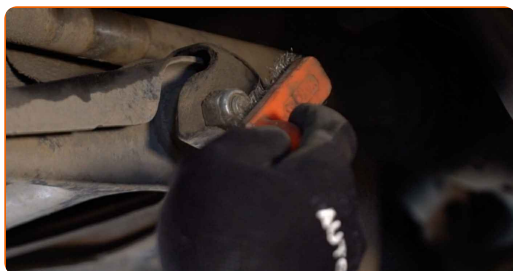
**9** Release the fastener that connects the control arm ball joint to the steering knuckle. Use a flat metal-working chisel. Use a hammer.



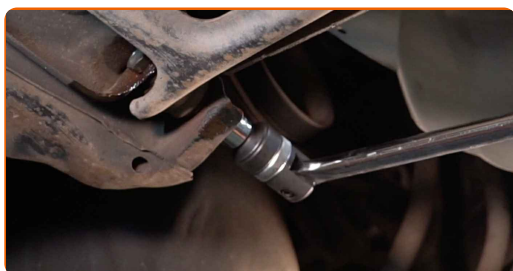
**10** Disconnect the lower arm from the steering knuckle.



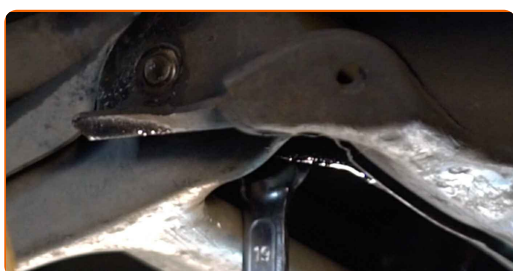
**11** Clean all joints of the arm. Use a wire brush. Use WD-40 spray.



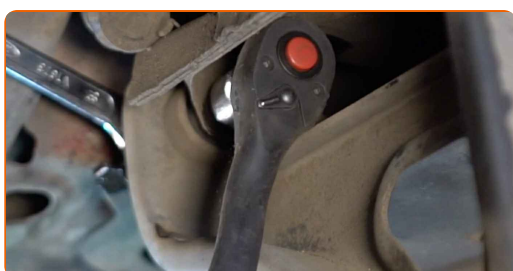
- 12 Loosen the front fastener of the control arm. Use a combination spanner #18. Use a drive socket #18. Use a tap wrench.



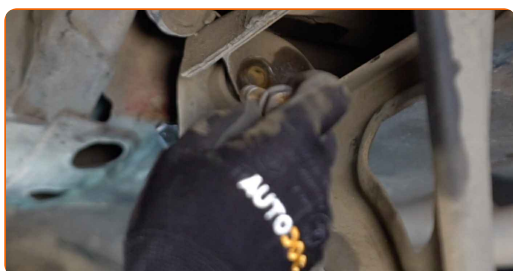
- 13 Remove the fastening bolt.



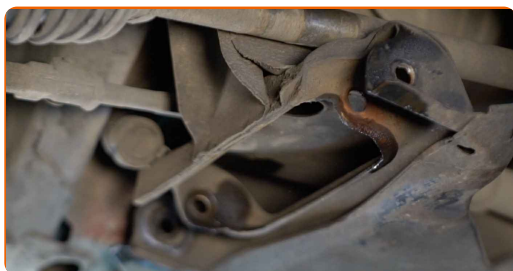
- 14 Unscrew the rear arm fastener. Use a combination spanner #19. Use a drive socket #19. Use a tap wrench.



- 15 Remove the fastening bolt.



- 16 Remove the arm. Use a crowbar.





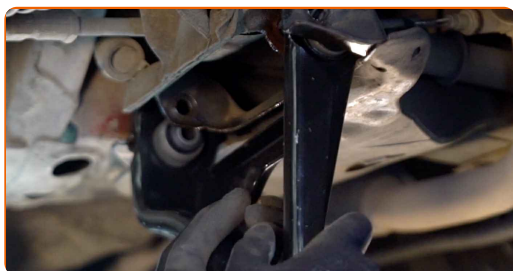
17

Clean the mounting seats and the thread of the suspension arm. Use a wire brush. Use WD-40 spray.



18

Install a new arm.



Replacement: front lower arm – Renault Twingo C06. Professionals recommend:

- During the installation process, use only new bolts and nuts.
- Do not damage the ball joint cover.

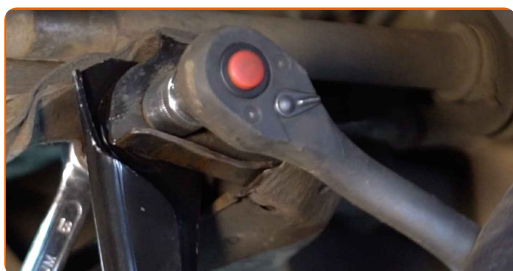
19

Install the fastening bolts.





- 20 Screw the rear fastener connecting the control arm to the subframe. Use a combination spanner #19. Use a drive socket #19. Use a tap wrench.



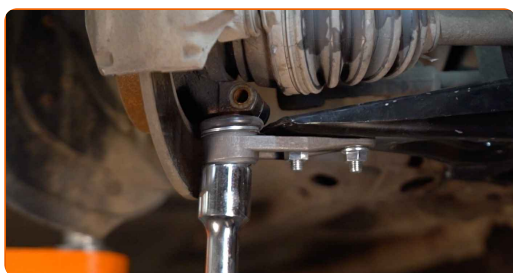
- 21 Screw the front arm fastener. Use a combination spanner #18. Use a drive socket #18. Use a tap wrench.



- 22 Connect the lower arm to the steering knuckle.



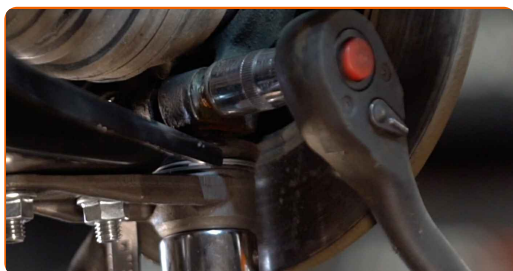
- 23 Support the arm. Use a hydraulic transmission jack.



**24** Install the fastening bolt. Use a rubber mallet.



**25** Screw the fasteners of the ball joint. Use a drive socket #16. Use a combination spanner #16.



**26** Screw the rear fastener connecting the control arm to the subframe. Use a combination spanner #19. Use a drive socket #19. Use a tap wrench.



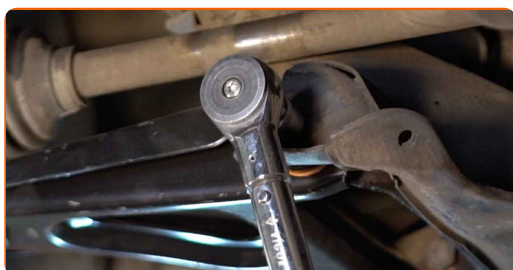
**27** Screw the front arm fastener. Use a combination spanner #18. Use a drive socket #18. Use a tap wrench.



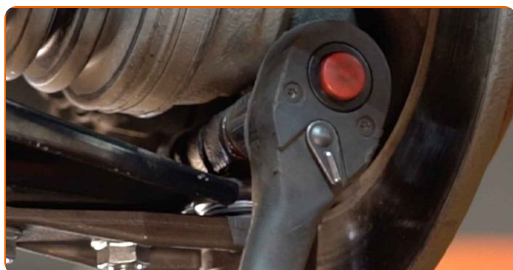
- 28** Tighten the rear fastener of the control arm. Use a drive socket #19. Use a torque wrench. Tighten it to 115 nm torque.



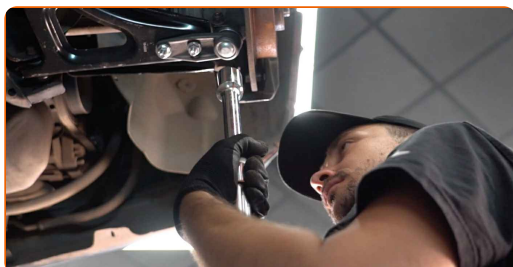
- 29** Tighten the front fastener connecting the control arm to the subframe. Use a combination spanner #18. Use a drive socket #18. Use a torque wrench. Tighten it to 115 Nm torque.



- 30** Tighten the ball joint fastener. Use a combination spanner #16. Use a drive socket #16. Use a torque wrench. Tighten it to 62 Nm torque.



- 31** Remove the support from under the arm.

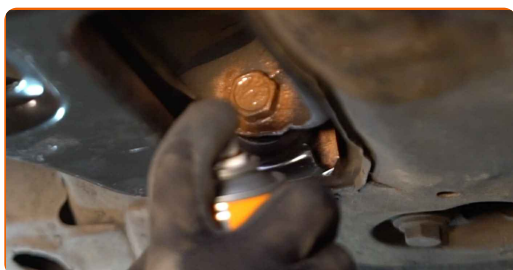


**AUTODOC recommends:**

- Replacement: front lower arm – Renault Twingo C06. Lower the transmission jack smoothly, without jerks, to avoid damaging components and mechanisms.

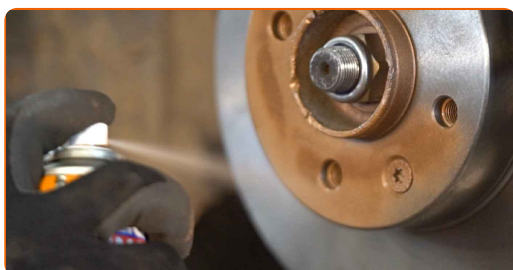
**32**

Treat all joints of the arm. Use copper grease.



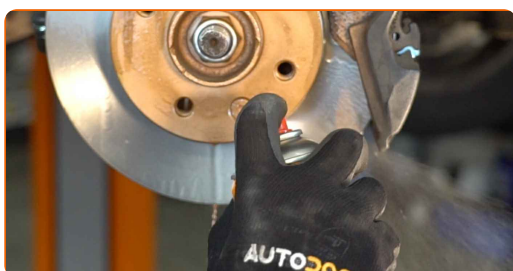
**33**

Treat the surface where the brake disc contacts the wheel rim. Use copper grease.



**34**

Clean the brake disk surface. Use a brake cleaner.



**Replacement: front lower arm – Renault Twingo C06. Tip from AUTODOC:**

- After applying the spray, wait a few minutes.

**35** Install the wheel.

**AUTODOC recommends:**

- To avoid injury, hold up the wheel when screwing in the fastening bolts.

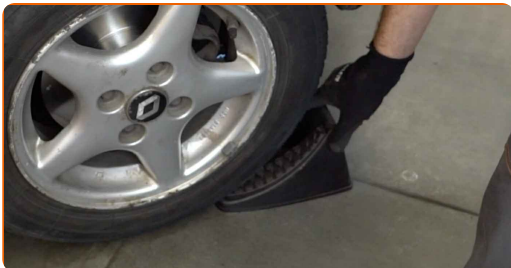
**36** Screw in the wheel bolts. Use wheel impact socket #17.



**37** Lower the car and working in a cross order, tighten the wheel bolts. Use a torque wrench. Tighten it to 90 nm torque.



**38** Remove the jacks and chocks.



**WELL DONE!** 

**VIEW MORE TUTORIALS**

# AUTODOC – TOP QUALITY AND AFFORDABLE CAR PARTS ONLINE

**AUTODOC MOBILE APP: GREAT DEALS AND CONVENIENT SHOPPING**



**+ AUTODOC**

GET IT ON  **Google Play**

 **Download on the App Store**

**Download**

**A GREAT SELECTION OF SPARE PARTS FOR YOUR CAR**

**BUY SPARE PARTS FOR RENAULT**

**CONTROL ARM: A WIDE SELECTION**

**CHOOSE CAR PARTS FOR RENAULT TWINGO C06**

**CONTROL ARM FOR RENAULT: BUY NOW**

**CONTROL ARM FOR RENAULT TWINGO C06: THE BEST  
DEALS & OFFERS**

### **DISCLAIMER:**

The document contains only general recommendations that may be useful for you when you perform repair or replacement work. AUTODOC shall not be liable for any loss, injury, damage of property occurring in the repair or replacement process due to incorrect use or misinterpretation of the provided information.

AUTODOC shall not be liable for any possible mistakes and uncertainties in this guide. The information provided is for information purposes only and cannot replace advice from specialists.

AUTODOC shall not be liable for incorrect or hazardous usage of equipment, tools and car parts. AUTODOC strongly recommends to be careful and observe the safety rules when performing repair or replacement works. Remember: usage of low quality auto parts does not guarantee you the appropriate level of road safety.

© Copyright 2022 – All the contents of this website, in particular texts, photographs and graphics, are protected by copyright. All rights, including reproduction, publication, editing and translation rights, are reserved by AUTODOC GmbH.