



How to change  
serpentine belt on  
**Renault Twingo C06** –  
replacement guide

## VIDEO TUTORIAL

** Important!**

This replacement procedure can be used for:

RENAULT Twingo I Hatchback 1.2, RENAULT Kangoo I (KC) 1.2, RENAULT Clio II Hatchback (BB, CB) 1.2, RENAULT Kangoo I Express (FC) 1.2, RENAULT Twingo I Hatchback 1.2 16V, RENAULT Clio II Hatchback (BB, CB) 1.2 16V, RENAULT Kangoo I (KC) 1.2 16V, RENAULT Kangoo I Express (FC) 1.2 16V, RENAULT Symbol / Thalia I (LB) 1.2 16V

---

The steps may slightly vary depending on the car design.

REPLACEMENT: SERPENTINE BELT – RENAULT  
TWINGO C06. TOOLS YOU NEED:



- Combination spanner #21
- Drive socket # 13
- Drive socket # 16
- Drive socket # 18
- HEX bit no.H7.
- Ratchet wrench
- Crow bar
- Torque wrench
- Fender cover

**BUY TOOLS**

Replacement: serpentine belt – Renault Twingo C06. AUTODOC recommends:

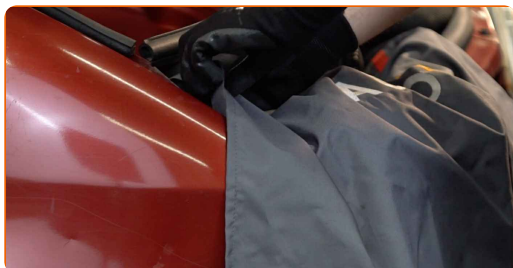
- All work should be done with the engine stopped.

## REPLACEMENT: SERPENTINE BELT – RENAULT TWINGO C06. TAKE THE FOLLOWING STEPS:

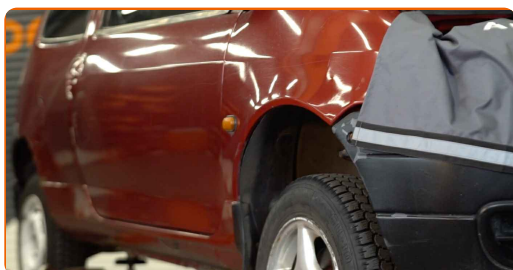
- 1 Open the hood.



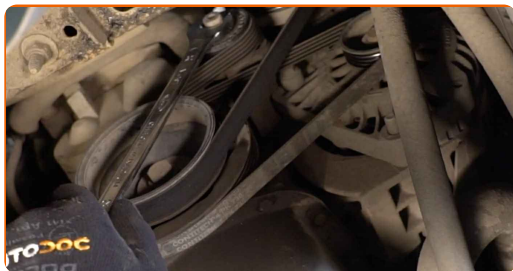
- 2 Use a fender protection cover to prevent damaging paintwork and plastic parts of the car.



- 3 Lift the car using a jack or place it over an inspection pit.

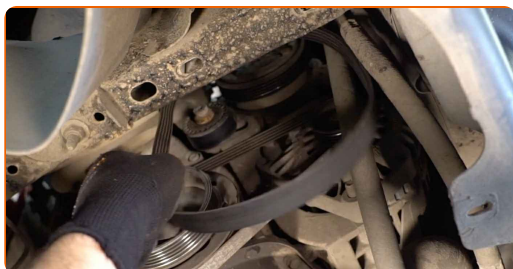


**4** Loosen the fastener of the AC compressor belt tensioner pulley. Use a combination spanner #21. Use HEX No.H7.

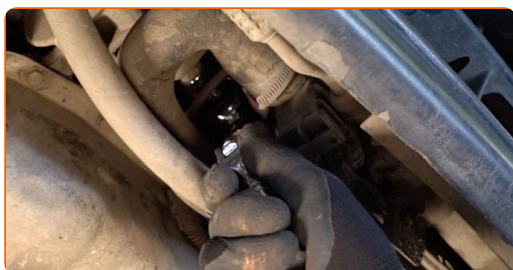


**5** Pull aside the AC compressor belt tensioner pulley.

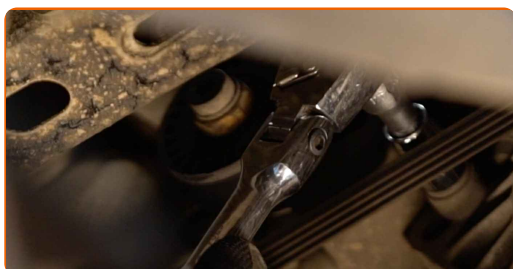
**6** Remove the AC compressor belt.



**7** Loosen the lower fastener of the alternator. Use a drive socket #13. Use a drive socket #16. Use a ratchet wrench.



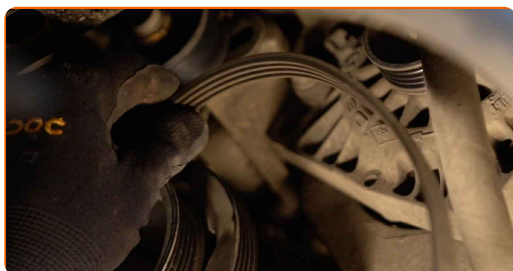
**8** Loosen the upper fastener of the alternator. Use a drive socket #13. Use a drive socket #16. Use a ratchet wrench.



**9** Loosen the serpentine belt.



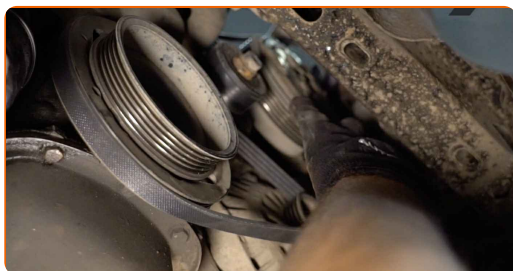
**10** Remove the V-ribbed belt.



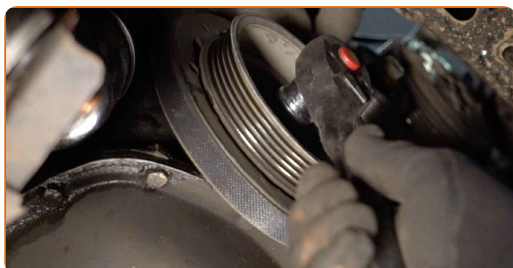
**Replacement: serpentine belt – Renault Twingo C06. Tip:**

- Check the condition of the tensioner pulley and idler pulley. Replace them if necessary.

**11** Install the V-ribbed belt.



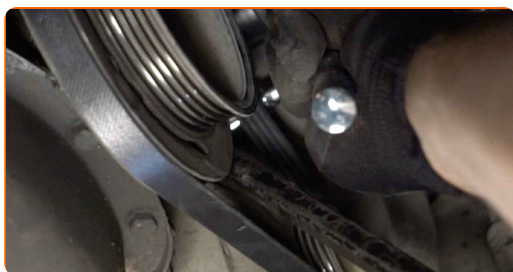
**12** Place the serpentine belt on the crankshaft pulley. Use a drive socket #18. Use a ratchet wrench.



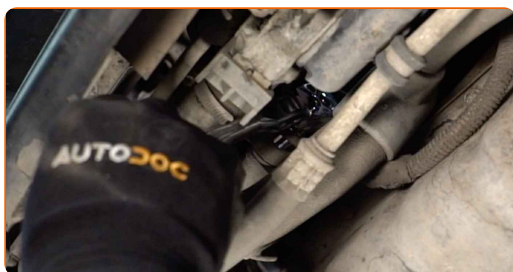
Replacement: serpentine belt – Renault Twingo C06. AUTODOC experts recommend:

- Make sure that the V-ribbed belt fits all pulleys snugly.
- Make sure that the V-ribbed belt is properly tensioned.

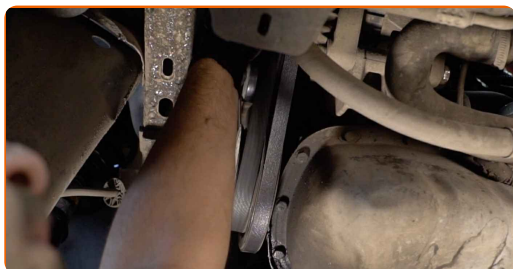
**13** Screw in the upper fastener of the alternator. Use a drive socket #13. Use a drive socket #16. Use a ratchet wrench.



**14** Screw in the lower fastener of the alternator. Use a drive socket #13. Use a drive socket #16. Use a ratchet wrench.



**15** Install the AC compressor belt.

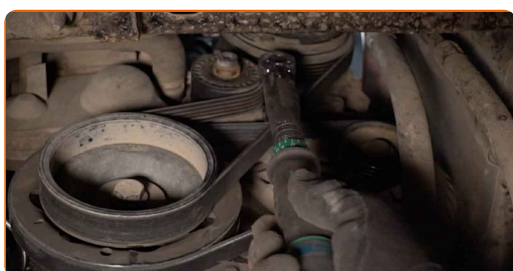




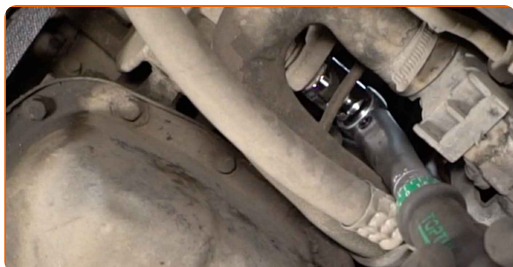
**16** Return the tensioner pulley to its initial position. Use a combination spanner #21.



**17** Screw in the fastener of the AC compressor belt tensioner pulley. Use a combination spanner #21. Use HEX No.H7.



**18** Tighten the upper fastener of the alternator. Use a drive socket #13. Use a torque wrench. Tighten it to 20 Nm torque.



**19** Tighten the lower fastener of the alternator. Use a drive socket #16. Use a torque wrench. Tighten it to 35 Nm torque.

**20** Lower the car.





**21** Run the engine for a few minutes. This is necessary in order to make sure that the component operates properly.



**22** Remove the fender protection cover.



**23** Close the hood.



**WELL DONE!** 

**VIEW MORE TUTORIALS**

# AUTODOC – TOP QUALITY AND AFFORDABLE CAR PARTS ONLINE

**AUTODOC MOBILE APP: GREAT DEALS AND CONVENIENT SHOPPING**



**+ AUTODOC**

GET IT ON  **Google Play**

 **Download on the App Store**

**Download**

**A GREAT SELECTION OF SPARE PARTS FOR YOUR CAR**

**BUY SPARE PARTS FOR RENAULT**

**SERPENTINE BELT: A WIDE SELECTION**

**CHOOSE CAR PARTS FOR RENAULT TWINGO C06**

**SERPENTINE BELT FOR RENAULT: BUY NOW**

**SERPENTINE BELT FOR RENAULT TWINGO C06: THE BEST DEALS & OFFERS**

### **DISCLAIMER:**

The document contains only general recommendations that may be useful for you when you perform repair or replacement work. AUTODOC shall not be liable for any loss, injury, damage of property occurring in the repair or replacement process due to incorrect use or misinterpretation of the provided information.

AUTODOC shall not be liable for any possible mistakes and uncertainties in this guide. The information provided is for information purposes only and cannot replace advice from specialists.

AUTODOC shall not be liable for incorrect or hazardous usage of equipment, tools and car parts. AUTODOC strongly recommends to be careful and observe the safety rules when performing repair or replacement works. Remember: usage of low quality auto parts does not guarantee you the appropriate level of road safety.

© Copyright 2022 – All the contents of this website, in particular texts, photographs and graphics, are protected by copyright. All rights, including reproduction, publication, editing and translation rights, are reserved by AUTODOC GmbH.