



VIDEO TUTORIAL

### Important!

This replacement procedure can be used for:

OPEL AGILA (A) (H00) 1.2 16V (F68), OPEL ASTRA G Estate (T98) 1.2 16V (F35), OPEL ASTRA G Hatchback (T98) 1.2 16V (F08, F48), OPEL ASTRA G Saloon (T98) 1.2 16V (F69), OPEL CORSA C (X01) 1.2 (F08, F68), OPEL CORSA C Box (X01) 1.2 16V (F08, W5L)

---

The steps may slightly vary depending on the car design.

## REQUIRED TOOLS:



- All-purpose cleaning spray
- Drive socket # 36
- Torx bit T55
- Ratchet wrench
- Torque wrench
- Flat Screwdriver
- Oil drain pan
- Funnel
- Fender cover

### AUTODOC recommends:

- Replace the oil filter every time when changing motor oil.
- Wear gloves to prevent contact with hot liquid.
- All work should be done with the engine stopped.

### CARRY OUT REPLACEMENT IN THE FOLLOWING ORDER:

1



Open the hood.

2

Use a fender protection cover to prevent damaging paintwork and plastic parts of the car.

3



Clean the oil filter housing cap. Use all-purpose cleaning spray.

4



Unscrew the filter housing cap together with the old filter element. Use a drive socket #36. Use a ratchet wrench.

5

Prepare a container for the old oil filter.

6



Remove the filter element from the filter housing

7

Put the old oil filter in the container.

### AUTODOC recommends:

- Move up the container. The oil starts to drain out of the drainage hole immediately after you have removed the oil filter.

8



Remove the old seal of the oil filter cap Use a flat screwdriver.

9

Clean the oil filter housing cap. Use all-purpose cleaning spray.

10



Install a new seal of the oil filter cap Use a flat screwdriver.

11

Lubricate the rubber seal of the new filter with a little amount of fresh oil.

12



Insert a new filter element into the filter housing

### Please note!

- Make sure to install the filter correctly. Don't mix up the sides of the part.

13



Screw the cap. Use a drive socket #36. Use a torque wrench. Tighten it to 25 Nm torque.

14



Lift the car using a jack or place it over an inspection pit.

### AUTODOC recommends:

- The vehicle must be on even keel, and if it is at an angle, the drain plug must be at the lowest point.
- All work should be done with the engine stopped.
- Put a waste oil container with at least 4 l capacity under the drainage hole.



15



Clean the area of the oil pan drainage hole. Use all-purpose cleaning spray.

16



Unscrew the drain plug. Use Torx T55. Use a ratchet wrench.

17



Drain the used oil.

**AUTODOC recommends:**

- Caution! The oil may be hot.
- Wait until the oil has completely drained from the drainage hole.

18

Clean the area of the oil pan drainage hole.

19



Screw in the new drainage plug and tighten it. Use Torx T55. Use a torque wrench. Tighten it to 30 Nm torque.

20

Clean the area of the oil pan drainage hole. Use all-purpose cleaning spray.

21



Lower the car.

22



Unscrew the oil filler plug.

23

Remove the oil filler cap.

24



Insert the funnel.

25



Pour oil into the engine through the filler. Required amount of oil: 3.5 l.

### AUTODOC recommends:

- Use the oil recommended by the manufacturer.

26



Check the oil level using the dipstick. Top up oil if necessary.

Please note!

- The oil level should be between the Min and Max marks.

27



Install the oil filler cap.

28

Tighten the oil filler cap.

29

Run the engine for a few minutes. After the oil pressure warning light goes out, stop the engine.

30



Check the oil level 5 minutes after the stop of the engine operation using a dipstick and add oil if necessary.

### Please note!

- The oil level should be between the Min and Max marks.
- Make sure that the oil filler cap is properly tightened.
- Check the threaded plug of the drainage hole and the oil filter seal for tightness. If necessary, carefully tighten them up.

31

Remove the fender protection cover.

32



Close the hood.

### AUTODOC recommends:

- Note that oil pressure warning light, which indicates insufficient pressure in the lubrication system, may be on for a longer time than usual. After a few seconds, the oil will fill all the channels, and the light will go out.
- To protect the environment from pollution, be sure to dispose of the used filters at special collection points.



**DID YOU FIND THESE INSTRUCTIONS  
HELPFUL?**

**YES**

**NO**



**BECOME A MEMBER OF AUTODOC CLUB!**

# AUTODOC — TOP QUALITY AND AFFORDABLE CAR PARTS ONLINE

AUTODOC MOBILE APP: GREAT DEALS AND CONVENIENT SHOPPING

**AUTODOC**  
APP

**Download**

Google play

App Store

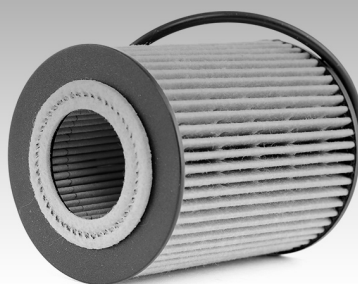
A GREAT SELECTION OF SPARE PARTS FOR YOUR CAR



BUY SPARE PARTS FOR OPEL



OIL FILTERS: A WIDE SELECTION



CHOOSE CAR PARTS FOR OPEL CORSA C



OIL FILTERS FOR OPEL: BUY NOW



OIL FILTERS FOR OPEL CORSA C: THE BEST DEALS & OFFERS



**i Disclaimer:**

The document contains only general recommendations that may be useful for you when you perform repair or replacement work. AutoDoc shall not be liable for any loss, injury, damage of property occurring in the repair or replacement process due to incorrect use or misinterpretation of the provided information.

AutoDoc shall not be liable for any possible mistakes and uncertainties in this guide. The information provided is for information purposes only and cannot replace advice from specialists.

AutoDoc shall not be liable for incorrect or hazardous usage of equipment, tools and car parts. AutoDoc strongly recommends to be careful and observe the safety rules when performing repair or replacement works. Remember: usage of low quality auto parts does not guarantee you the appropriate level of road safety.

© Copyright 2018 – All the contents of this website, in particular texts, photographs and graphics, are protected by copyright. All rights, including reproduction, publication, editing and translation rights, are reserved by Autodoc GmbH.